



# Chr-A Polyclonal Antibody

Catalog No	BYab-15888
Isotype	IgG
Reactivity	Human;Mouse;Rat
Applications	WB;IHC;IF;ELISA
Gene Name	CHGA
Protein Name	Chromogranin-A
Immunogen	The antiserum was produced against synthesized peptide derived from human Chr-A. AA range:311-360
Specificity	Chr-A Polyclonal Antibody detects endogenous levels of Chr-A protein.
Formulation	Liquid in PBS containing 50% glycerol, 0.5% BSA and 0.02% sodium azide.
Source	Polyclonal, Rabbit,IgG
Purification	The antibody was affinity-purified from rabbit antiserum by affinity-chromatography using epitope-specific immunogen.
Dilution	WB: 1/500 - 1/2000. IHC: 1/100 - 1/300. ELISA: 1/10000.. IF 1:50-200
Concentration	1 mg/ml
Purity	≥90%
Storage Stability	-20°C/1 year
Synonyms	CHGA; Chromogranin-A; CgA; Pituitary secretory protein I; SP-I
Observed Band	68kD
Cell Pathway	[Serpinin]: Secreted . Cytoplasmic vesicle, secretory vesicle . Pyroglutaminated serpinin localizes to secretory vesicle. .; Cytoplasmic vesicle, secretory vesicle . Cytoplasmic vesicle, secretory vesicle, neuronal dense core vesicle . Secreted . Associated with the secretory granule membrane through direct interaction to SCG3 that in turn binds to cholesterol-enriched lipid rafts in intragranular conditions. In pituitary gonadotropes, located in large secretory granules. .
Tissue Specificity	GE-25 is found in the brain.
Function	function:Pancreastatin strongly inhibits glucose induced insulin release from the pancreas.,miscellaneous:Binds calcium with a low-affinity.,PTM:Sulfated on tyrosine residues and/or contains sulfated glycans.,similarity:Belongs to the chromogranin/secretogranin protein family.,subcellular location:Neuroendocrine and endocrine secretory granules.,

Nanjing BYabscience technology Co.,Ltd

**Background**

The protein encoded by this gene is a member of the chromogranin/secretogranin family of neuroendocrine secretory proteins. It is found in secretory vesicles of neurons and endocrine cells. This gene product is a precursor to three biologically active peptides; vasostatin, pancreastatin, and parastatin. These peptides act as autocrine or paracrine negative modulators of the neuroendocrine system. Two other peptides, catestatin and chromofungin, have antimicrobial activity and antifungal activity, respectively. Two transcript variants encoding different isoforms have been found for this gene. [provided by RefSeq, Sep 2014],

**matters needing attention**

Avoid repeated freezing and thawing!

**Usage suggestions**

This product can be used in immunological reaction related experiments. For more information, please consult technical personnel.

Nanjing BYabscience technology Co.,Ltd

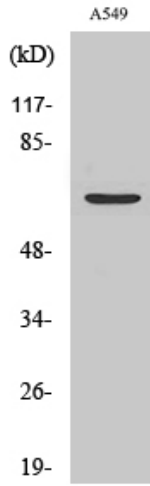
网址: [www.njbybio.com](http://www.njbybio.com)

官方热线: 025-5229-8998

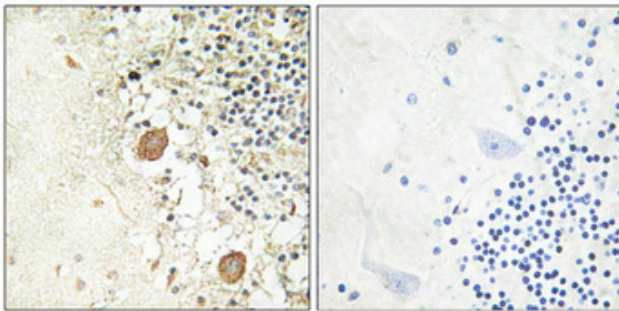
监督电话: 15950492658



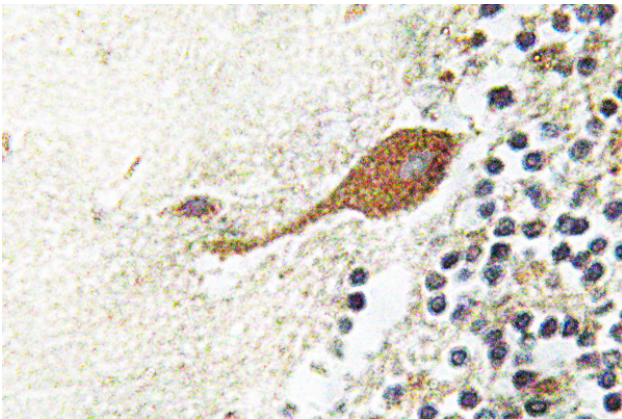
## Products Images



Western Blot analysis of various cells using Chr-A Polyclonal Antibody



Immunohistochemical analysis of paraffin-embedded Human brain. Antibody was diluted at 1:100(4° overnight). High-pressure and temperature Tris-EDTA,pH8.0 was used for antigen retrieval. Negative contrl (right) obtained from antibody was pre-absorbed by immunogen peptide.



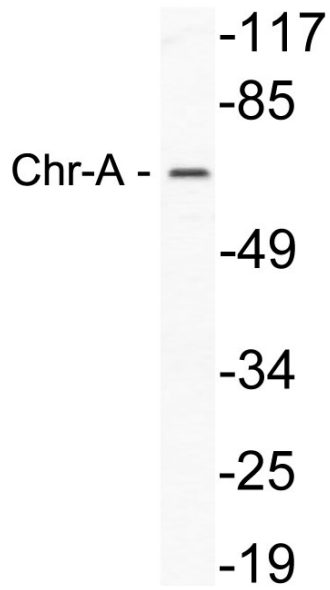
Immunohistochemistry analysis of Chr-A antibody in paraffin-embedded human brain tissue.

**Nanjing BYabscience technology Co.,Ltd**

网址: [www.njbybio.com](http://www.njbybio.com)

官方热线: 025-5229-8998

监督电话: 15950492658



Western blot analysis of lysate from A549 cells, using Chr-A antibody.