



BMP-5 Polyclonal Antibody

Catalog No	BYab-15879
Isotype	IgG
Reactivity	Human;Mouse
Applications	WB;IHC;IF;ELISA
Gene Name	BMP5
Protein Name	Bone morphogenetic protein 5
Immunogen	The antiserum was produced against synthesized peptide derived from human BMP-5. AA range:114-163
Specificity	BMP-5 Polyclonal Antibody detects endogenous levels of BMP-5 protein.
Formulation	Liquid in PBS containing 50% glycerol, 0.5% BSA and 0.02% sodium azide.
Source	Polyclonal, Rabbit,IgG
Purification	The antibody was affinity-purified from rabbit antiserum by affinity-chromatography using epitope-specific immunogen.
Dilution	WB: 1/500 - 1/2000. IHC: 1/100 - 1/300. ELISA: 1/40000.. IF 1:50-200
Concentration	1 mg/ml
Purity	≥90%
Storage Stability	-20°C/1 year
Synonyms	BMP5; Bone morphogenetic protein 5; BMP-5
Observed Band	52kD
Cell Pathway	Secreted.
Tissue Specificity	Expressed in the lung and liver.
Function	function:Induces cartilage and bone formation.,online information:Bone morphogenetic protein 5 entry,similarity:Belongs to the TGF-beta family.,subunit:Homodimer; disulfide-linked.,tissue specificity:Expressed in the lung and liver.,
Background	This gene encodes a secreted ligand of the TGF-beta (transforming growth factor-beta) superfamily of proteins. Ligands of this family bind various TGF-beta receptors leading to recruitment and activation of SMAD family transcription factors that regulate gene expression. The encoded preproprotein is proteolytically processed to generate each subunit of the disulfide-linked homodimer, which plays a role in bone and cartilage development.

Nanjing BYabs science technology Co.,Ltd



Polymorphisms in this gene may be associated with osteoarthritis in human patients. This gene is differentially regulated in multiple human cancers. This gene encodes distinct protein isoforms that may be similarly proteolytically processed. [provided by RefSeq, Jul 2016],

matters needing attention

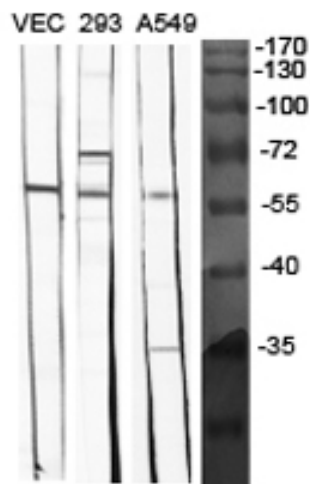
Avoid repeated freezing and thawing!

Usage suggestions

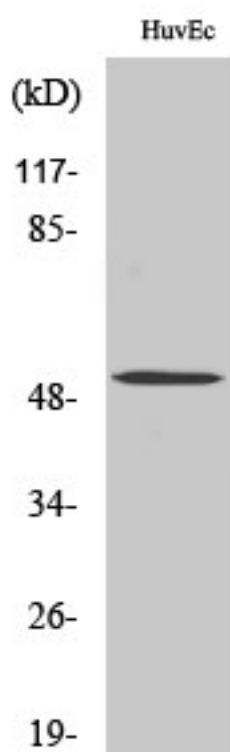
This product can be used in immunological reaction related experiments. For more information, please consult technical personnel.



Products Images



Western Blot analysis of various cells using BMP-5 Polyclonal Antibody diluted at 1:1000



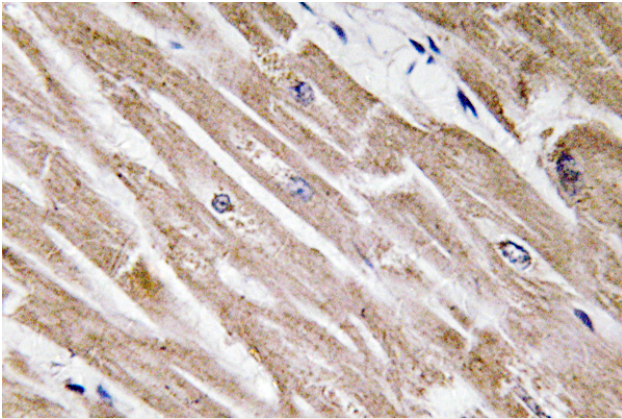
Western Blot analysis of HeLa cells using BMP-5 Polyclonal Antibody diluted at 1:1000

Nanjing BYabs science technology Co.,Ltd

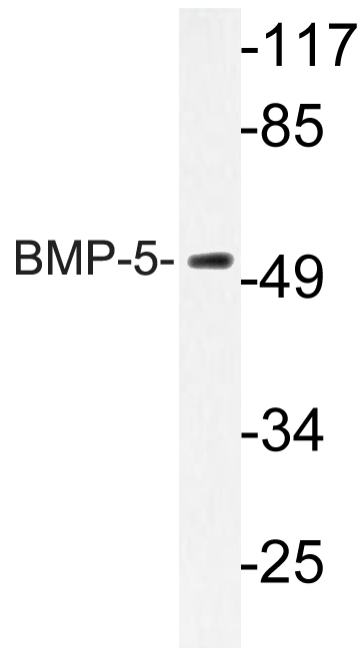
网址: www.njbybio.com

官方热线: 025-5229-8998

监督电话: 15950492658



Immunohistochemistry analysis of BMP-5 antibody in paraffin-embedded human heart tissue.



Western blot analysis of lysate from HUVEC cells, using BMP-5 antibody.