



Six5 Polyclonal Antibody

Catalog No	BYab-15804
Isotype	IgG
Reactivity	Human;Mouse
Applications	WB;IHC
Gene Name	SIX5
Protein Name	Homeobox protein SIX5
Immunogen	The antiserum was produced against synthesized peptide derived from human SIX5. AA range:201-250
Specificity	Six5 Polyclonal Antibody detects endogenous levels of Six5 protein.
Formulation	Liquid in PBS containing 50% glycerol, 0.5% BSA and 0.02% sodium azide.
Source	Polyclonal, Rabbit,IgG
Purification	The antibody was affinity-purified from rabbit antiserum by affinity-chromatography using epitope-specific immunogen.
Dilution	WB 1:500-2000;IHC-p 1:50-300
Concentration	1 mg/ml
Purity	≥90%
Storage Stability	-20°C/1 year
Synonyms	SIX5; DMAHP; Homeobox protein SIX5; DM locus-associated homeodomain protein; Sine oculis homeobox homolog 5
Observed Band	75kD
Cell Pathway	Cytoplasm . Nucleus .
Tissue Specificity	Expressed in adult but not in fetal eyes. Found in corneal epithelium and endothelium, lens epithelium, ciliary body epithelia, cellular layers of the retina and the sclera.
Function	caution:The region from 1 to 184 was deduced from the genomic sequence and ESTs.,developmental stage:At the begin of fourth week of development detected in cytoplasm of somite cells, and at the end of fourth week is accumulated in the nucleus. Between the sixth and eighth week of development detected in the nucleus of limb bud cells.,disease:Defects in SIX5 are the cause of branchiootorenal syndrome type 2 (BOR2) [MIM:610896]. BOR is an autosomal dominant disorder manifested by various combinations of preauricular pits, branchial fistulae or cysts, lacrimal duct stenosis, hearing loss, structural defects of the outer, middle, or inner ear, and renal dysplasia. Associated defects include

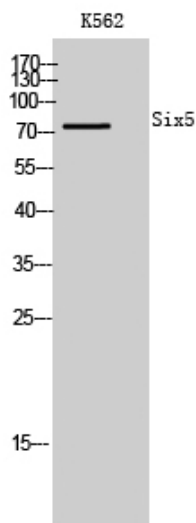
Nanjing BYabscience technology Co.,Ltd



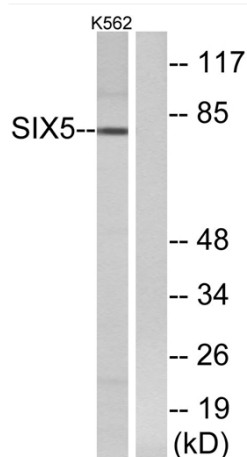
	asthenic habitus, long narrow facies, constricted palate, deep overbite, and myopia. Hearing loss may be due to mondini type cochlear defect and stapes fixation. Penetrance of BOR syndrome is high, althou
Background	The protein encoded by this gene is a homeodomain-containing transcription factor that appears to function in the regulation of organogenesis. This gene is located downstream of the dystrophia myotonica-protein kinase gene. Mutations in this gene are a cause of branchiootorenal syndrome type 2. [provided by RefSeq, Jul 2009],
matters needing attention	Avoid repeated freezing and thawing!
Usage suggestions	This product can be used in immunological reaction related experiments. For more information, please consult technical personnel.



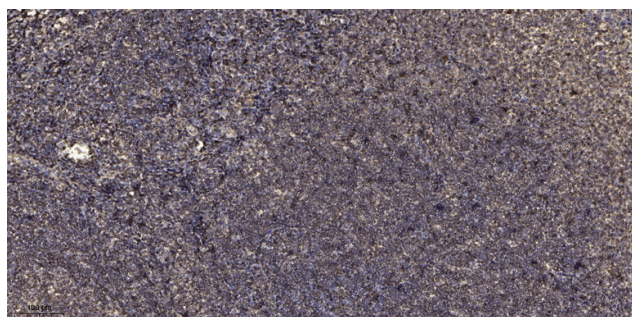
Products Images



Western Blot analysis of K562 cells using Six5 Polyclonal Antibody



Western blot analysis of lysates from K562 cells, using SIX5 Antibody. The lane on the right is blocked with the synthesized peptide.



Immunohistochemical analysis of paraffin-embedded human tonsil. 1, Antibody was diluted at 1:200(4° overnight). 2, Tris-EDTA,pH9.0 was used for antigen retrieval. 3,Secondary antibody was diluted at 1:200(room temperature, 45min).

Nanjing BYabs science technology Co.,Ltd

网址: www.njbybio.com

官方热线: 025-5229-8998

监督电话: 15950492658