



PDX-1 Polyclonal Antibody

Catalog No	BYab-15797
Isotype	IgG
Reactivity	Human;Mouse;Rat
Applications	WB;IHC
Gene Name	PDX1
Protein Name	Pancreas/duodenum homeobox protein 1
Immunogen	The antiserum was produced against synthesized peptide derived from human PDX1. AA range:27-76
Specificity	PDX-1 Polyclonal Antibody detects endogenous levels of PDX-1 protein.
Formulation	Liquid in PBS containing 50% glycerol, 0.5% BSA and 0.02% sodium azide.
Source	Polyclonal, Rabbit,IgG
Purification	The antibody was affinity-purified from rabbit antiserum by affinity-chromatography using epitope-specific immunogen.
Dilution	WB 1:500-2000;IHC-p 1:50-300
Concentration	1 mg/ml
Purity	≥90%
Storage Stability	-20°C/1 year
Synonyms	PDX1; IPF1; Pancreas/duodenum homeobox protein 1; PDX-1; Glucose-sensitive factor; GSF; Insulin promoter factor 1; IPF-1; Insulin upstream factor 1; IUF-1; Islet/duodenum homeobox-1; IDX-1; Somatostatin-transactivating factor 1; STF-1
Observed Band	42kD
Cell Pathway	Nucleus. Cytoplasm, cytosol .
Tissue Specificity	Duodenum and pancreas (Langerhans islet beta cells and small subsets of endocrine non-beta-cells, at low levels in acinar cells).
Function	disease:Defects in PDX1 are a cause of pancreatic agenesis [MIM:260370]. This autosomal recessive disorder is characterized by absence or hypoplasia of pancreas, leading to early-onset insulin-dependent diabetes mellitus. This was found in a frameshift mutation that produces a truncated protein and results in a second initiation that produces a second protein that act as a dominant negative mutant.,disease:Defects in PDX1 are the cause of maturity onset diabetes noninsulin-dependent diabetes mellitus (NIDDM) [MIM:125853]; also known as diabetes mellitus type II.,disease:Defects in PDX1 are the cause of maturity onset diabetes of the young type 4 (MODY4) [MIM:606392]; also symbolized MODY-4.

Nanjing BYabscience technology Co.,Ltd



	MODY [MIM:606391] is a form of diabetes mellitus characterized by an autosomal dominant mode of inheritance, age of onset of 25 years or younger and a primary defect in insulin secretion.,domain:The A
Background	The protein encoded by this gene is a transcriptional activator of several genes, including insulin, somatostatin, glucokinase, islet amyloid polypeptide, and glucose transporter type 2. The encoded nuclear protein is involved in the early development of the pancreas and plays a major role in glucose-dependent regulation of insulin gene expression. Defects in this gene are a cause of pancreatic agenesis, which can lead to early-onset insulin-dependent diabetes mellitus (NIDDM), as well as maturity onset diabetes of the young type 4 (MODY4). [provided by RefSeq, Jul 2008],
matters needing attention	Avoid repeated freezing and thawing!
Usage suggestions	This product can be used in immunological reaction related experiments. For more information, please consult technical personnel.

Nanjing BYabscience technology Co.,Ltd

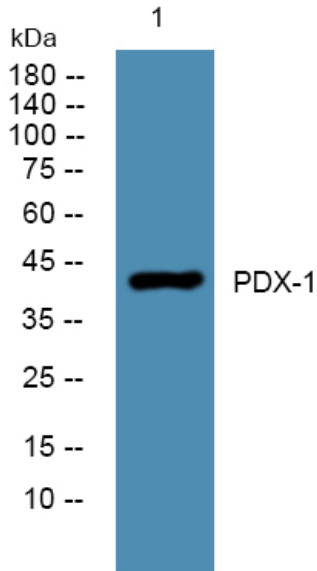
网址: www.njbybio.com

官方热线: 025-5229-8998

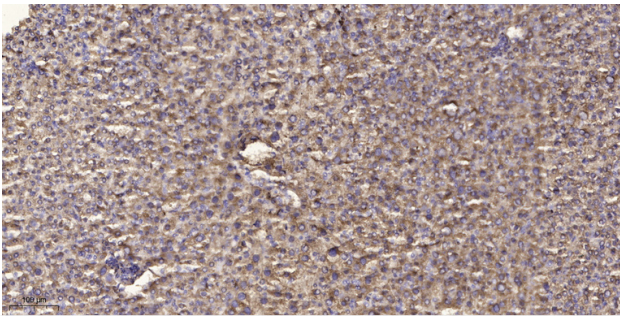
监督电话: 15950492658



Products Images



Western blot analysis of lysates from PC12 cells,
primary antibody was diluted at 1:1000, 4° over night



Immunohistochemical analysis of paraffin-embedded
human liver cancer. 1, Antibody was diluted at 1:200(4°
overnight). 2, Tris-EDTA, pH9.0 was used for antigen
retrieval. 3, Secondary antibody was diluted at
1:200(room temperature, 45min).