



Pax-9 Polyclonal Antibody

Catalog No	BYab-15795
Isotype	IgG
Reactivity	Human;Mouse;Rat
Applications	WB;ELISA
Gene Name	PAX9
Protein Name	Paired box protein Pax-9
Immunogen	The antiserum was produced against synthesized peptide derived from human Pax-9. AA range:158-207
Specificity	Pax-9 Polyclonal Antibody detects endogenous levels of Pax-9 protein.
Formulation	Liquid in PBS containing 50% glycerol, 0.5% BSA and 0.02% sodium azide.
Source	Polyclonal, Rabbit,IgG
Purification	The antibody was affinity-purified from rabbit antiserum by affinity-chromatography using epitope-specific immunogen.
Dilution	Western Blot: 1/500 - 1/2000. ELISA: 1/20000. Not yet tested in other applications.
Concentration	1 mg/ml
Purity	≥90%
Storage Stability	-20°C/1 year
Synonyms	PAX9; Paired box protein Pax-9
Observed Band	35kD
Cell Pathway	Nucleus.
Tissue Specificity	Lung,Oesophagus,
Function	disease:Defects in PAX9 are a cause of oligodontia [MIM:604625]. It is a form of familial or selective tooth agenesis. Oligodontia is defined as the agenesis of 6 or more permanent teeth without associated systemic disorders. Agenesis of one or more teeth constitutes one of the most common developmental anomalies in man. Reported incidences vary from 1.6% to 9.6%, excluding third molar (Wisdom tooth) agenesis, which occurs in 20% of the population.,function:Transcription factor required for normal development of thymus, parathyroid glands, ultimobranchial bodies, teeth, skeletal elements of skull and larynx as well as distal limbs.,similarity:Contains 1 paired domain.,subunit:Interacts with KDM5B.,

Nanjing BYabscience technology Co.,Ltd

网址: www.njbybio.com

官方热线: 025-5229-8998

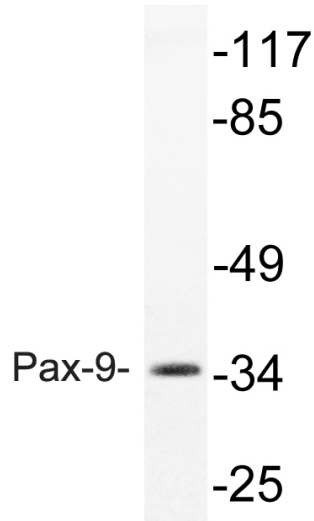
监督电话: 15950492658



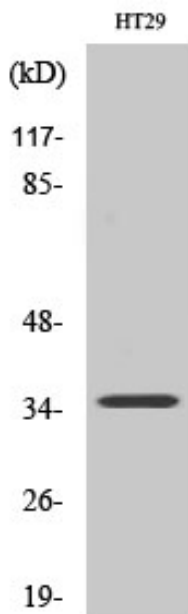
Background	This gene is a member of the paired box (PAX) family of transcription factors. Members of this gene family typically contain a paired box domain, an octapeptide, and a paired-type homeodomain. These genes play critical roles during fetal development and cancer growth. Mice lacking this gene exhibit impaired development of organs, musculature and the skeleton, including absent and abnormally developed teeth, and neonatal lethality. Mutations in the human gene are associated with selective tooth agenesis-3. [provided by RefSeq, Sep 2015],
matters needing attention	Avoid repeated freezing and thawing!
Usage suggestions	This product can be used in immunological reaction related experiments. For more information, please consult technical personnel.



Products Images



Western Blot analysis of various cells using Pax-9 Polyclonal Antibody cells nucleus extracted by Minute TM Cytoplasmic and Nuclear Fractionation kit (SC-003, Invent biotech, MN, USA).



Western blot analysis of lysate from rat heart, using Pax-9 antibody.