



# BOB.1 rabbit mAb(ABT103R)

|                           |  |
|---------------------------|--|
| <b>Catalog No</b>         | BYab-15497   |
| <b>Isotype</b>            | IgG  |
| <b>Reactivity</b>         | Human  |
| <b>Applications</b>       | IHC;IF   |
| <b>Gene Name</b>          | POU2AF1 OBF1   |
| <b>Protein Name</b>       | BOB.1  |
| <b>Immunogen</b>          | Synthesized peptide derived from human BOB.1   |
| <b>Specificity</b>        | This antibody detects endogenous levels of BOB.1 at Human  |
| <b>Formulation</b>        | Liquid in PBS containing 50% glycerol, 0.5% BSA and 0.02% sodium azide.  |
| <b>Source</b>             | Polyclonal, Rabbit,IgG   |
| <b>Purification</b>       | The antibody was affinity-purified from Cell supernatant by affinity-chromatography using specific immunogen.  |
| <b>Dilution</b>           | IHC-p 1:20. IF 1:50-200  |
| <b>Concentration</b>      | 1 mg/ml  |
| <b>Purity</b>             | ≥90%   |
| <b>Storage Stability</b>  | -20°C/1 year   |
| <b>Synonyms</b>           | POU domain class 2-associating factor 1 (B-cell-specific coactivator OBF-1;BOB-1;OCA-B;OCT-binding factor 1)   |
| <b>Observed Band</b>      |  |
| <b>Cell Pathway</b>       | Nucleus .  |
| <b>Tissue Specificity</b> | B-cell specific (PubMed:7779176, PubMed:7859290). Detected in mainly in spleen, but also in thymus, peripheral blood leukocyte and small intestine (PubMed:7779176, PubMed:7859290).   |
| <b>Function</b>           | disease:A chromosomal aberration involving POU2AF1/OBF1 may be a cause of a form of B-cell leukemia. Translocation t(3;11)(q27;q23) with BCL6.,function:Transcriptional coactivator that specifically associates with either OCT1 or OCT2. It boosts the OCT1 mediated promoter activity and to a lesser extent, that of OCT2. It has no intrinsic DNA-binding activity. It recognizes the POU domains of OCT1 and OCT2. It is essential for the response of B-cells to antigens and required for the formation of germinal centers.,PTM:Ubiquitinated; mediated by SIAH1 or SIAH2 and leading to its subsequent proteasomal degradation.,similarity:Belongs to the POU2AF1 family.,tissue specificity:B-cell specific., |

Nanjing BYabscience technology Co.,Ltd



## Background

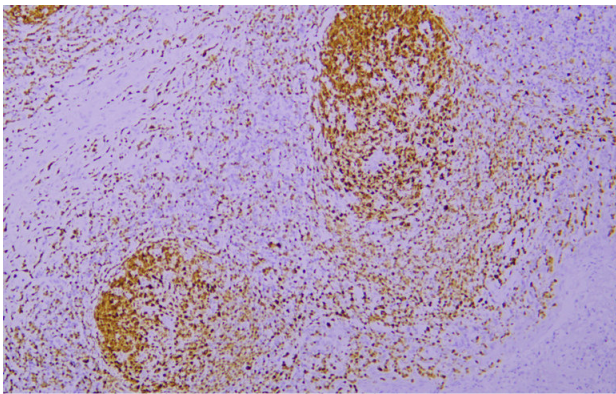
### matters needing attention

Avoid repeated freezing and thawing!

### Usage suggestions

This product can be used in immunological reaction related experiments. For more information, please consult technical personnel.

## Products Images



Immunohistochemical analysis of paraffin-embedded human Tonsil. 1, Antibody was incubated at 4° overnight. 2, Citrate buffer of pH6.0 was used for antigen retrieval. 3, Secondary antibody was diluted at 1:200(room temperature, 30min).