



Thyroglobulin mouse mAb(PT0653)

Catalog No	BYab-15088
Isotype	IgG
Reactivity	Human
Applications	IHC;IF
Gene Name	TG
Protein Name	Thyroglobulin
Immunogen	Synthesized peptide derived from human Thyroglobulin
Specificity	This antibody detects endogenous levels of Thyroglobulin at Human
Formulation	Liquid in PBS containing 50% glycerol, 0.5% BSA and 0.25% sodium azide.
Source	Mouse, Monoclonal
Purification	The antibody was affinity-purified from mouse ascites by affinity-chromatography using specific immunogen.
Dilution	IHC-p 1:100-500, IF 1:100-500
Concentration	1 mg/ml
Purity	≥90%
Storage Stability	-20°C/1 year
Synonyms	Thyroglobulin (Tg)
Observed Band	
Cell Pathway	Secreted . Secreted into the thyroid follicle lumen (PubMed:19509106). Localizes to colloid globules, a structure formed in the thyroid follicle lumen consisting of cross-linked TG arranged in concentric layers (PubMed:8626858, PubMed:11082042). .
Tissue Specificity	Specifically expressed in the thyroid gland.
Function	disease:Defects in TG are a cause of some forms of goiter [MIM:188450]. Goiter is an enlargement of the thyroid gland. This is sometimes linked to hypothyroidism.,disease:Variations in TG are associated with susceptibility to autoimmune thyroid disease type 3 (AITD3) [MIM:608175]. AITDs including Graves disease (GD) and Hashimoto thyroiditis (HT), are among the most common human autoimmune diseases. They are complex diseases, which are caused by an interaction between susceptibility genes and nongenetic factors, such as infection.,function:Precursor of the iodinated thyroid hormones thyroxine (T4) and triiodothyronine (T3).,online information:Thyroglobulin entry,PTM:Sulfated.,similarity:Belongs to the type-B carboxylesterase/lipase

Nanjing BYabscience technology Co.,Ltd



family.,similarity:Contains 11 thyroglobulin type-1 domains.,subunit:Homodimer.,tissue specificity:Thyroid gland specific.,

Background

Thyroglobulin (Tg) is a glycoprotein homodimer produced predominantly by the thyroid gland. It acts as a substrate for the synthesis of thyroxine and triiodothyronine as well as the storage of the inactive forms of thyroid hormone and iodine. Thyroglobulin is secreted from the endoplasmic reticulum to its site of iodination, and subsequent thyroxine biosynthesis, in the follicular lumen. Mutations in this gene cause thyroid dysmorphogenesis, manifested as goiter, and are associated with moderate to severe congenital hypothyroidism. Polymorphisms in this gene are associated with susceptibility to autoimmune thyroid diseases (AITD) such as Graves disease and Hashimoto thyroiditis. [provided by RefSeq, Nov 2009],

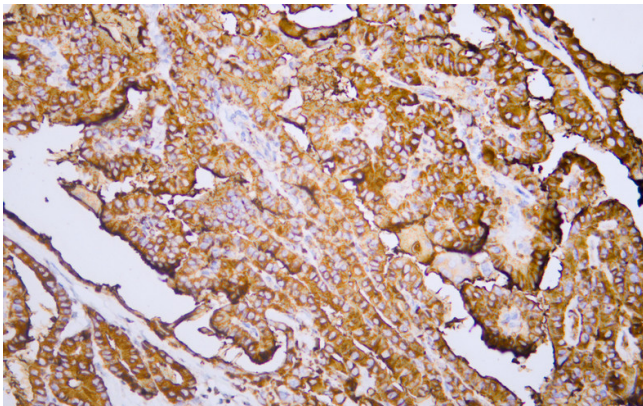
matters needing attention

Avoid repeated freezing and thawing!

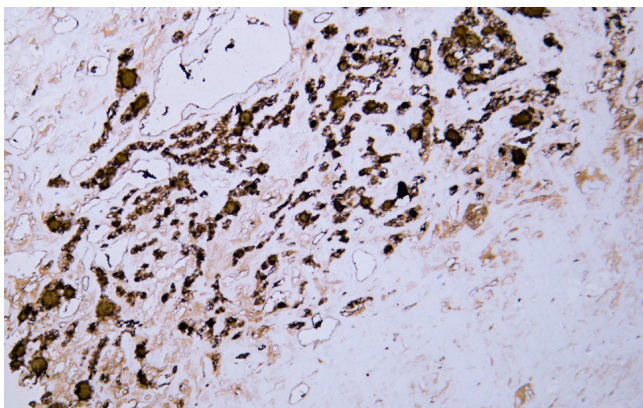
Usage suggestions

This product can be used in immunological reaction related experiments. For more information, please consult technical personnel.

Products Images



Human thyroid carcinoma tissue was stained with Anti-Thyroglobulin (ABT095) Antibody



Human thyroid follicular carcinoma tissue was stained with Anti-Thyroglobulin (ABT095) Antibody

Nanjing BYabscience technology Co.,Ltd