



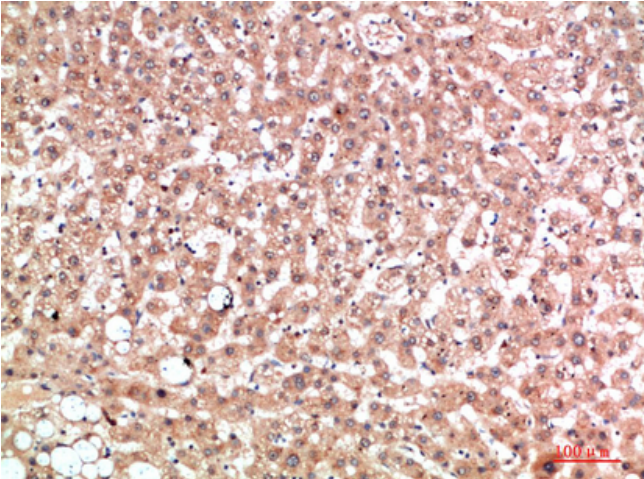
EPG5 Polyclonal Antibody

Catalog No	BYab-15054
Isotype	IgG
Reactivity	Human;Rat;Mouse;
Applications	WB;IHC;IF
Gene Name	EPG5 KIAA1632
Protein Name	Ectopic P granules protein 5 homolog
Immunogen	Synthetic peptide from human protein at AA range: 141-190
Specificity	The antibody detects endogenous EPG5
Formulation	Liquid in PBS containing 50% glycerol, 0.5% BSA and 0.02% sodium azide.
Source	Polyclonal, Rabbit,IgG
Purification	The antibody was affinity-purified from rabbit antiserum by affinity-chromatography using epitope-specific immunogen.
Dilution	WB: 1:1000-2000 IHC: 1:200-500. IF 1:50-200
Concentration	1 mg/ml
Purity	≥90%
Storage Stability	-20°C/1 year
Synonyms	Ectopic P granules protein 5 homolog
Observed Band	
Cell Pathway	Cytoplasm, perinuclear region . Lysosome .
Tissue Specificity	Brain,Cervix,Lymph node,Placenta,
Function	sequence caution:Translated as Trp.,similarity:Belongs to the UPF0493 family.,
Background	This gene encodes a large coiled coil domain-containing protein that functions in autophagy during starvation conditions. Mutations in this gene cause Vici syndrome. [provided by RefSeq, Aug 2015],
matters needing attention	Avoid repeated freezing and thawing!
Usage suggestions	This product can be used in immunological reaction related experiments. For more information, please consult technical personnel.

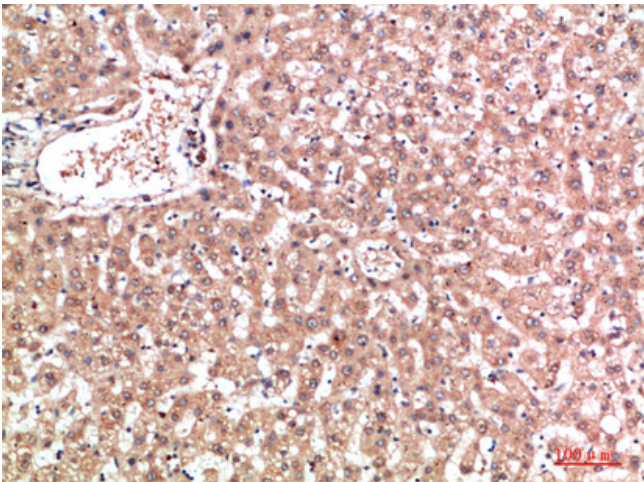
Nanjing BYabscience technology Co.,Ltd



Products Images



Immunohistochemical analysis of paraffin-embedded human-liver, antibody was diluted at 1:200



Immunohistochemical analysis of paraffin-embedded human-liver, antibody was diluted at 1:200