



SLK Polyclonal Antibody

Catalog No	BYab-14996
Isotype	IgG
Reactivity	Human;Mouse;Rat
Applications	WB;IHC;IF;ELISA
Gene Name	SLK
Protein Name	STE20-like serine/threonine-protein kinase
Immunogen	The antiserum was produced against synthesized peptide derived from human SLK. AA range:1151-1200
Specificity	SLK Polyclonal Antibody detects endogenous levels of SLK protein.
Formulation	Liquid in PBS containing 50% glycerol, 0.5% BSA and 0.02% sodium azide.
Source	Polyclonal, Rabbit,IgG
Purification	The antibody was affinity-purified from rabbit antiserum by affinity-chromatography using epitope-specific immunogen.
Dilution	Western Blot: 1/500 - 1/2000. Immunohistochemistry: 1/100 - 1/300. Immunofluorescence: 1/200 - 1/1000. ELISA: 1/5000. Not yet tested in other applications.
Concentration	1 mg/ml
Purity	≥90%
Storage Stability	-20°C/1 year
Synonyms	SLK; KIAA0204; STK2; STE20-like serine/threonine-protein kinase; STE20-like kinase; hSLK; CTCL tumor antigen se20-9; STE20-related serine/threonine-protein kinase; STE20-related kinase; Serine/threonine-protein kinase 2
Observed Band	150kD
Cell Pathway	Cytoplasm .
Tissue Specificity	Ubiquitously expressed. Highest expression is found in heart and in skeletal muscle.
Function	catalytic activity:ATP + a protein = ADP + a phosphoprotein.,function:Mediates apoptosis and actin stress fiber dissolution.,PTM:Autophosphorylated. Phosphorylated upon DNA damage, probably by ATM or ATR.,PTM:Proteolytically cleaved by caspase-3.,sequence caution:Contaminating sequence. Potential poly-A sequence starting in position 422.,sequence caution:Contaminating sequence. Potential poly-A sequence

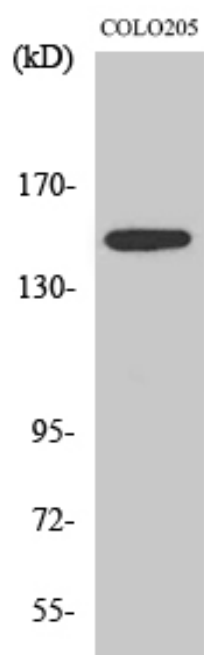
Nanjing BYabs science technology Co.,Ltd



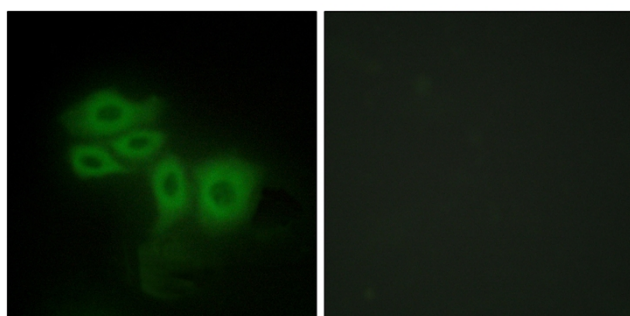
	starting in position 611.,sequence caution:Contaminating sequence. Potential poly-A sequence starting in position 614.,similarity:Belongs to the protein kinase superfamily. STE Ser/Thr protein kinase family. STE20 subfamily.,similarity:Contains 1 protein kinase domain.,similarity:Contains 1 UVR domain.,tissue specificity:Ubiquitously expressed. Highest expression is found in heart and in skeletal muscle.,
Background	catalytic activity:ATP + a protein = ADP + a phosphoprotein.,function:Mediates apoptosis and actin stress fiber dissolution.,PTM:Autophosphorylated. Phosphorylated upon DNA damage, probably by ATM or ATR.,PTM:Proteolytically cleaved by caspase-3.,sequence caution:Contaminating sequence. Potential poly-A sequence starting in position 422.,sequence caution:Contaminating sequence. Potential poly-A sequence starting in position 611.,sequence caution:Contaminating sequence. Potential poly-A sequence starting in position 614.,similarity:Belongs to the protein kinase superfamily. STE Ser/Thr protein kinase family. STE20 subfamily.,similarity:Contains 1 protein kinase domain.,similarity:Contains 1 UVR domain.,tissue specificity:Ubiquitously expressed. Highest expression is found in heart and in skeletal muscle.,
matters needing attention	Avoid repeated freezing and thawing!
Usage suggestions	This product can be used in immunological reaction related experiments. For more information, please consult technical personnel.



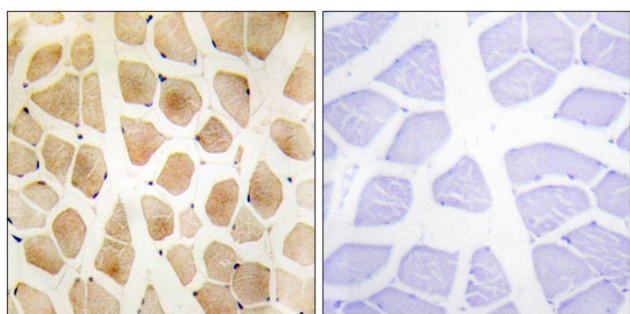
Products Images



Western Blot analysis of various cells using SLK Polyclonal Antibody diluted at 1:1000

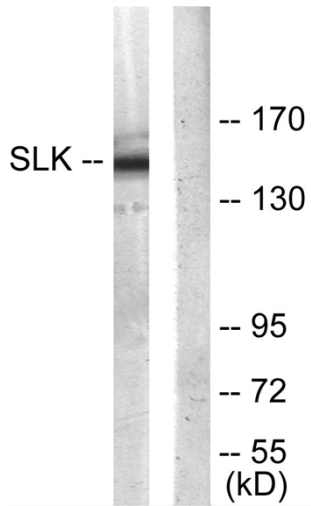


Immunofluorescence analysis of HepG2 cells, using SLK Antibody. The picture on the right is blocked with the synthesized peptide.



Immunohistochemistry analysis of paraffin-embedded human skeletal muscle tissue, using SLK Antibody. The picture on the right is blocked with the synthesized peptide.

Nanjing BYabscience technology Co.,Ltd



Western blot analysis of lysates from COLO205 cells, using SLK Antibody. The lane on the right is blocked with the synthesized peptide.