



PSK-H1 Polyclonal Antibody

Catalog No	BYab-14963
Isotype	IgG
Reactivity	Human;Mouse
Applications	WB;IHC;IF;ELISA
Gene Name	PSKH1
Protein Name	Serine/threonine-protein kinase H1
Immunogen	The antiserum was produced against synthesized peptide derived from human KPSH1. AA range:261-310
Specificity	PSK-H1 Polyclonal Antibody detects endogenous levels of PSK-H1 protein.
Formulation	Liquid in PBS containing 50% glycerol, 0.5% BSA and 0.02% sodium azide.
Source	Polyclonal, Rabbit,IgG
Purification	The antibody was affinity-purified from rabbit antiserum by affinity-chromatography using epitope-specific immunogen.
Dilution	WB: 1/500 - 1/2000. IHC: 1/100 - 1/300. ELISA: 1/20000.. IF 1:50-200
Concentration	1 mg/ml
Purity	≥90%
Storage Stability	-20°C/1 year
Synonyms	PSKH1; Serine/threonine-protein kinase H1; Protein serine kinase H1; PSK-H1
Observed Band	48kD
Cell Pathway	Golgi apparatus. Cytoplasm, cytoskeleton, microtubule organizing center, centrosome. Nucleus speckle. Endoplasmic reticulum membrane; Lipid-anchor. Cell membrane; Lipid-anchor. Cytoplasm. Localized in the brefeldin A-sensitive Golgi compartment, at centrosomes, in the nucleus with a somewhat speckle-like presence, membrane-associated to the endoplasmic reticulum (ER) and the plasma membrane (PM), and more diffusely in the cytoplasm. Found to concentrate in splicing factor compartments (SFCs) within the nucleus of interphase cells. The acylation-negative form may be only cytoplasmic and nuclear. Acylation seems to allow the sequestering to the intracellular membranes. Myristoylation may mediate targeting to the intracellular non-Golgi membranes and palmitoylation may mediate the targeting t
Tissue Specificity	Expressed in all tissues and cell lines tested with the highest level of abundance in testis.
Function	catalytic activity:ATP + a protein = ADP + a phosphoprotein..enzyme regulation:Activity depends on Ca(2+) concentration.,function:May be a

Nanjing BYabscience technology Co.,Ltd



SFC-associated serine kinase (splicing factor compartment-associated serine kinase) with a role in intranuclear SR protein (non-snRNP splicing factors containing a serine/arginine-rich domain) trafficking and pre-mRNA processing.,PTM:Autophosphorylated on serine residues.,PTM:Myristoylated. Required for membrane association. Prerequisite for palmitoylation to occur.,PTM:Palmitoylated.,similarity:Belongs to the protein kinase superfamily. CAMK Ser/Thr protein kinase family.,similarity:Contains 1 protein kinase domain.,subcellular location:Localized in the Brefeldin A-sensitive Golgi compartment, at centrosomes, in the nucleus with a somewhat speckle-like presence, membrane-associated to the endoplasmic reticulum (ER) and the plasma membrane (PM), and m

Background

catalytic activity:ATP + a protein = ADP + a phosphoprotein.,enzyme regulation:Activity depends on Ca(2+) concentration.,function:May be a SFC-associated serine kinase (splicing factor compartment-associated serine kinase) with a role in intranuclear SR protein (non-snRNP splicing factors containing a serine/arginine-rich domain) trafficking and pre-mRNA processing.,PTM:Autophosphorylated on serine residues.,PTM:Myristoylated. Required for membrane association. Prerequisite for palmitoylation to occur.,PTM:Palmitoylated.,similarity:Belongs to the protein kinase superfamily. CAMK Ser/Thr protein kinase family.,similarity:Contains 1 protein kinase domain.,subcellular location:Localized in the Brefeldin A-sensitive Golgi compartment, at centrosomes, in the nucleus with a somewhat speckle-like presence, membrane-associated to the endoplasmic reticulum (ER) and the plasma membrane (PM), and more diffusely in the cytoplasm. Found to concentrate in splicing factor compartments (SFCs) within the nucleus of interphase cells. The acylation-negative form may be only cytoplasmic and nuclear. Acylation seems to allow the sequestering to the intracellular membranes. Myristoylation may mediate targeting to the intracellular non-Golgi membranes and palmitoylation may mediate the targeting to the Golgi membranes. Dual acylation is required to stabilize the interaction with Golgi membranes.,subunit:Homodimer.,tissue specificity:Expressed in all tissues and cell lines tested with the highest level of abundance in testis.,

matters needing attention

Avoid repeated freezing and thawing!

Usage suggestions

This product can be used in immunological reaction related experiments. For more information, please consult technical personnel.

Nanjing BYabscience technology Co.,Ltd

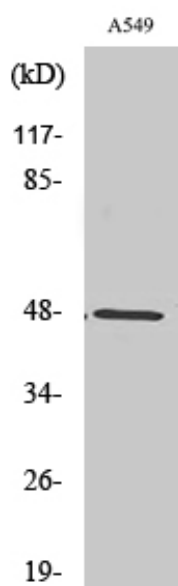
网址: www.njbybio.com

官方热线: 025-5229-8998

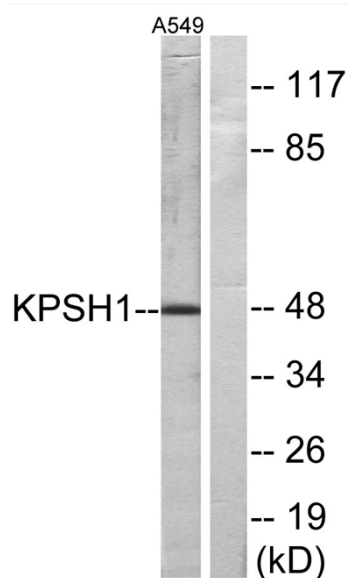
监督电话: 15950492658



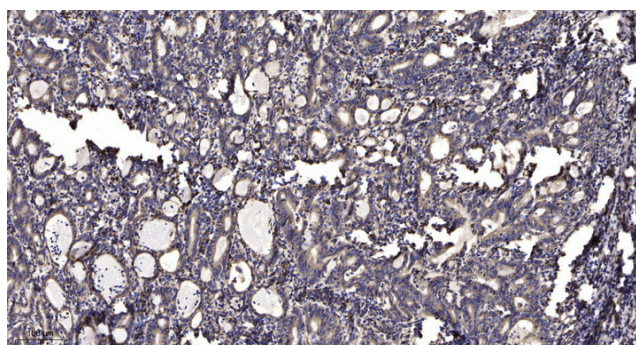
Products Images



Western Blot analysis of various cells using PSK-H1 Polyclonal Antibody



Western blot analysis of lysates from A549 cells, using KPSH1 Antibody. The lane on the right is blocked with the synthesized peptide.



Immunohistochemical analysis of paraffin-embedded human Gastric adenocarcinoma. 1, Antibody was diluted at 1:200(4° overnight). 2, Tris-EDTA,pH9.0 was used for antigen retrieval. 3,Secondary antibody was diluted at 1:200(room temperature, 45min).

Nanjing BYabs science technology Co.,Ltd

网址: www.njbybio.com

官方热线: 025-5229-8998

监督电话: 15950492658