



PSK2 Polyclonal Antibody

Catalog No	BYab-14962
Isotype	IgG
Reactivity	Human;Mouse;Rat
Applications	WB;IHC;IF;ELISA
Gene Name	TAOK1
Protein Name	Serine/threonine-protein kinase TAO1
Immunogen	The antiserum was produced against synthesized peptide derived from human TAOK1. AA range:431-480
Specificity	PSK2 Polyclonal Antibody detects endogenous levels of PSK2 protein.
Formulation	Liquid in PBS containing 50% glycerol, 0.5% BSA and 0.02% sodium azide.
Source	Polyclonal, Rabbit,IgG
Purification	The antibody was affinity-purified from rabbit antiserum by affinity-chromatography using epitope-specific immunogen.
Dilution	WB: 1/500 - 1/2000. IHC: 1/100 - 1/300. ELISA: 1/5000.. IF 1:50-200
Concentration	1 mg/ml
Purity	≥90%
Storage Stability	-20°C/1 year
Synonyms	TAOK1; KIAA1361; MAP3K16; MARKK; Serine/threonine-protein kinase TAO1; Kinase from chicken homolog B; hKFC-B; MARK Kinase; MARKK; Prostate-derived sterile 20-like kinase 2; PSK-2; PSK2; Prostate-derived STE20-like kinase 2; Thousand and one
Observed Band	120kD
Cell Pathway	Cytoplasm .
Tissue Specificity	Highly expressed in the testis, and to a lower extent also expressed in brain, placenta, colon and skeletal muscle.
Function	catalytic activity:ATP + a protein = ADP + a phosphoprotein.,function:Phosphorylates MKK3 (By similarity). Activates the p38 MAP kinase pathway through the specific activation of the upstream MKK3 kinase.,PTM:Autophosphorylated.,similarity:Belongs to the protein kinase superfamily. STE Ser/Thr protein kinase family. STE20 subfamily.,similarity:Contains 1 protein kinase domain.,subunit:Self-associates. Interacts with MKK3.,tissue specificity:Highly expressed in the testis, and to a

Nanjing BYabscience technology Co.,Ltd



lower extent also expressed in brain, placenta, colon and skeletal muscle.,

Background

catalytic activity:ATP + a protein = ADP + a phosphoprotein.,function:Phosphorylates MKK3 (By similarity). Activates the p38 MAP kinase pathway through the specific activation of the upstream MKK3 kinase.,PTM:Autophosphorylated.,similarity:Belongs to the protein kinase superfamily. STE Ser/Thr protein kinase family. STE20 subfamily.,similarity:Contains 1 protein kinase domain.,subunit:Self-associates. Interacts with MKK3.,tissue specificity:Highly expressed in the testis, and to a lower extent also expressed in brain, placenta, colon and skeletal muscle.,

matters needing attention

Avoid repeated freezing and thawing!

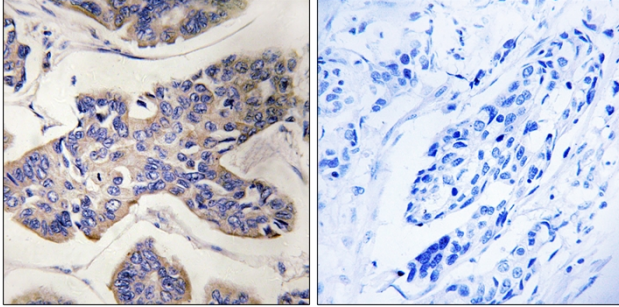
Usage suggestions

This product can be used in immunological reaction related experiments. For more information, please consult technical personnel.

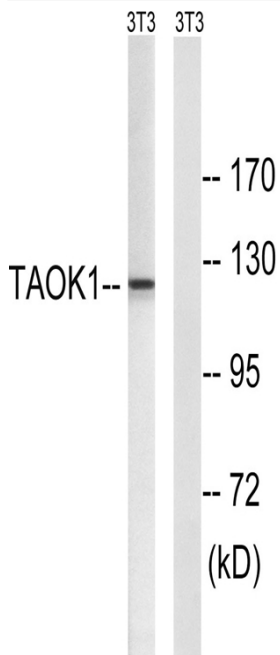
Nanjing BYabscience technology Co.,Ltd



Products Images



Immunohistochemistry analysis of paraffin-embedded human breast carcinoma tissue, using TAOK1 Antibody. The picture on the right is blocked with the synthesized peptide.



Western blot analysis of lysates from NIH/3T3 cells, using TAOK1 Antibody. The lane on the right is blocked with the synthesized peptide.