



PP2Ck Polyclonal Antibody

Catalog No	BYab-14953
Isotype	IgG
Reactivity	Human;Rat;Mouse;
Applications	WB;IHC;IF;ELISA
Gene Name	PPM1K
Protein Name	Protein phosphatase 1K mitochondrial
Immunogen	The antiserum was produced against synthesized peptide derived from human PPM1K. AA range:205-254
Specificity	PP2Ck Polyclonal Antibody detects endogenous levels of PP2Ck protein.
Formulation	Liquid in PBS containing 50% glycerol, 0.5% BSA and 0.02% sodium azide.
Source	Polyclonal, Rabbit,IgG
Purification	The antibody was affinity-purified from rabbit antiserum by affinity-chromatography using epitope-specific immunogen.
Dilution	WB: 1/500 - 1/2000. IHC: 1/100 - 1/300. ELISA: 1/40000.. IF 1:50-200
Concentration	1 mg/ml
Purity	≥90%
Storage Stability	-20°C/1 year
Synonyms	PPM1K; PP2CM; Protein phosphatase 1K; mitochondrial; PP2C domain-containing protein phosphatase 1K; PP2C-like mitochondrial protein; PP2C-type mitochondrial phosphoprotein phosphatase; PTMP; Protein phosphatase 2C isoform kappa; PP2C-kappa
Observed Band	45kD
Cell Pathway	Mitochondrion matrix .
Tissue Specificity	Amygdala,Cerebellum,Lymph node,Pancreas,Testis,
Function	catalytic activity:A phosphoprotein + H(2)O = a protein + phosphate.,caution:Ref.9 has crystallized PPM1K in the presence of magnesium ions. However, PubMed:17336929 reported that no activity toward p-nitrophenylphosphate was seen in the absence of manganese ions and magnesium could not substitute for manganese.,cofactor:Binds 1 magnesium or manganese ion per subunit.,function:Regulates the mitochondrial permeability transition pore and is essential for cellular survival and development.,similarity:Belongs to the PP2C

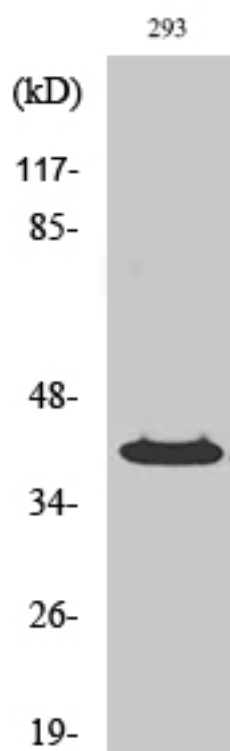
Nanjing BYabscience technology Co.,Ltd



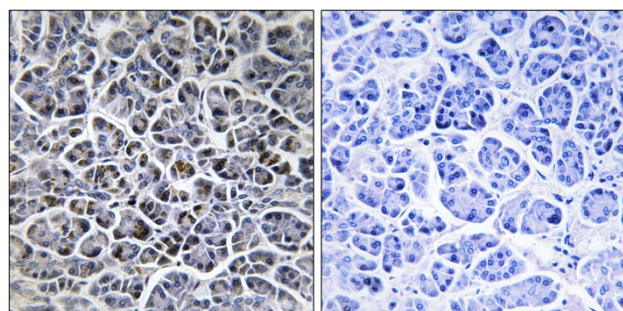
family.,similarity:Contains 1 PP2C-like domain.,

Background	This gene encodes a member of the PPM family of Mn ²⁺ /Mg ²⁺ -dependent protein phosphatases. The encoded protein, essential for cell survival and development, is targeted to the mitochondria where it plays a key role in regulation of the mitochondrial permeability transition pore. [provided by RefSeq, Sep 2012],
matters needing attention	Avoid repeated freezing and thawing!
Usage suggestions	This product can be used in immunological reaction related experiments. For more information, please consult technical personnel.

Products Images

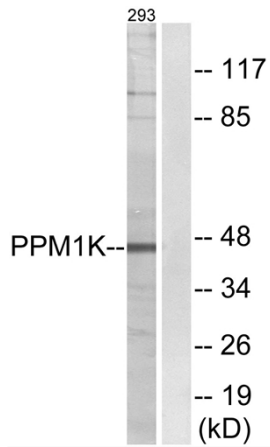


Western Blot analysis of various cells using PP2Ck Polyclonal Antibody

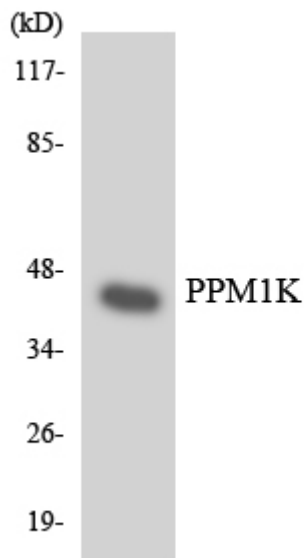


Immunohistochemistry analysis of paraffin-embedded human pancreas tissue, using PPM1K Antibody. The picture on the right is blocked with the synthesized peptide.

Nanjing BYabscience technology Co.,Ltd



Western blot analysis of lysates from 293 cells, using PPM1K Antibody. The lane on the right is blocked with the synthesized peptide.



Western blot analysis of the lysates from HeLa cells using PPM1K antibody.