



# MAST4 Polyclonal Antibody

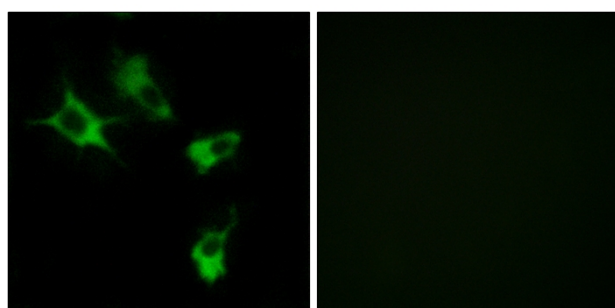
<b>Catalog No</b>	BYab-14829
<b>Isotype</b>	IgG
<b>Reactivity</b>	Human;Mouse
<b>Applications</b>	WB;IHC;IF;ELISA
<b>Gene Name</b>	MAST4
<b>Protein Name</b>	Microtubule-associated serine/threonine-protein kinase 4
<b>Immunogen</b>	The antiserum was produced against synthesized peptide derived from human MAST4. AA range:251-300
<b>Specificity</b>	MAST4 Polyclonal Antibody detects endogenous levels of MAST4 protein.
<b>Formulation</b>	Liquid in PBS containing 50% glycerol, 0.5% BSA and 0.02% sodium azide.
<b>Source</b>	Polyclonal, Rabbit,IgG
<b>Purification</b>	The antibody was affinity-purified from rabbit antiserum by affinity-chromatography using epitope-specific immunogen.
<b>Dilution</b>	Western Blot: 1/500 - 1/2000. Immunohistochemistry: 1/100 - 1/300. Immunofluorescence: 1/200 - 1/1000. ELISA: 1/5000. Not yet tested in other applications.
<b>Concentration</b>	1 mg/ml
<b>Purity</b>	≥90%
<b>Storage Stability</b>	-20°C/1 year
<b>Synonyms</b>	MAST4; KIAA0303; Microtubule-associated serine/threonine-protein kinase 4
<b>Observed Band</b>	36kD
<b>Cell Pathway</b>	Cytoplasm .
<b>Tissue Specificity</b>	Highly expressed in most normal human tissues, with an exception of in testis, small intestine, colon and peripheral blood leukocyte.
<b>Function</b>	catalytic activity:ATP + a protein = ADP + a phosphoprotein.,caution:The sequence shown here is derived from an Ensembl automatic analysis pipeline and should be considered as preliminary data.,cofactor:Magnesium.,PTM:Phosphorylated upon DNA damage, probably by ATM or ATR.,similarity:Belongs to the protein kinase superfamily. AGC Ser/Thr protein kinase family.,similarity:Contains 1 AGC-kinase C-terminal domain.,similarity:Contains 1 PDZ (DHR) domain.,similarity:Contains 1 protein kinase domain.,tissue specificity:Highly expressed in most normal human tissues, with an exception of in testis, small intestine, colon and peripheral blood leukocyte.,

**Nanjing BYabscience technology Co.,Ltd**

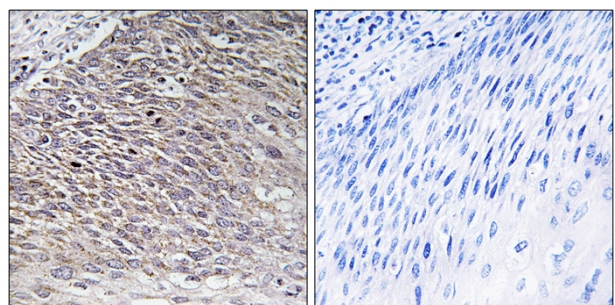


<b>Background</b>	This gene encodes a member of the microtubule-associated serine/threonine protein kinases. The proteins in this family contain a domain that gives the kinase the ability to determine its own scaffold to control the effects of their kinase activities. Alternative splicing results in multiple transcript variants encoding different isoforms. [provided by RefSeq, Mar 2014],
<b>matters needing attention</b>	Avoid repeated freezing and thawing!
<b>Usage suggestions</b>	This product can be used in immunological reaction related experiments. For more information, please consult technical personnel.

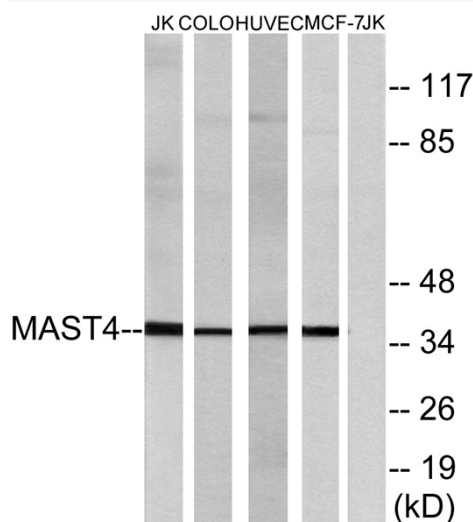
## Products Images



Immunofluorescence analysis of COS7 cells, using MAST4 Antibody. The picture on the right is blocked with the synthesized peptide.



Immunohistochemistry analysis of paraffin-embedded human testis tissue, using MAST4 Antibody. The picture on the right is blocked with the synthesized peptide.



Western blot analysis of lysates from Jurkat, COLO, HUVEC, and MCF-7 cells, using MAST4 Antibody. The lane on the right is blocked with the synthesized peptide.

**Nanjing BYabs science technology Co.,Ltd**

