



# LOK Polyclonal Antibody

Catalog No	BYab-14818
Isotype	IgG
Reactivity	Human;Rat;Mouse;
Applications	WB;ELISA;IHC
Gene Name	STK10
Protein Name	Serine/threonine-protein kinase 10
Immunogen	The antiserum was produced against synthesized peptide derived from human STK10. AA range:491-540
Specificity	LOK Polyclonal Antibody detects endogenous levels of LOK protein.
Formulation	Liquid in PBS containing 50% glycerol, 0.5% BSA and 0.02% sodium azide.
Source	Polyclonal, Rabbit,IgG
Purification	The antibody was affinity-purified from rabbit antiserum by affinity-chromatography using epitope-specific immunogen.
Dilution	WB 1:500-2000;IHC-p 1:50-300; ELISA 2000-20000
Concentration	1 mg/ml
Purity	≥90%
Storage Stability	-20°C/1 year
Synonyms	STK10; LOK; Serine/threonine-protein kinase 10; Lymphocyte-oriented kinase
Observed Band	120kD
Cell Pathway	Cell membrane ; Peripheral membrane protein .
Tissue Specificity	Highly expressed in rapidly proliferating tissues (spleen, placenta, and peripheral blood leukocytes). Also expressed in brain, heart, skeletal muscle, colon, thymus, kidney, liver, small intestine and lung.
Function	catalytic activity:ATP + a protein = ADP + a phosphoprotein.,function:Can act on substrates such as myelin basic protein and histone 2A on serine and threonine residues.,PTM:Autophosphorylated.,similarity:Belongs to the protein kinase superfamily.,similarity:Belongs to the protein kinase superfamily. STE Ser/Thr protein kinase family. STE20 subfamily.,similarity:Contains 1 protein kinase domain.,tissue specificity:Expressed predominantly in lymphoid organs.,
Background	This gene encodes a member of the Ste20 family of serine/threonine protein kinases, and is similar to several known polo-like kinase kinases. The protein can associate with and phosphorylate polo-like kinase 1, and overexpression of a

Nanjing BYabscience technology Co.,Ltd



kinase-dead version of the protein interferes with normal cell cycle progression. The kinase can also negatively regulate interleukin 2 expression in T-cells via the mitogen activated protein kinase kinase 1 pathway. [provided by RefSeq, Jul 2008],

**matters needing attention**

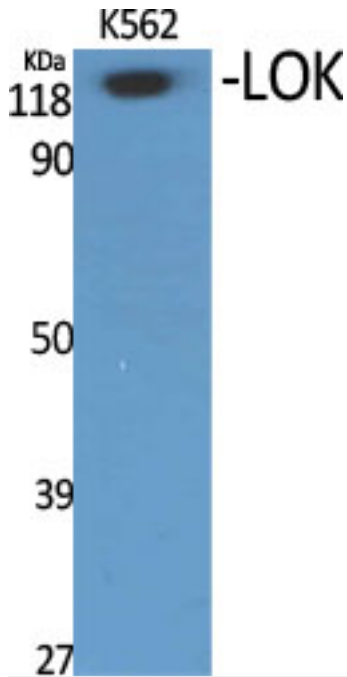
Avoid repeated freezing and thawing!

**Usage suggestions**

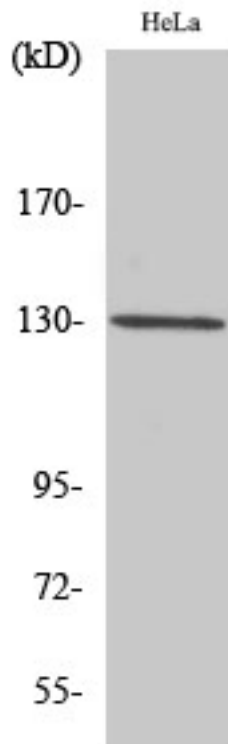
This product can be used in immunological reaction related experiments. For more information, please consult technical personnel.



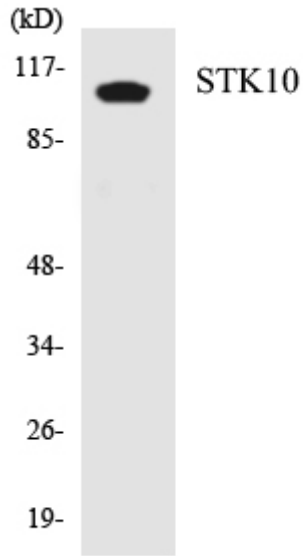
## Products Images



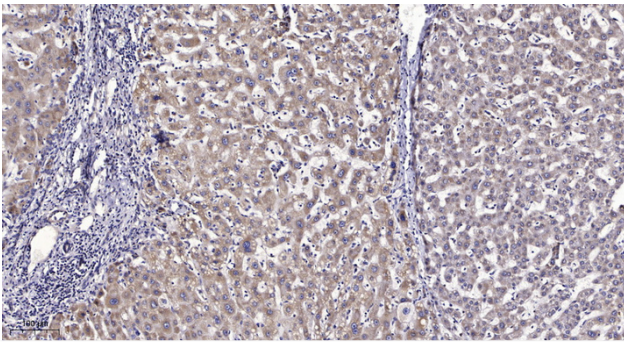
Western Blot analysis of various cells using LOK Polyclonal Antibody



Western Blot analysis of HuvEc cells using LOK Polyclonal Antibody



Western blot analysis of the lysates from HT-29 cells using STK10 antibody.



Immunohistochemical analysis of paraffin-embedded human liver cancer. 1, Antibody was diluted at 1:200(4° overnight). 2, Tris-EDTA,pH9.0 was used for antigen retrieval. 3,Secondary antibody was diluted at 1:200(room temperature, 45min).