



# InsP6 Kinase 3 Polyclonal Antibody

Catalog No	BYab-14790
Isotype	IgG
Reactivity	Human;Mouse
Applications	WB;IHC;IF;ELISA
Gene Name	IP6K3
Protein Name	Inositol hexakisphosphate kinase 3
Immunogen	The antiserum was produced against synthesized peptide derived from human IP6K3. AA range:201-250
Specificity	InsP6 Kinase 3 Polyclonal Antibody detects endogenous levels of InsP6 Kinase 3 protein.
Formulation	Liquid in PBS containing 50% glycerol, 0.5% BSA and 0.02% sodium azide.
Source	Polyclonal, Rabbit,IgG
Purification	The antibody was affinity-purified from rabbit antiserum by affinity-chromatography using epitope-specific immunogen.
Dilution	Western Blot: 1/500 - 1/2000. Immunohistochemistry: 1/100 - 1/300. Immunofluorescence: 1/200 - 1/1000. ELISA: 1/20000. Not yet tested in other applications.
Concentration	1 mg/ml
Purity	≥90%
Storage Stability	-20°C/1 year
Synonyms	IP6K3; IHPK3; Inositol hexakisphosphate kinase 3; InsP6 kinase 3; Inositol hexaphosphate kinase 3
Observed Band	51kD
Cell Pathway	Cytoplasm .
Tissue Specificity	Detected in brain.
Function	catalytic activity:ATP + 1D-myo-inositol 1,3,4,5,6-pentakisphosphate = ADP + diphospho-1D-myo-inositol tetrakisphosphate (isomeric configuration unknown).,catalytic activity:ATP + 1D-myo-inositol hexakisphosphate = ADP + 5-diphospho-1D-myo-inositol (1,2,3,4,6)pentakisphosphate.,function:Converts inositol hexakisphosphate (InsP6) to diphosphoinositol pentakisphosphate (InsP7/PP-InsP5). Converts 1,3,4,5,6-pentakisphosphate (InsP5) to PP-InsP4.,similarity:Belongs to the inositol phosphokinase (IPK) family.,tissue specificity:Detected in brain.,

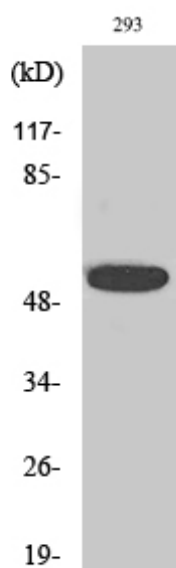
Nanjing BYabscience technology Co.,Ltd



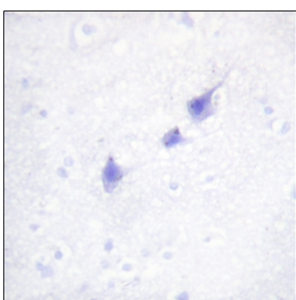
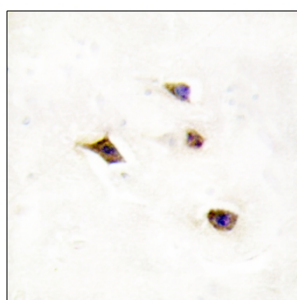
Background	This gene encodes a protein that belongs to the inositol phosphokinase (IPK) family. This protein is likely responsible for the conversion of inositol hexakisphosphate (InsP6) to diphosphoinositol pentakisphosphate (InsP7/PP-InsP5). It may also convert 1,3,4,5,6-pentakisphosphate (InsP5) to PP-InsP4. Alternative splicing results in multiple transcript variants encoding the same protein.[provided by RefSeq, Dec 2008],
matters needing attention	Avoid repeated freezing and thawing!
Usage suggestions	This product can be used in immunological reaction related experiments. For more information, please consult technical personnel.



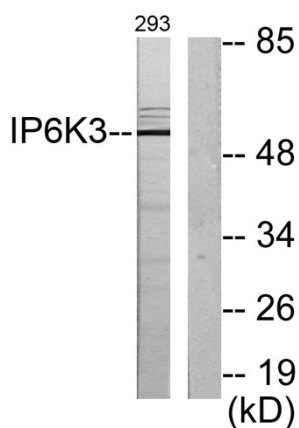
## Products Images



Western Blot analysis of various cells using InsP6 Kinase 3 Polyclonal Antibody



Immunohistochemistry analysis of paraffin-embedded human brain tissue, using IP6K3 Antibody. The picture on the right is blocked with the synthesized peptide.



Western blot analysis of lysates from 293 cells, using IP6K3 Antibody. The lane on the right is blocked with the synthesized peptide.