



# HIPK4 Polyclonal Antibody

|                           |   |
|---------------------------|---|
| <b>Catalog No</b>         | BYab-14774  |
| <b>Isotype</b>            | IgG   |
| <b>Reactivity</b>         | Human;Mouse;Rat   |
| <b>Applications</b>       | WB;IHC;IF;ELISA   |
| <b>Gene Name</b>          | HIPK4   |
| <b>Protein Name</b>       | Homeodomain-interacting protein kinase 4  |
| <b>Immunogen</b>          | The antiserum was produced against synthesized peptide derived from human HIPK4. AA range:511-560   |
| <b>Specificity</b>        | HIPK4 Polyclonal Antibody detects endogenous levels of HIPK4 protein.   |
| <b>Formulation</b>        | Liquid in PBS containing 50% glycerol, 0.5% BSA and 0.02% sodium azide.   |
| <b>Source</b>             | Polyclonal, Rabbit,IgG  |
| <b>Purification</b>       | The antibody was affinity-purified from rabbit antiserum by affinity-chromatography using epitope-specific immunogen.   |
| <b>Dilution</b>           | Western Blot: 1/500 - 1/2000. Immunohistochemistry: 1/100 - 1/300. Immunofluorescence: 1/200 - 1/1000. ELISA: 1/20000. Not yet tested in other applications.  |
| <b>Concentration</b>      | 1 mg/ml   |
| <b>Purity</b>             | ≥90%  |
| <b>Storage Stability</b>  | -20°C/1 year  |
| <b>Synonyms</b>           | HIPK4; Homeodomain-interacting protein kinase 4   |
| <b>Observed Band</b>      | 70kD  |
| <b>Cell Pathway</b>       | Cytoplasm .   |
| <b>Tissue Specificity</b> | Testis,   |
| <b>Function</b>           | catalytic activity:ATP + a protein = ADP + a phosphoprotein.,function:Protein kinase that phosphorylates human TP53 at Ser-9, and thus induces TP53 repression of BIRC5 promoter (By similarity). May act as a corepressor of transcription factors .,PTM:Autophosphorylated.,similarity:Belongs to the protein kinase superfamily. CMGC Ser/Thr protein kinase family. HIPK subfamily.,similarity:Contains 1 protein kinase domain., |
| <b>Background</b>         | homeodomain interacting protein kinase 4(HIPK4) Homo sapiens This gene encodes a member of the homeodomain interacting protein kinase (HIPK) family of proteins. While other members of this family are found throughout vertebrates,   |

**Nanjing BYabscience technology Co.,Ltd**



this member is present only in mammals. Compared to other members of this family, the encoded protein lacks a nuclear localization signal and a C-terminal autoinhibitory domain. The encoded protein exhibits kinase activity and may phosphorylate the tumor suppressor protein p53. [provided by RefSeq, Jul 2016],

**matters needing attention**

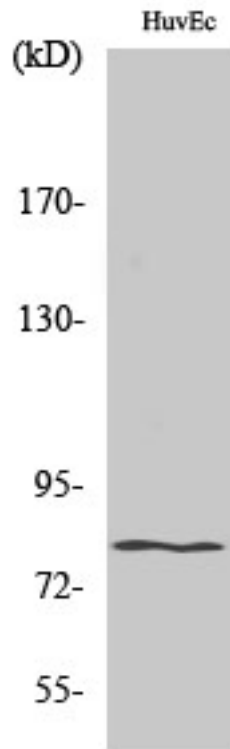
Avoid repeated freezing and thawing!

**Usage suggestions**

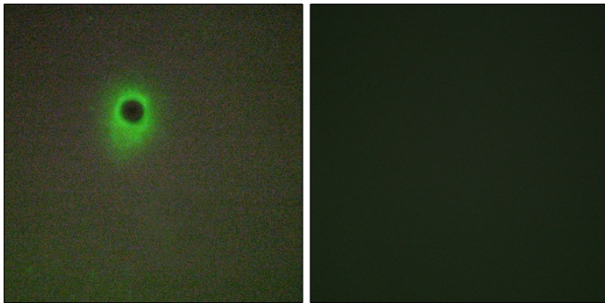
This product can be used in immunological reaction related experiments. For more information, please consult technical personnel.



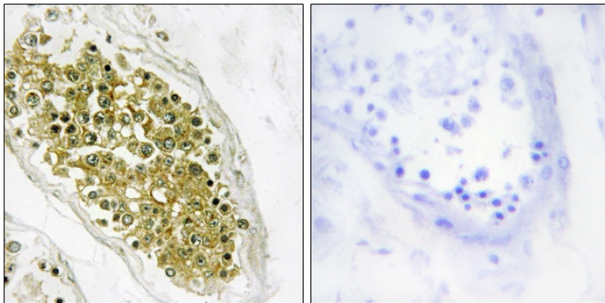
## Products Images



Western Blot analysis of various cells using HIPK4 Polyclonal Antibody



Immunofluorescence analysis of A549 cells, using HIPK4 Antibody. The picture on the right is blocked with the synthesized peptide.



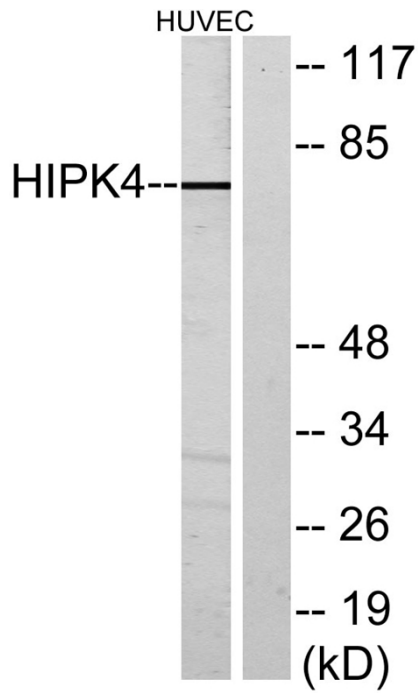
Immunohistochemistry analysis of paraffin-embedded human testis tissue, using HIPK4 Antibody. The picture on the right is blocked with the synthesized peptide.

**Nanjing BYabs science technology Co.,Ltd**

网址: [www.njbybio.com](http://www.njbybio.com)

官方热线: 025-5229-8998

监督电话: 15950492658



Western blot analysis of lysates from HUVEC cells, using HIPK4 Antibody. The lane on the right is blocked with the synthesized peptide.