



GSK3α/β Polyclonal Antibody

Catalog No	BYab-14770
Isotype	IgG
Reactivity	Human;Mouse;Rat;Drosophila;Drosophila
Applications	WB;IHC;IF;ELISA
Gene Name	GSK3A/GSK3B
Protein Name	Glycogen synthase kinase-3 alpha/beta
Immunogen	The antiserum was produced against synthesized peptide derived from human GSK3 alpha/beta. AA range:246-295
Specificity	GSK3α/β Polyclonal Antibody detects endogenous levels of GSK3α/β protein.
Formulation	Liquid in PBS containing 50% glycerol, 0.5% BSA and 0.02% sodium azide.
Source	Polyclonal, Rabbit,IgG
Purification	The antibody was affinity-purified from rabbit antiserum by affinity-chromatography using epitope-specific immunogen.
Dilution	WB: 1/500 - 1/2000. IHC: 1/100 - 1/300. ELISA: 1/20000.. IF 1:50-200
Concentration	1 mg/ml
Purity	≥90%
Storage Stability	-20°C/1 year
Synonyms	GSK3A; Glycogen synthase kinase-3 alpha; GSK-3 alpha; Serine/threonine-protein kinase GSK3A; GSK3B; Glycogen synthase kinase-3 beta; GSK-3 beta; Serine/threonine-protein kinase GSK3B
Observed Band	51,46kD
Cell Pathway	mitochondrion,cytosol,beta-catenin destruction complex,postsynapse,
Tissue Specificity	Brain,Eye,Foreskin,Lung,Pancreas,Platelet,Testis,
Function	catalytic activity:ATP + [tau protein] = ADP + [tau protein] phosphate.,function:Implicated in the hormonal control of several regulatory proteins including glycogen synthase, MYB and the transcription factor JUN.,similarity:Belongs to the protein kinase superfamily.,similarity:Belongs to the protein kinase superfamily. CMGC Ser/Thr protein kinase family. GSK-3 subfamily.,similarity:Contains 1 protein kinase domain.,subunit:Monomer.,
Background	glycogen synthase kinase 3 alpha(GSK3A) Homo sapiens This gene encodes a multifunctional Ser/Thr protein kinase that is implicated in the control of several

Nanjing BYabscience technology Co.,Ltd



regulatory proteins including glycogen synthase, and transcription factors, such as JUN. It also plays a role in the WNT and PI3K signaling pathways, as well as regulates the production of beta-amyloid peptides associated with Alzheimer's disease. [provided by RefSeq, Oct 2011],

matters needing attention

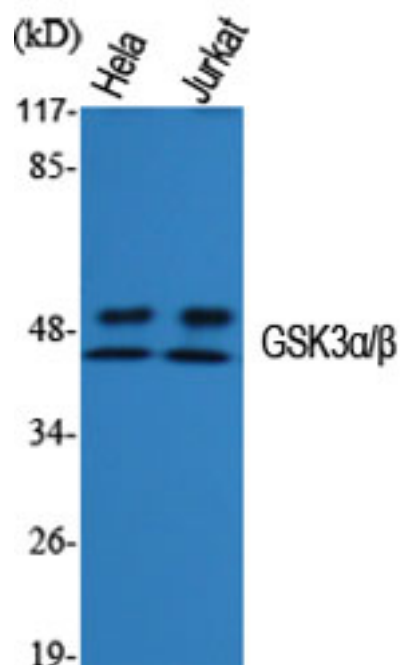
Avoid repeated freezing and thawing!

Usage suggestions

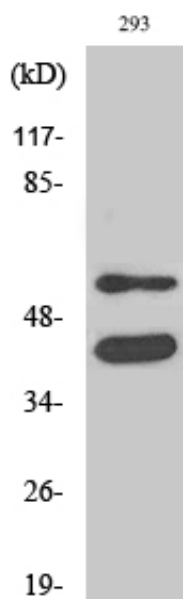
This product can be used in immunological reaction related experiments. For more information, please consult technical personnel.



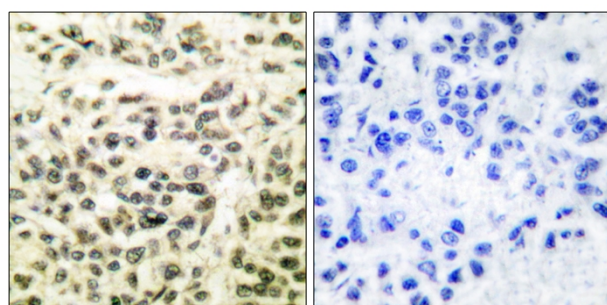
Products Images



Western Blot analysis of various cells using GSK3α/β Polyclonal Antibody diluted at 1:1000



Western Blot analysis of 293 cells using GSK3α/β Polyclonal Antibody diluted at 1:1000



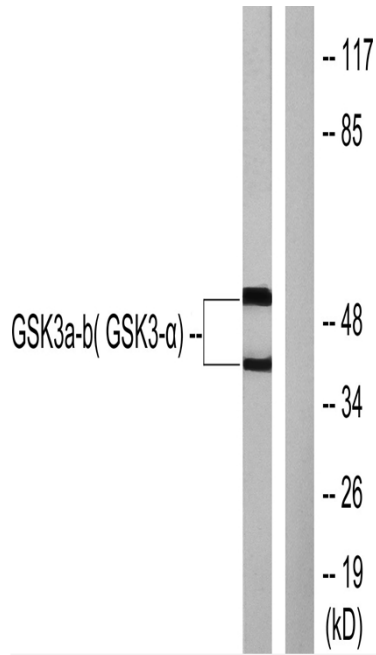
Immunohistochemistry analysis of paraffin-embedded human breast carcinoma tissue, using GSK3α/β Antibody. The picture on the right is blocked with the synthesized peptide.

Nanjing BYabs science technology Co.,Ltd

网址: www.njbybio.com

官方热线: 025-5229-8998

监督电话: 15950492658



Western blot analysis of lysates from 293 cells, treated with TNF-α 20ng/ml 30', using GSK3 alpha/beta Antibody. The lane on the right is blocked with the synthesized peptide.