



Glycerate Kinase Polyclonal Antibody

| | |
|---------------------------|---|
| Catalog No | BYab-14761 |
| Isotype | IgG |
| Reactivity | Human;Mouse;Rat |
| Applications | WB;IHC;IF;ELISA |
| Gene Name | GLYCK |
| Protein Name | Glycerate kinase |
| Immunogen | The antiserum was produced against synthesized peptide derived from human GLYCK. AA range:101-150 |
| Specificity | Glycerate Kinase Polyclonal Antibody detects endogenous levels of Glycerate Kinase protein. |
| Formulation | Liquid in PBS containing 50% glycerol, 0.5% BSA and 0.02% sodium azide. |
| Source | Polyclonal, Rabbit,IgG |
| Purification | The antibody was affinity-purified from rabbit antiserum by affinity-chromatography using epitope-specific immunogen. |
| Dilution | Western Blot: 1/500 - 1/2000. Immunohistochemistry: 1/100 - 1/300. Immunofluorescence: 1/200 - 1/1000. ELISA: 1/20000. Not yet tested in other applications. |
| Concentration | 1 mg/ml |
| Purity | ≥90% |
| Storage Stability | -20°C/1 year |
| Synonyms | GLYCK; HBEK4; LP5910; Glycerate kinase; HBeAg-binding protein 4 |
| Observed Band | 60kD |
| Cell Pathway | [Isoform 1]: Cytoplasm .; [Isoform 2]: Cytoplasm. Mitochondrion . |
| Tissue Specificity | Widely expressed. |
| Function | catalytic activity:ATP + (R)-glycerate = ADP + 3-phospho-(R)-glycerate.,disease:Defects in GLYCK are the cause of D-glyceric acidemia [MIM:220120]. It is characterized by nonketotic hyperglycinemia with the excretion of D-glyceric acid in the urine and the presence of this substance in the serum.,similarity:Belongs to the glycerate kinase type-2 family.,tissue specificity:Widely expressed., |
| Background | This locus encodes a member of the glycerate kinase type-2 family. The encoded enzyme catalyzes the phosphorylation of (R)-glycerate and may be involved in serine degradation and fructose metabolism. Decreased activity of the |

Nanjing BYabscience technology Co.,Ltd



encoded enzyme may be associated with the disease D-glyceric aciduria. Alternatively spliced transcript variants have been described. [provided by RefSeq, Jan 2009],

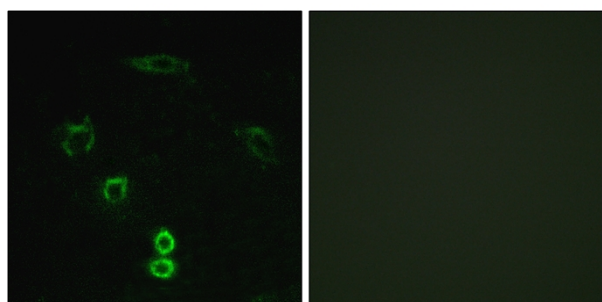
matters needing attention

Avoid repeated freezing and thawing!

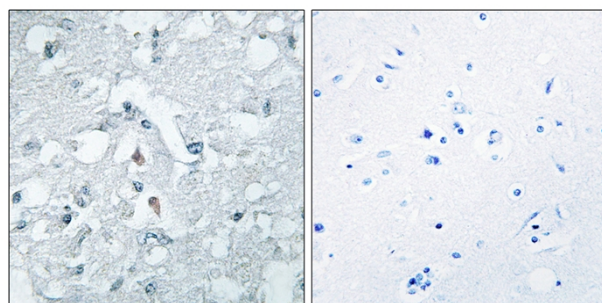
Usage suggestions

This product can be used in immunological reaction related experiments. For more information, please consult technical personnel.

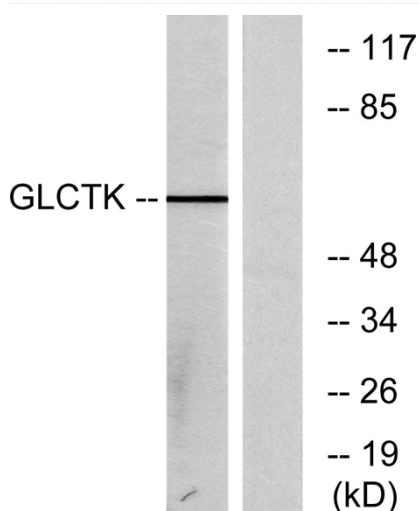
Products Images



Immunofluorescence analysis of A549 cells, using GLCTK Antibody. The picture on the right is blocked with the synthesized peptide.



Immunohistochemistry analysis of paraffin-embedded human brain tissue, using GLCTK Antibody. The picture on the right is blocked with the synthesized peptide.



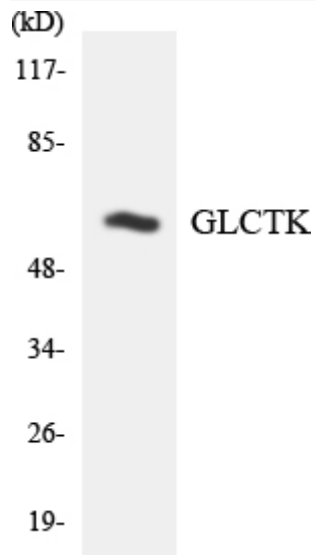
Western blot analysis of lysates from NIH/3T3 cells, using GLCTK Antibody. The lane on the right is blocked with the synthesized peptide.

Nanjing BYabscience technology Co.,Ltd

网址: www.njbybio.com

官方热线: 025-5229-8998

监督电话: 15950492658



Western blot analysis of the lysates from HUVEC cells using GLCTK antibody.