



CaMKI β Polyclonal Antibody

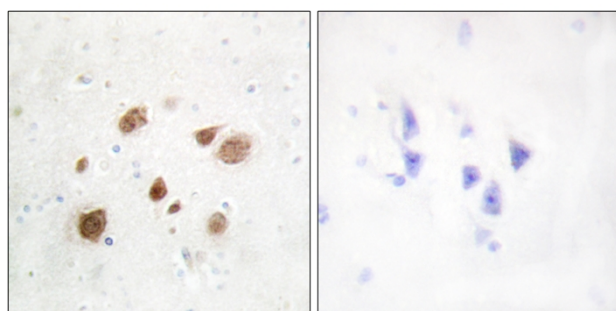
Catalog No	BYab-14691
Isotype	IgG
Reactivity	Human;Mouse;Rat
Applications	WB;IHC;IF;ELISA
Gene Name	PNCK
Protein Name	Calcium/calmodulin-dependent protein kinase type 1B
Immunogen	The antiserum was produced against synthesized peptide derived from human CaMK1-beta. AA range:161-210
Specificity	CaMKI β Polyclonal Antibody detects endogenous levels of CaMKI β protein.
Formulation	Liquid in PBS containing 50% glycerol, 0.5% BSA and 0.02% sodium azide.
Source	Polyclonal, Rabbit,IgG
Purification	The antibody was affinity-purified from rabbit antiserum by affinity-chromatography using epitope-specific immunogen.
Dilution	WB: 1/500 - 1/2000. IHC: 1/100 - 1/300. ELISA: 1/10000.. IF 1:50-200
Concentration	1 mg/ml
Purity	≥90%
Storage Stability	-20°C/1 year
Synonyms	PNCK; Calcium/calmodulin-dependent protein kinase type 1B; CaM kinase I beta; CaM kinase IB; CaM-KI beta; CaMKI-beta; Pregnancy up-regulated non-ubiquitously-expressed CaM kinase
Observed Band	38kD
Cell Pathway	Cytoplasm . Nucleus .
Tissue Specificity	Brain,Liver,Placenta,Thalamus,
Function	catalytic activity:ATP + a protein = ADP + a phosphoprotein.,enzyme regulation:Activated by Ca(2+)/calmodulin.,function:Calcium/calmodulin-dependent protein kinase belonging to a proposed calcium-triggered signaling cascade. In vitro phosphorylates CREB1 and SYN1/synapsin I. Phosphorylates and activates CAMK1.,PTM:Phosphorylated by CAMKK1.,similarity:Belongs to the protein kinase superfamily.,similarity:Belongs to the protein kinase superfamily. CAMK Ser/Thr protein kinase family. CaMK subfamily.,similarity:Contains 1 protein kinase domain.,

Nanjing BYabscience technology Co.,Ltd

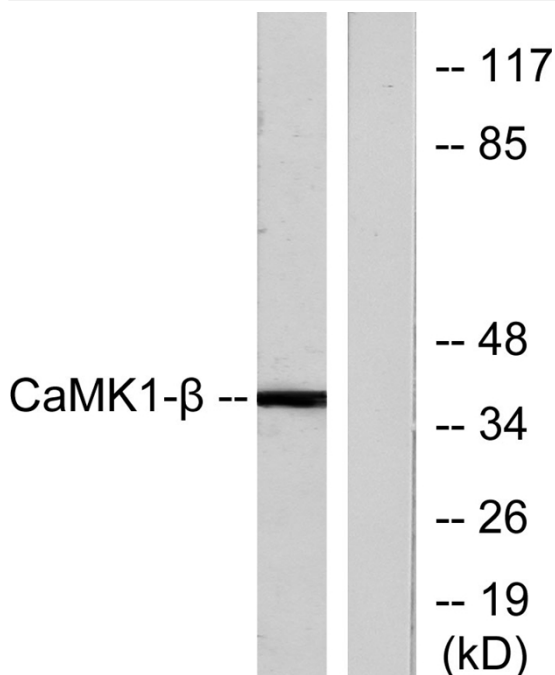


Background	PNCK is a member of the calcium/calmodulin-dependent protein kinase family of protein serine/threonine kinases (see CAMK1; MIM 604998) (Gardner et al., 2000 [PubMed 10673339]).[supplied by OMIM, Mar 2008],
matters needing attention	Avoid repeated freezing and thawing!
Usage suggestions	This product can be used in immunological reaction related experiments. For more information, please consult technical personnel.

Products Images



Immunohistochemistry analysis of paraffin-embedded human brain tissue, using CaMK1-beta Antibody. The picture on the right is blocked with the synthesized peptide.



Western blot analysis of lysates from LOVO cells, treated with H₂O₂ 100uM 30', using CaMK1-beta Antibody. The lane on the right is blocked with the synthesized peptide.