



A-Raf (phospho Tyr302) Polyclonal Antibody

Catalog No	BYab-14521
Isotype	IgG
Reactivity	Human;Mouse;Rat
Applications	WB;IHC;IF;ELISA
Gene Name	ARAF
Protein Name	Serine/threonine-protein kinase A-Raf
Immunogen	The antiserum was produced against synthesized peptide derived from human A-RAF around the phosphorylation site of Tyr302. AA range:276-325
Specificity	Phospho-A-Raf (Y302) Polyclonal Antibody detects endogenous levels of A-Raf protein only when phosphorylated at Y302.
Formulation	Liquid in PBS containing 50% glycerol, 0.5% BSA and 0.02% sodium azide.
Source	Polyclonal, Rabbit,IgG
Purification	The antibody was affinity-purified from rabbit antiserum by affinity-chromatography using epitope-specific immunogen.
Dilution	Western Blot: 1/500 - 1/2000. Immunohistochemistry: 1/100 - 1/300. Immunofluorescence: 1/200 - 1/1000. ELISA: 1/20000. Not yet tested in other applications.
Concentration	1 mg/ml
Purity	≥90%
Storage Stability	-20°C/1 year
Synonyms	ARAF; ARAF1; PKS; PKS2; Serine/threonine-protein kinase A-Raf; Proto-oncogene A-Raf; Proto-oncogene A-Raf-1; Proto-oncogene Pks
Observed Band	68kD
Cell Pathway	intracellular,mitochondrion,cytosol,
Tissue Specificity	Predominantly in urogenital tissues.
Function	catalytic activity:ATP + a protein = ADP + a phosphoprotein.,cofactor:Binds 2 zinc ions per subunit.,function:Involved in the transduction of mitogenic signals from the cell membrane to the nucleus.,similarity:Belongs to the protein kinase superfamily.,similarity:Belongs to the protein kinase superfamily. TKL Ser/Thr protein kinase family. RAF subfamily.,similarity:Contains 1 phorbol-ester/DAG-type zinc finger.,similarity:Contains 1 protein kinase domain.,similarity:Contains 1 RBD (Ras-binding) domain.,subunit:Interacts with TH1L/NELFD.,tissue specificity:Predominantly in urogenital tissues.,

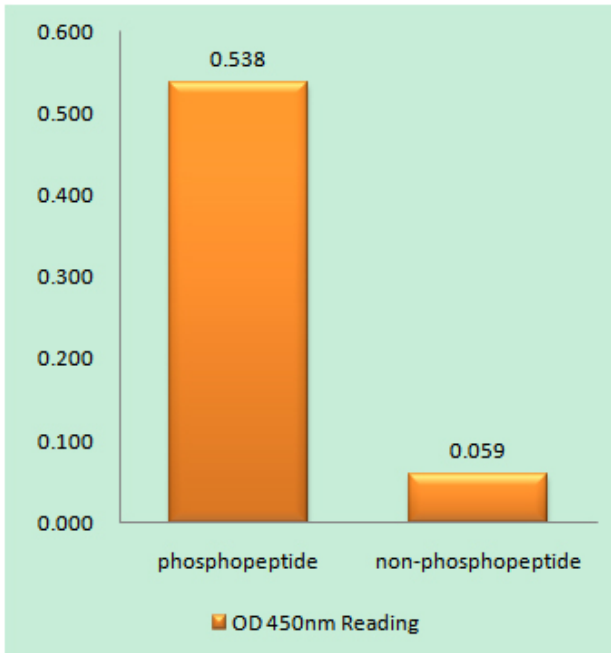
Nanjing BYabscience technology Co.,Ltd



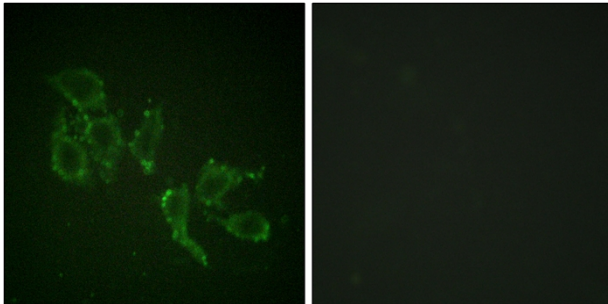
Background	This proto-oncogene belongs to the RAF subfamily of the Ser/Thr protein kinase family, and maybe involved in cell growth and development. Alternatively spliced transcript variants encoding different isoforms have been found for this gene.[provided by RefSeq, Jan 2012],
matters needing attention	Avoid repeated freezing and thawing!
Usage suggestions	This product can be used in immunological reaction related experiments. For more information, please consult technical personnel.



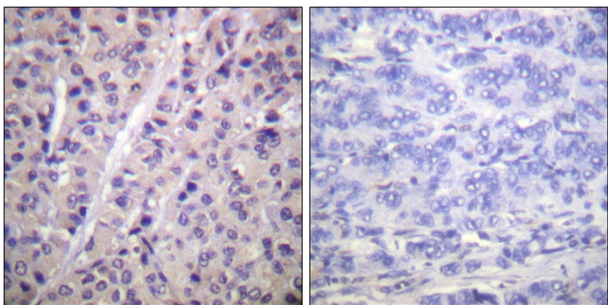
Products Images



Enzyme-Linked Immunosorbent Assay (Phospho-ELISA) for Immunogen Phosphopeptide (Phospho-left) and Non-Phosphopeptide (Phospho-right), using A-RAF (Phospho-Tyr302) Antibody



Immunofluorescence analysis of HepG2 cells, using A-RAF (Phospho-Tyr302) Antibody. The picture on the right is blocked with the phospho peptide.



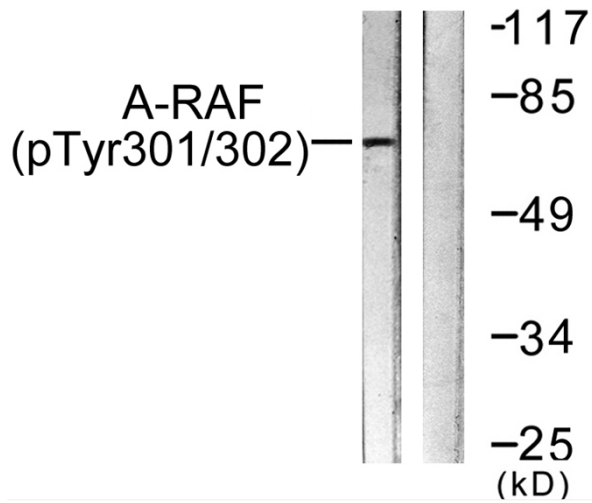
Immunohistochemistry analysis of paraffin-embedded human breast carcinoma, using A-RAF (Phospho-Tyr302) Antibody. The picture on the right is blocked with the phospho peptide.

Nanjing BYabscience technology Co.,Ltd

网址: www.njbybio.com

官方热线: 025-5229-8998

监督电话: 15950492658



Western blot analysis of lysates from HeLa cells treated with PMA 125ng/ml 30', using A-RAF (Phospho-Tyr302) Antibody. The lane on the right is blocked with the phospho peptide.