



ACK (phospho Tyr284) Polyclonal Antibody

Catalog No	BYab-14518
Isotype	IgG
Reactivity	Human;Mouse
Applications	WB;IHC;IF;ELISA
Gene Name	TNK2
Protein Name	Activated CDC42 kinase 1
Immunogen	The antiserum was produced against synthesized peptide derived from human ACK1 around the phosphorylation site of Tyr284. AA range:250-299
Specificity	Phospho-ACK (Y284) Polyclonal Antibody detects endogenous levels of ACK protein only when phosphorylated at Y284.
Formulation	Liquid in PBS containing 50% glycerol, 0.5% BSA and 0.02% sodium azide.
Source	Polyclonal, Rabbit,IgG
Purification	The antibody was affinity-purified from rabbit antiserum by affinity-chromatography using epitope-specific immunogen.
Dilution	Western Blot: 1/500 - 1/2000. Immunohistochemistry: 1/100 - 1/300. Immunofluorescence: 1/200 - 1/1000. ELISA: 1/10000. Not yet tested in other applications.
Concentration	1 mg/ml
Purity	≥90%
Storage Stability	-20°C/1 year
Synonyms	TNK2; ACK1; Activated CDC42 kinase 1; ACK-1; Tyrosine kinase non-receptor protein 2
Observed Band	120kD
Cell Pathway	Cell membrane . Nucleus . Endosome . Cell junction, adherens junction . Cytoplasmic vesicle membrane; Peripheral membrane protein; Cytoplasmic side . Cytoplasmic vesicle, clathrin-coated vesicle . Membrane, clathrin-coated pit . Cytoplasm, perinuclear region . Cytoplasm, cytosol . The Tyr-284 phosphorylated form is found both in the membrane and nucleus (By similarity). Co-localizes with EGFR on endosomes (PubMed:20333297). Nuclear translocation is CDC42-dependent (By similarity). Detected in long filamentous cytosolic structures where it co-localizes with CTPS1 (By similarity). .
Tissue Specificity	The Tyr-284 phosphorylated form shows a significant increase in expression in breast cancers during the progressive stages i.e. normal to hyperplasia (ADH), ductal carcinoma in situ (DCIS), invasive ductal carcinoma (IDC) and lymph node metastatic (LNMM) stages. It also shows a significant increase in expression in prostate cancers during the progressive stages.

Nanjing BYabscience technology Co.,Ltd



Function	catalytic activity:ATP + a [protein]-L-tyrosine = ADP + a [protein]-L-tyrosine phosphate.,cofactor:Magnesium.,enzyme regulation:The SH3 domain appears to play an autoinhibitory role.,function:Downstream effector of CDC42 which mediates CDC42-dependent cell migration via phosphorylation of BCAR1. Binds to both poly- and mono-ubiquitin and regulates ligand-induced degradation of EGFR. Participates in clathrin-mediated endocytosis. May be involved both in adult synaptic function and plasticity and in brain development.,sequence caution:Unlikely isoform. Aberrant splice sites.,similarity:Belongs to the protein kinase superfamily. Tyr protein kinase family.,similarity:Contains 1 CRIB domain.,similarity:Contains 1 protein kinase domain.,similarity:Contains 1 SH3 domain.,subunit:Interacts with CDC42. Interacts with activated CSPG4.,
Background	This gene encodes a tyrosine kinase that binds Cdc42Hs in its GTP-bound form and inhibits both the intrinsic and GTPase-activating protein (GAP)-stimulated GTPase activity of Cdc42Hs. This binding is mediated by a unique sequence of 47 amino acids C-terminal to an SH3 domain. The protein may be involved in a regulatory mechanism that sustains the GTP-bound active form of Cdc42Hs and which is directly linked to a tyrosine phosphorylation signal transduction pathway. Several alternatively spliced transcript variants have been identified from this gene, but the full-length nature of only two transcript variants has been determined. [provided by RefSeq, Jul 2008],
matters needing attention	Avoid repeated freezing and thawing!
Usage suggestions	This product can be used in immunological reaction related experiments. For more information, please consult technical personnel.

Nanjing BYabscience technology Co.,Ltd

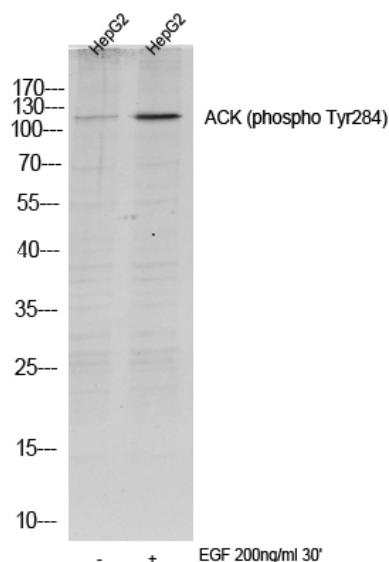
网址: www.njbybio.com

官方热线: 025-5229-8998

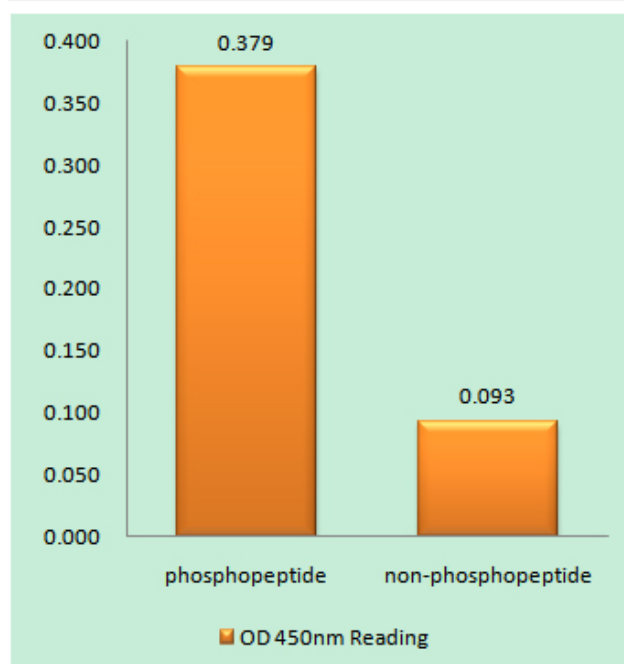
监督电话: 15950492658



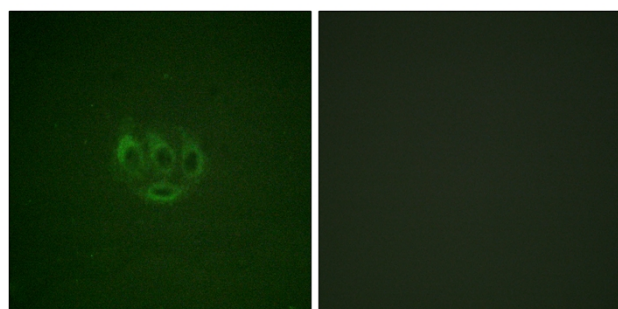
Products Images



Western blot analysis of lysates from HepG2 cells, treated with EGF 200ng/ml 30', (Green) primary antibody was diluted at 1:1000, 4° over night, secondary antibody(cat:RS23920) was diluted at 1:10000, 37° 1 hour.

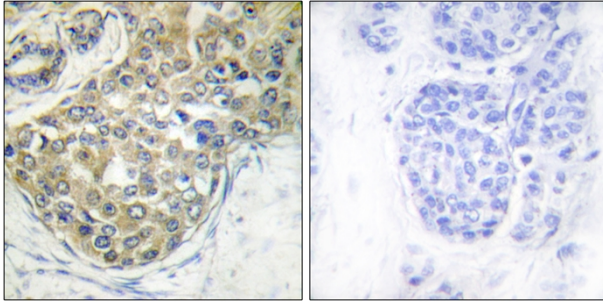


Enzyme-Linked Immunosorbent Assay (Phospho-ELISA) for Immunogen Phosphopeptide (Phospho-left) and Non-Phosphopeptide (Phospho-right), using ACK1 (Phospho-Tyr284) Antibody

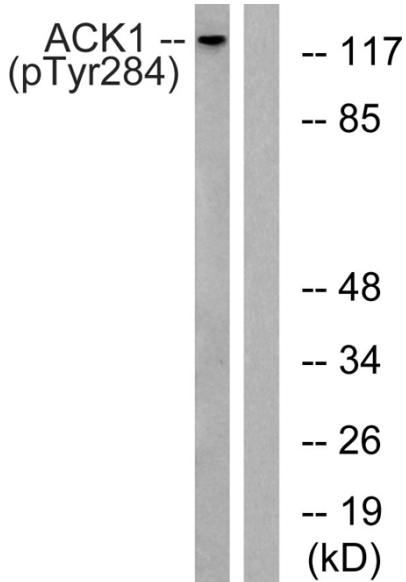


Immunofluorescence analysis of A549 cells, using ACK1 (Phospho-Tyr284) Antibody. The picture on the right is blocked with the phospho peptide.

Nanjing BYabscience technology Co.,Ltd



Immunohistochemistry analysis of paraffin-embedded human breast carcinoma, using ACK1 (Phospho-Tyr284) Antibody. The picture on the right is blocked with the phospho peptide.



Western blot analysis of lysates from HepG2 cells treated with EGF 200ng/ml 30', using ACK1 (Phospho-Tyr284) Antibody. The lane on the right is blocked with the phospho peptide.