



# PTP $\alpha$ (phospho Tyr798) Polyclonal Antibody

Catalog No	BYab-14362
Isotype	IgG
Reactivity	Human;Mouse;Rat;Monkey
Applications	WB;ELISA;IHC
Gene Name	PTPRA
Protein Name	Receptor-type tyrosine-protein phosphatase alpha
Immunogen	The antiserum was produced against synthesized peptide derived from human PTPRA around the phosphorylation site of Tyr798. AA range:753-802
Specificity	Phospho-PTP $\alpha$ (Y798) Polyclonal Antibody detects endogenous levels of PTP $\alpha$ protein only when phosphorylated at Y798.
Formulation	Liquid in PBS containing 50% glycerol, 0.5% BSA and 0.02% sodium azide.
Source	Polyclonal, Rabbit,IgG
Purification	The antibody was affinity-purified from rabbit antiserum by affinity-chromatography using epitope-specific immunogen.
Dilution	WB 1:500-2000;IHC-p 1:50-300; ELISA 2000-20000
Concentration	1 mg/ml
Purity	$\geq 90\%$
Storage Stability	-20°C/1 year
Synonyms	PTPRA; PTPA; PTPRL2; Receptor-type tyrosine-protein phosphatase alpha; Protein-tyrosine phosphatase alpha; R-PTP-alpha
Observed Band	100 90kD
Cell Pathway	Cell membrane ; Single-pass type I membrane protein . Cell junction, focal adhesion . Localizes to focal adhesion sites following integrin engagement. .
Tissue Specificity	Brain,Epithelium,Kidney,Lymph node,Skin,
Function	catalytic activity:Protein tyrosine phosphate + H(2)O = protein tyrosine + phosphate.,similarity:Belongs to the protein-tyrosine phosphatase family. Receptor class 4 subfamily.,similarity:Contains 2 tyrosine-protein phosphatase domains.,
Background	The protein encoded by this gene is a member of the protein tyrosine phosphatase (PTP) family. PTPs are known to be signaling molecules that regulate a variety of cellular processes including cell growth, differentiation, mitotic cycle, and oncogenic transformation. This PTP contains an extracellular domain, a single transmembrane segment and two tandem intracytoplasmic catalytic

Nanjing BYabscience technology Co.,Ltd



domains, and thus represents a receptor-type PTP. This PTP has been shown to dephosphorylate and activate Src family tyrosine kinases, and is implicated in the regulation of integrin signaling, cell adhesion and proliferation. Three alternatively spliced variants of this gene, which encode two distinct isoforms, have been reported. [provided by RefSeq, Jul 2008],

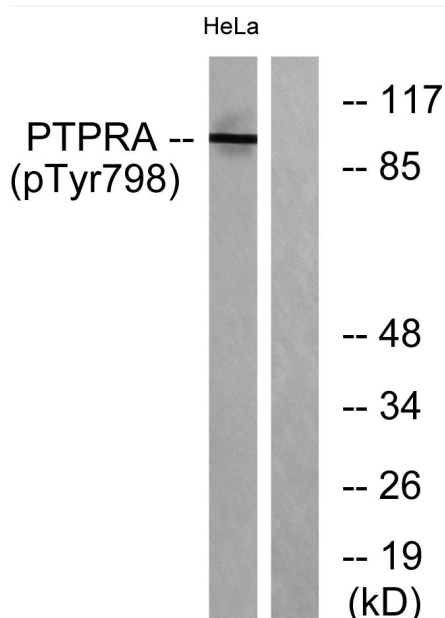
**matters needing attention**

Avoid repeated freezing and thawing!

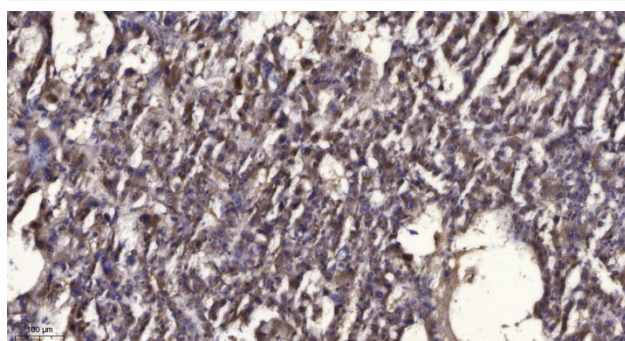
**Usage suggestions**

This product can be used in immunological reaction related experiments. For more information, please consult technical personnel.

## Products Images



Western blot analysis of lysates from HeLa cells treated with serum 20% 15', using PTPRA (Phospho-Tyr798) Antibody. The lane on the right is blocked with the phospho peptide.



Immunohistochemical analysis of paraffin-embedded human liver cancer. 1, Antibody was diluted at 1:200(4° overnight). 2, Tris-EDTA, pH9.0 was used for antigen retrieval. 3, Secondary antibody was diluted at 1:200(room temperature, 45min).

**Nanjing BYabscience technology Co.,Ltd**

网址: [www.njbybio.com](http://www.njbybio.com)

官方热线: 025-5229-8998

监督电话: 15950492658