



# p70 S6 kinase $\alpha$ (phospho Thr229) Polyclonal Antibody

<b>Catalog No</b>	BYab-14334
<b>Isotype</b>	IgG
<b>Reactivity</b>	Human;Mouse;Rat;Pig
<b>Applications</b>	WB;IHC;IF;ELISA
<b>Gene Name</b>	RPS6KB1 STK14A P70S6K
<b>Protein Name</b>	Ribosomal protein S6 kinase beta-1
<b>Immunogen</b>	The antiserum was produced against synthesized peptide derived from human p70 S6 Kinase around the phosphorylation site of Thr229. AA range:195-244
<b>Specificity</b>	Phospho-p70 S6 kinase $\alpha$ (T229) Polyclonal Antibody detects endogenous levels of p70 S6 kinase $\alpha$ protein only when phosphorylated at T229.
<b>Formulation</b>	Liquid in PBS containing 50% glycerol, 0.5% BSA and 0.02% sodium azide.
<b>Source</b>	Polyclonal, Rabbit,IgG
<b>Purification</b>	The antibody was affinity-purified from rabbit antiserum by affinity-chromatography using epitope-specific immunogen.
<b>Dilution</b>	Western Blot: 1/500 - 1/2000. Immunohistochemistry: 1/100 - 1/300. Immunofluorescence: 1/200 - 1/1000. ELISA: 1/5000. Not yet tested in other applications.
<b>Concentration</b>	1 mg/ml
<b>Purity</b>	$\geq 90\%$
<b>Storage Stability</b>	-20°C/1 year
<b>Synonyms</b>	RPS6KB1; STK14A; Ribosomal protein S6 kinase beta-1; S6K-beta-1; S6K1; 70 kDa ribosomal protein S6 kinase 1; P70S6K1; p70-S6K 1; Ribosomal protein S6 kinase I; Serine/threonine-protein kinase 14A; p70 ribosomal S6 kinase alpha; p70 S6 kinas
<b>Observed Band</b>	60kD
<b>Cell Pathway</b>	Cell junction, synapse, synaptosome . Mitochondrion outer membrane. Mitochondrion. Colocalizes with UR11 at mitochondrion.; [Isoform Alpha I]: Nucleus. Cytoplasm.; [Isoform Alpha II]: Cytoplasm.
<b>Tissue Specificity</b>	Widely expressed.
<b>Function</b>	catalytic activity:ATP + a protein = ADP + a phosphoprotein..enzyme regulation:Activation by serine/threonine phosphorylation and protein kinase C, inactivated by type 2A phosphatase..function:Phosphorylates specifically

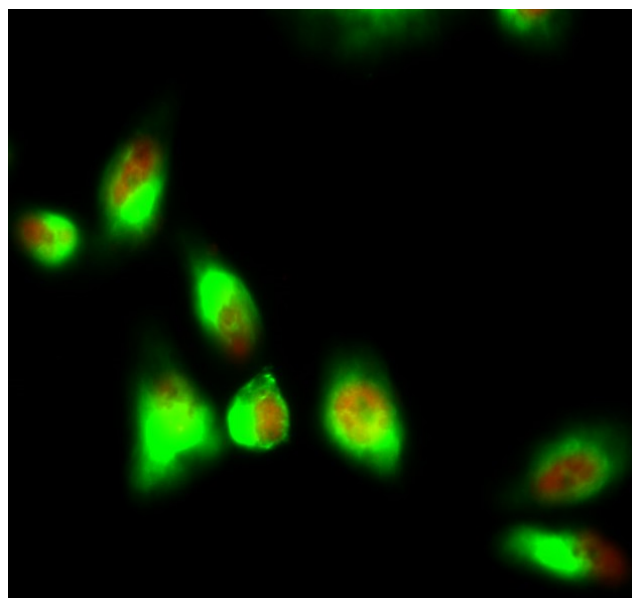
**Nanjing BYabs science technology Co.,Ltd**



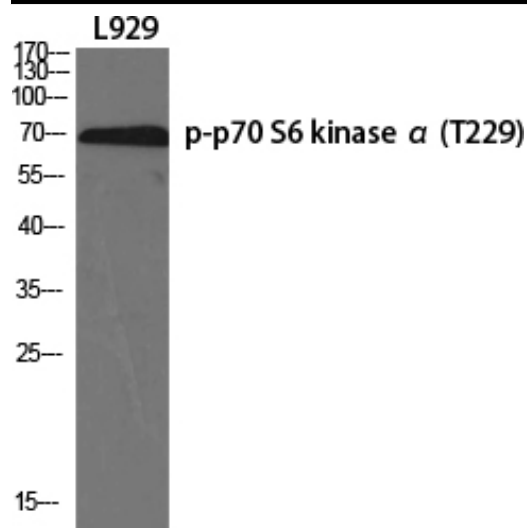
	ribosomal protein S6 in response to insulin or several classes of mitogens.,similarity:Belongs to the protein kinase superfamily.,similarity:Belongs to the protein kinase superfamily. AGC Ser/Thr protein kinase family. S6 kinase subfamily.,similarity:Contains 1 AGC-kinase C-terminal domain.,similarity:Contains 1 protein kinase domain.,subunit:Interacts with PPP1R9A/neurabin-1.,tissue specificity:Widely expressed.,
Background	ribosomal protein S6 kinase B1(RPS6KB1) Homo sapiens This gene encodes a member of the ribosomal S6 kinase family of serine/threonine kinases. The encoded protein responds to mTOR (mammalian target of rapamycin) signaling to promote protein synthesis, cell growth, and cell proliferation. Activity of this gene has been associated with human cancer. Alternatively spliced transcript variants have been observed. The use of alternative translation start sites results in isoforms with longer or shorter N-termini which may differ in their subcellular localizations. There are two pseudogenes for this gene on chromosome 17. [provided by RefSeq, Jan 2013],
matters needing attention	Avoid repeated freezing and thawing!
Usage suggestions	This product can be used in immunological reaction related experiments. For more information, please consult technical personnel.



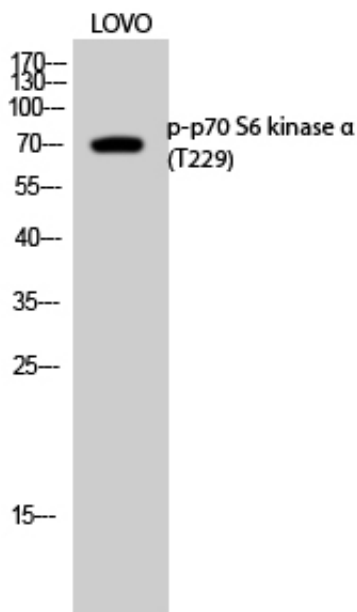
## Products Images



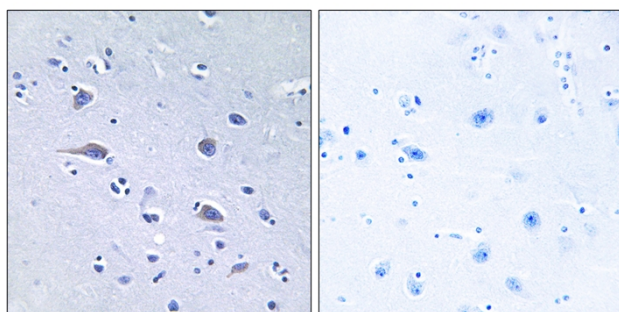
Immunofluorescence analysis of HeLa cell. 1, p70 S6 kinase  $\alpha$  (phospho Thr229) Polyclonal Antibody (red) was diluted at 1:200 (4° overnight). Caspase-8 Monoclonal Antibody (2G12) (green) was diluted at 1:200 (4° overnight). 2, Goat Anti Rabbit Alexa Fluor 594 Catalog: RS3611 was diluted at 1:1000 (room temperature, 50min). Goat Anti Mouse Alexa Fluor 488 Catalog: RS3208 was diluted at 1:1000 (room temperature, 50min).



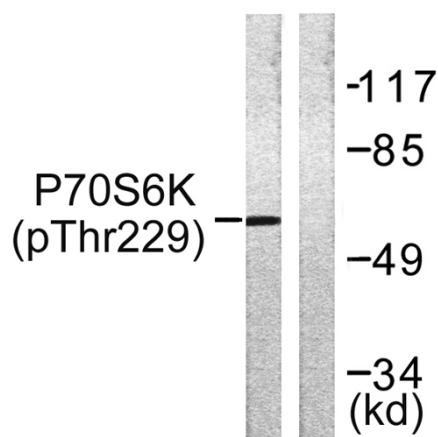
Western Blot analysis of various cells using Phospho-p70 S6 kinase  $\alpha$  (T229) Polyclonal Antibody diluted at 1:500



Western Blot analysis of LOVO cells using  
Phospho-p70 S6 kinase  $\alpha$  (T229) Polyclonal Antibody  
diluted at 1:500



Immunohistochemistry analysis of paraffin-embedded  
human brain, using p70 S6 Kinase (Phospho-Thr229)  
Antibody. The picture on the right is blocked with the  
phospho peptide.



Western blot analysis of lysates from Jurkat cells, using  
p70 S6 Kinase (Phospho-Thr229) Antibody. The lane  
on the right is blocked with the phospho peptide.