



Akt2 (phospho Ser474) Polyclonal Antibody

Catalog No	BYab-14295
Isotype	IgG
Reactivity	Human;Mouse;Rat
Applications	WB;IHC;IF;ELISA
Gene Name	AKT2
Protein Name	RAC-beta serine/threonine-protein kinase
Immunogen	The antiserum was produced against synthesized peptide derived from human Akt2 around the phosphorylation site of Ser474. AA range:432-481
Specificity	Phospho-Akt2 (S474) Polyclonal Antibody detects endogenous levels of Akt2 protein only when phosphorylated at S474.
Formulation	Liquid in PBS containing 50% glycerol, 0.5% BSA and 0.02% sodium azide.
Source	Polyclonal, Rabbit,IgG
Purification	The antibody was affinity-purified from rabbit antiserum by affinity-chromatography using epitope-specific immunogen.
Dilution	WB: 1/500 - 1/2000. IHC: 1/100 - 1/300. ELISA: 1/20000.. IF 1:50-200
Concentration	1 mg/ml
Purity	≥90%
Storage Stability	-20°C/1 year
Synonyms	AKT2; RAC-beta serine/threonine-protein kinase; Protein kinase Akt-2; Protein kinase B beta; PKB beta; RAC-PK-beta
Observed Band	56kD
Cell Pathway	Cytoplasm. Nucleus. Cell membrane; Peripheral membrane protein. Early endosome . Localizes within both nucleus and cytoplasm of proliferative primary myoblasts and mostly within the nucleus of differentiated primary myoblasts. By virtue of the N-terminal PH domain, is recruited to sites of the plasma membrane containing increased PI(3,4,5)P3 or PI(3,4)P2, cell membrane targeting is also facilitated by interaction with CLIP3. Colocalizes with WDFY2 in early endosomes (By similarity). .
Tissue Specificity	Expressed in all cell types so far analyzed.
Function	catalytic activity:ATP + a protein = ADP + a phosphoprotein.,disease:Alterations of AKT2 may contribute to the pathogenesis of ovarian carcinomas.,enzyme regulation:Two specific sites, one in the kinase domain (Thr-309) and the other in the C-terminal regulatory region (Ser-474), need to be phosphorylated for its full activation.,function:General protein kinase capable of phosphorylating several

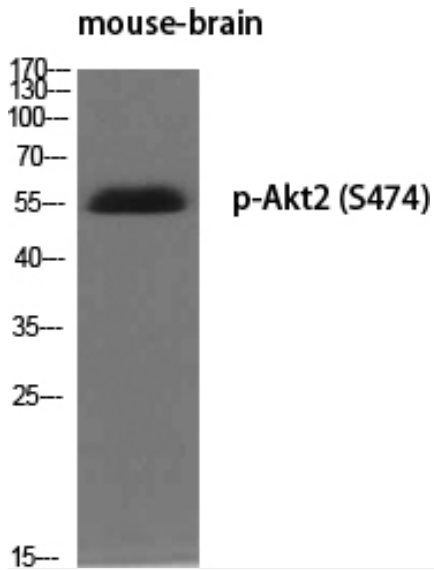
Nanjing BYabscience technology Co.,Ltd



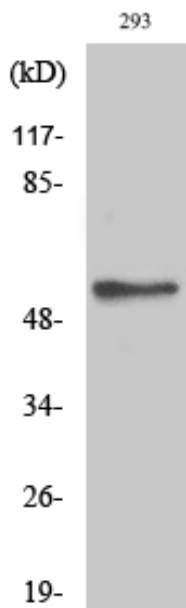
	known proteins.,similarity:Belongs to the protein kinase superfamily.,similarity:Belongs to the protein kinase superfamily. AGC Ser/Thr protein kinase family. RAC subfamily.,similarity:Contains 1 AGC-kinase C-terminal domain.,similarity:Contains 1 PH domain.,similarity:Contains 1 protein kinase domain.,subunit:Interacts (via PH domain) with MTCP1, TCL1A AND TCL1B.,tissue specificity:In all human cell types so far analyzed.,
Background	This gene is a putative oncogene encoding a protein belonging to a subfamily of serine/threonine kinases containing SH2-like (Src homology 2-like) domains. The gene was shown to be amplified and overexpressed in 2 of 8 ovarian carcinoma cell lines and 2 of 15 primary ovarian tumors. Overexpression contributes to the malignant phenotype of a subset of human ductal pancreatic cancers. The encoded protein is a general protein kinase capable of phosphorylating several known proteins. [provided by RefSeq, Jul 2008],
matters needing attention	Avoid repeated freezing and thawing!
Usage suggestions	This product can be used in immunological reaction related experiments. For more information, please consult technical personnel.



Products Images



Western Blot analysis of various cells using Phospho-Akt2 (S474) Polyclonal Antibody diluted at 1:500



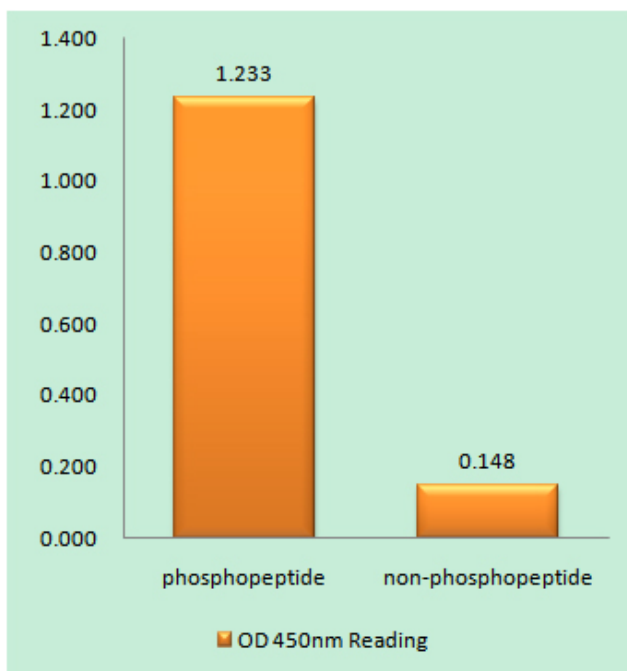
Western Blot analysis of 293 cells using Phospho-Akt2 (S474) Polyclonal Antibody diluted at 1:500

Nanjing BYabs science technology Co.,Ltd

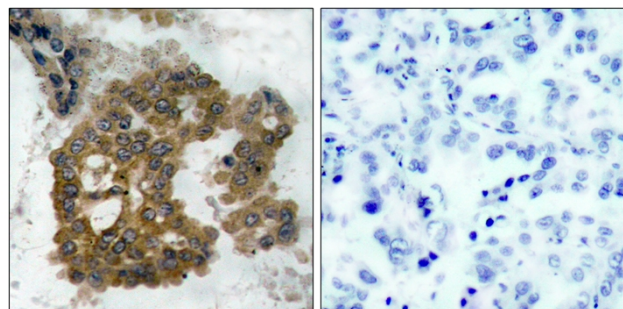
网址: www.njbybio.com

官方热线: 025-5229-8998

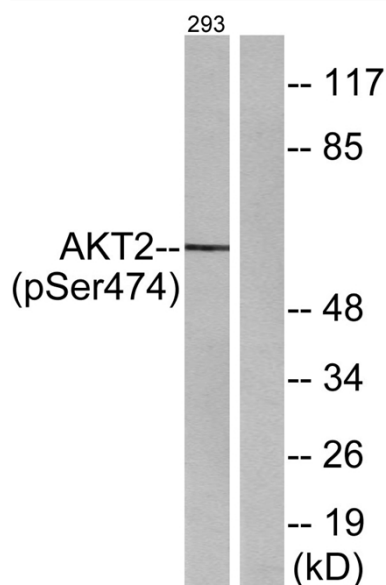
监督电话: 15950492658



Enzyme-Linked Immunosorbent Assay (Phospho-ELISA) for Immunogen Phosphopeptide (Phospho-left) and Non-Phosphopeptide (Phospho-right), using Akt2 (Phospho-Ser474) Antibody



Immunohistochemistry analysis of paraffin-embedded human lung carcinoma, using Akt2 (Phospho-Ser474) Antibody. The picture on the right is blocked with the phospho peptide.



Western blot analysis of lysates from 293 cells treated with EGF 200ng/ml 30', using Akt2 (Phospho-Ser474) Antibody. The lane on the right is blocked with the phospho peptide.