



Akt3 Polyclonal Antibody

Catalog No	BYab-14289
Isotype	IgG
Reactivity	Human;Mouse;Rat
Applications	WB
Gene Name	AKT3
Protein Name	RAC-gamma serine/threonine-protein kinase
Immunogen	Recombinant Protein of RAC-gamma serine/threonine-protein kinase
Specificity	The antibody detects endogenous Akt3 protein.
Formulation	PBS, pH 7.4, containing 0.5%BSA, 0.02% sodium azide as Preservative and 50% Glycerol.
Source	Polyclonal, Rabbit,IgG
Purification	The antibody was affinity-purified from rabbit antiserum by affinity-chromatography using specific immunogen.
Dilution	WB: 1:1000-2000
Concentration	1 mg/ml
Purity	≥90%
Storage Stability	-20°C/1 year
Synonyms	AKT3; PKBG; RAC-gamma serine/threonine-protein kinase; Protein kinase Akt-3; Protein kinase B gamma; PKB gamma; RAC-PK-gamma; STK-2
Observed Band	56kD
Cell Pathway	Nucleus . Cytoplasm . Membrane ; Peripheral membrane protein . Membrane-associated after cell stimulation leading to its translocation.
Tissue Specificity	In adult tissues, it is highly expressed in brain, lung and kidney, but weakly in heart, testis and liver. In fetal tissues, it is highly expressed in heart, liver and brain and not at all in kidney.
Function	catalytic activity:ATP + a protein = ADP + a phosphoprotein.,domain:Binding of the PH domain to the phosphatidylinositol 3-kinase alpha (PI(3)K) results in its targeting to the plasma membrane.,enzyme regulation:Two specific sites, one in the kinase domain (Thr-305) and the other in the C-terminal regulatory region (Ser-472), need to be phosphorylated for its full activation.,function:IGF-1 leads to the activation of AKT3, which may play a role in regulating cell survival. Capable of phosphorylating several known proteins. Truncated isoform 2/PKB gamma 1 without the second serine phosphorylation site could still be stimulated but to a lesser extent.,PTM:Phosphorylated upon DNA damage, probably by ATM or

Nanjing BYabscience technology Co.,Ltd



ATR.,similarity:Belongs to the protein kinase superfamily.,similarity:Belongs to the protein kinase superfamily. AGC Ser/Thr protein kinase family. RAC subfamily.,similarity:Contains 1 AG

Background

The protein encoded by this gene is a member of the AKT, also called PKB, serine/threonine protein kinase family. AKT kinases are known to be regulators of cell signaling in response to insulin and growth factors. They are involved in a wide variety of biological processes including cell proliferation, differentiation, apoptosis, tumorigenesis, as well as glycogen synthesis and glucose uptake. This kinase has been shown to be stimulated by platelet-derived growth factor (PDGF), insulin, and insulin-like growth factor 1 (IGF1). Alternatively splice transcript variants encoding distinct isoforms have been described. [provided by RefSeq, Jul 2008],

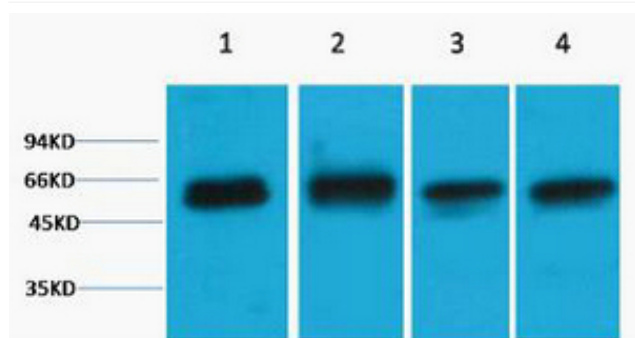
matters needing attention

Avoid repeated freezing and thawing!

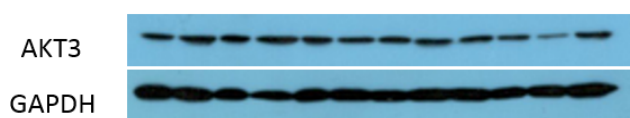
Usage suggestions

This product can be used in immunological reaction related experiments. For more information, please consult technical personnel.

Products Images



Western blot analysis of 1) Hela, 2) 3T3, 3) Mouse Brain, 4) Rat Brain tissue, diluted at 1:2000. Secondary antibody(catalog#:RS0002) was diluted at 1:20000



The picture was kindly provided by our customer. Primary antibody was diluted at 1:5000. Loading control antibody was diluted at 1:20000

Nanjing BYabscience technology Co.,Ltd

网址: www.njbybio.com

官方热线: 025-5229-8998

监督电话: 15950492658