



CD16 Polyclonal Antibody

Catalog No	BYab-14102
Isotype	IgG
Reactivity	Human;Rat;Mouse;
Applications	IHC;IF;ELISA
Gene Name	FCGR3A CD16A FCG3 FCGR3 IGFR3 FCGR3B CD16B FCG3 FCGR3 IGFR3
Protein Name	Low affinity immunoglobulin gamma Fc region receptor III-A/B (CD16a/b antigen) (Fc-gamma RIII-alpha/beta) (Fc-gamma RIII) (Fc-gamma RIIIa) (FcRIII) (FcRIIIa) (FcR-10) (IgG Fc receptor III-2) (CD antig
Immunogen	Synthetic peptide from human protein at AA range: 100-150
Specificity	The antibody detects endogenous CD16
Formulation	Liquid in PBS containing 50% glycerol, 0.5% BSA and 0.02% sodium azide.
Source	Polyclonal, Rabbit,IgG
Purification	The antibody was affinity-purified from rabbit antiserum by affinity-chromatography using epitope-specific immunogen.
Dilution	IHC-p 1:50-200, ELISA 1:10000-20000. IF 1:50-200
Concentration	1 mg/ml
Purity	≥90%
Storage Stability	-20°C/1 year
Synonyms	
Observed Band	
Cell Pathway	Cell membrane ; Single-pass type I membrane protein . Secreted . Exists also as a soluble receptor. .
Tissue Specificity	Expressed in natural killer cells (at protein level) (PubMed:2526846). Expressed in a subset of circulating monocytes (at protein level) (PubMed:27670158).
Function	function:Receptor for the Fc region of IgG. Binds complexed or aggregated IgG and also monomeric IgG. Mediates antibody-dependent cellular cytotoxicity (ADCC) and other antibody-dependent responses, such as phagocytosis.,miscellaneous:Encoded by one of two nearly identical genes: FCGR3A (Shown here) and FCGR3B which are expressed in a tissue-specific manner. The Phe-203 in III-A determines the transmembrane domains whereas the Ser-203 in III-B determines the GPI-anchoring.,online information:FCGR3A mutation db,polymorphism:Isoform Val-157 shows a higher binding capacity of IgG1, IgG3 and IgG4 compared with isoform Phe-157. Alleles Leu-66 and Phe-157, and alleles His-66 / Arg-66 and Val-157 are in linkage

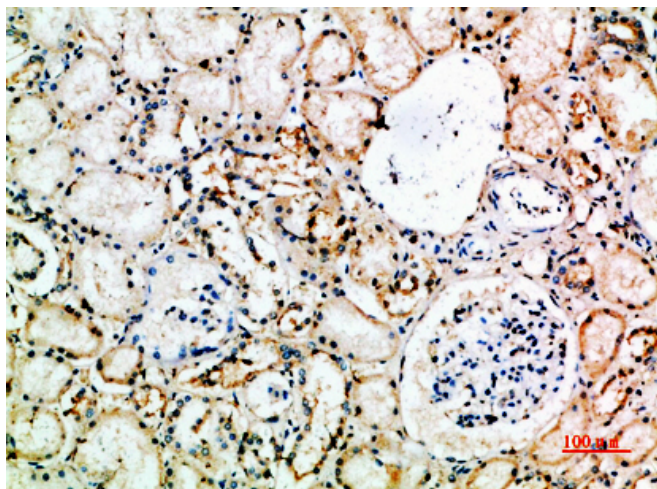
Nanjing BYabscience technology Co.,Ltd



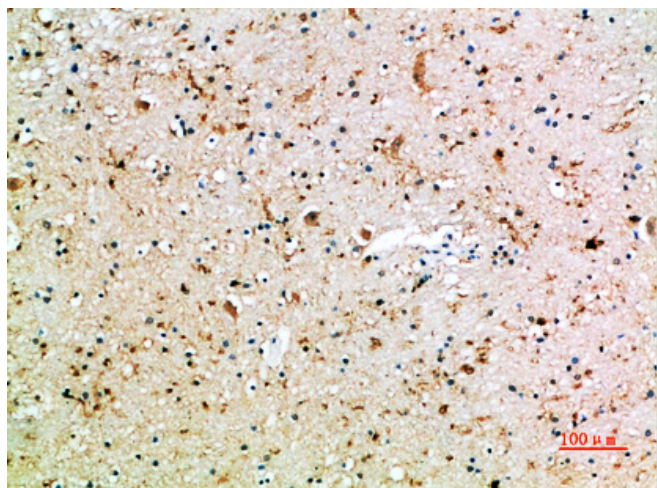
	desequilibrium.,PTM:Glycosylated. Contains high mannose- and complex-type oligosaccharides.,PTM:The soluble form is produced by a proteolytic cleavage.,similarity:Contains 2 Ig-like C2-
Background	This gene encodes a receptor for the Fc portion of immunoglobulin G, and it is involved in the removal of antigen-antibody complexes from the circulation, as well as other other antibody-dependent responses. This gene (FCGR3A) is highly similar to another nearby gene (FCGR3B) located on chromosome 1. The receptor encoded by this gene is expressed on natural killer (NK) cells as an integral membrane glycoprotein anchored through a transmembrane peptide, whereas FCGR3B is expressed on polymorphonuclear neutrophils (PMN) where the receptor is anchored through a phosphatidylinositol (PI) linkage. Mutations in this gene have been linked to susceptibility to recurrent viral infections, susceptibility to systemic lupus erythematosus, and alloimmune neonatal neutropenia. Alternatively spliced transcript variants encoding different isoforms have been found for this gene. [provided by RefSeq,
matters needing attention	Avoid repeated freezing and thawing!
Usage suggestions	This product can be used in immunological reaction related experiments. For more information, please consult technical personnel.



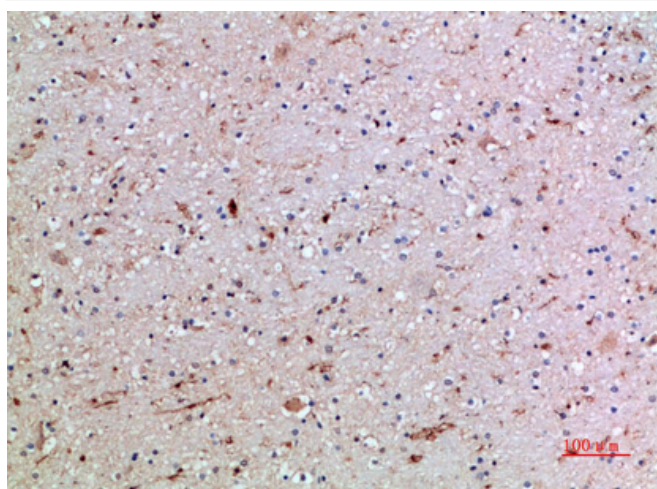
Products Images



Immunohistochemical analysis of paraffin-embedded human-kidney, antibody was diluted at 1:200



Immunohistochemical analysis of paraffin-embedded human-brain, antibody was diluted at 1:200



Immunohistochemical analysis of paraffin-embedded human-brain, antibody was diluted at 1:200

Nanjing BYabs science technology Co.,Ltd

网址: www.njbybio.com

官方热线: 025-5229-8998

监督电话: 15950492658