



DC-LAMP Polyclonal Antibody

Catalog No	BYab-14101
Isotype	IgG
Reactivity	Human;Rat;Mouse;
Applications	WB;IHC;IF;ELISA
Gene Name	LAMP3 DCLAMP TSC403
Protein Name	Lysosome-associated membrane glycoprotein 3 (LAMP-3) (Lysosomal-associated membrane protein 3) (DC-lysosome-associated membrane glycoprotein) (DC LAMP) (Protein TSC403) (CD antigen CD208)
Immunogen	Synthetic peptide from human protein at AA range: 261-310
Specificity	The antibody detects endogenous DC-LAMP
Formulation	Liquid in PBS containing 50% glycerol, 0.5% BSA and 0.02% sodium azide.
Source	Polyclonal, Rabbit,IgG
Purification	The antibody was affinity-purified from rabbit antiserum by affinity-chromatography using epitope-specific immunogen.
Dilution	WB 1:500-2000,IHC-p 1:500-200, ELISA 1:10000-20000. IF 1:50-200
Concentration	1 mg/ml
Purity	≥90%
Storage Stability	-20°C/1 year
Synonyms	Lysosome-associated membrane glycoprotein 3 (LAMP-3;Lysosomal-associated membrane protein 3;DC-lysosome-associated membrane glycoprotein;DC LAMP;Protein TSC403;CD antigen CD208)
Observed Band	44kD
Cell Pathway	Cell surface . Lysosome membrane ; Single-pass type I membrane protein . Cytoplasmic vesicle membrane ; Single-pass type I membrane protein . Early endosome membrane ; Single-pass type I membrane protein . During dendritic cell maturation, detected on cytoplasmic vesicles (the MHC II compartment) that contain MHC II proteins, LAMP1, LAMP2 and LAMP3 (PubMed:9768752). Detected on lysosomes in mature dendritic cells (PubMed:9768752). .
Tissue Specificity	Detected in tonsil interdigitating dendritic cells, in spleen, lymph node, Peyer's patches in the small intestine, in thymus medulla and in B-cells (at protein level). Expressed in lymphoid organs and dendritic cells. Expressed in lung. Up-regulated in carcinomas of the esophagus, colon, rectum, ureter, stomach, breast, fallopian tube, thyroid and parotid tissues.

Nanjing BYabscience technology Co.,Ltd

网址: www.njbybio.com

官方热线: 025-5229-8998

监督电话: 15950492658



Function	function:Might change the lysosome function after the transfer of peptide-MHC class II molecules to the surface of dendritic cells.,similarity:Belongs to the LAMP family.,tissue specificity:Expressed in lymphoid organs and dendritic cells. Expressed in lung. Up-regulated in carcinomas of the esophagus, colon, rectum, ureter, stomach, breast, fallopian tube, thyroid and parotid tissues.,
Background	Dendritic cells (DCs) are the most potent antigen-presenting cells. Immature DCs efficiently capture antigens and differentiate into interdigitating dendritic cells (IDCs) in lymphoid tissues that induce primary T-cell responses (summary by de Saint-Vis et al., 1998 [PubMed 9768752]).[supplied by OMIM, Dec 2010],
matters needing attention	Avoid repeated freezing and thawing!
Usage suggestions	This product can be used in immunological reaction related experiments. For more information, please consult technical personnel.

Nanjing BYabscience technology Co.,Ltd

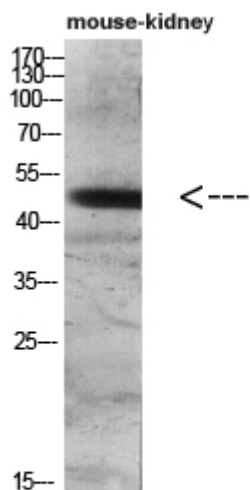
网址: www.njbybio.com

官方热线: 025-5229-8998

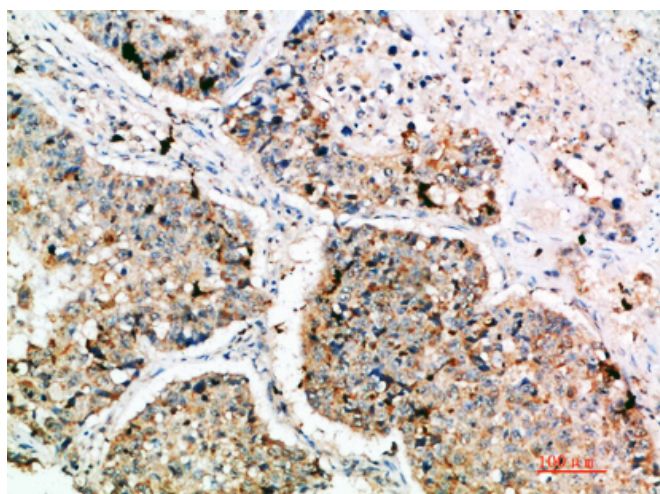
监督电话: 15950492658



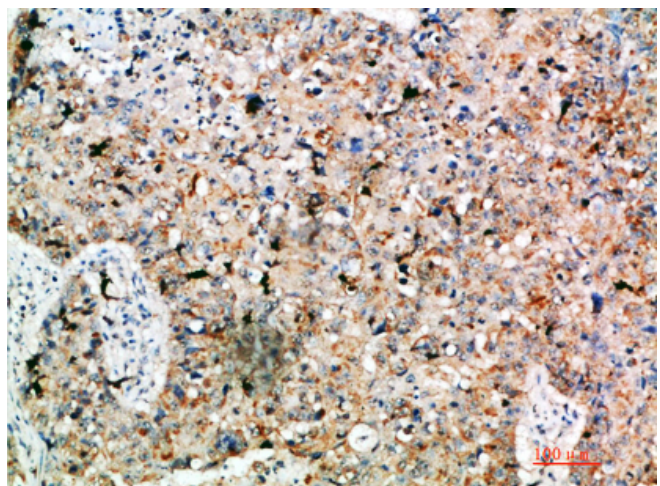
Products Images



Western blot analysis of mouse-lung mouse-heart
293T Hela 3T3 lysate, antibody was diluted at 500.
Secondary antibody(catalog#:RS0002) was diluted at
1:20000



Immunohistochemical analysis of paraffin-embedded
human-lung-cancer, antibody was diluted at 1:200



Immunohistochemical analysis of paraffin-embedded
human-lung-cancer, antibody was diluted at 1:200

Nanjing BYabs science technology Co.,Ltd

网址: www.njbybio.com

官方热线: 025-5229-8998

监督电话: 15950492658



Nanjing BYabscience technology Co.,Ltd

网址: www.njbybio.com

官方热线: 025-5229-8998

监督电话: 15950492658