



# NKp44 Polyclonal Antibody

<b>Catalog No</b>	BYab-14037
<b>Isotype</b>	IgG
<b>Reactivity</b>	Human;Rat;Mouse;
<b>Applications</b>	WB;IHC;IF;ELISA
<b>Gene Name</b>	NCR2
<b>Protein Name</b>	Natural cytotoxicity triggering receptor 2
<b>Immunogen</b>	The antiserum was produced against synthesized peptide derived from the Internal region of human NCR2. AA range:61-110
<b>Specificity</b>	NKp44 Polyclonal Antibody detects endogenous levels of NKp44 protein.
<b>Formulation</b>	Liquid in PBS containing 50% glycerol, 0.5% BSA and 0.02% sodium azide.
<b>Source</b>	Polyclonal, Rabbit,IgG
<b>Purification</b>	The antibody was affinity-purified from rabbit antiserum by affinity-chromatography using epitope-specific immunogen.
<b>Dilution</b>	WB: 1/500 - 1/2000. IHC-p: 1/100-1/300. ELISA: 1/20000.. IF 1:50-200
<b>Concentration</b>	1 mg/ml
<b>Purity</b>	≥90%
<b>Storage Stability</b>	-20°C/1 year
<b>Synonyms</b>	NCR2; LY95; Natural cytotoxicity triggering receptor 2; Lymphocyte antigen 95 homolog; NK cell-activating receptor; Natural killer cell p44-related protein; NK-p44; NKp44; CD336
<b>Observed Band</b>	44kD
<b>Cell Pathway</b>	Cell membrane ; Single-pass type I membrane protein .
<b>Tissue Specificity</b>	Selectively expressed by activated NK cells and by in vitro cultured (i.e. activated) TCRg/d lymphoid cells.
<b>Function</b>	function:Cytotoxicity-activating receptor that may contribute to the increased efficiency of activated natural killer (NK) cells to mediate tumor cell lysis.,similarity:Belongs to the natural cytotoxicity receptor (NCR) family.,similarity:Contains 1 Ig-like (immunoglobulin-like) domain.,subunit:Interacts with TYROBP/DAP12.,tissue specificity:Selectively expressed by activated NK cells and by in vitro cultured (i.e. activated) TCRg/d lymphoid cells.,

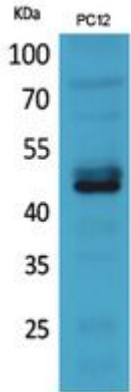
**Nanjing BYabscience technology Co.,Ltd**



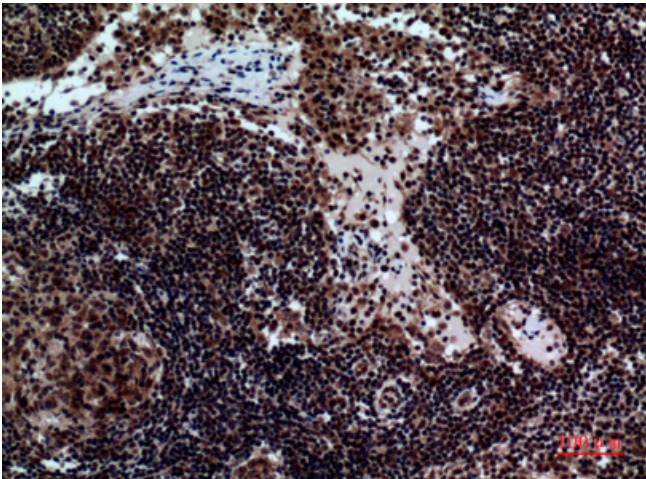
Background	function:Cytotoxicity-activating receptor that may contribute to the increased efficiency of activated natural killer (NK) cells to mediate tumor cell lysis.,similarity:Belongs to the natural cytotoxicity receptor (NCR) family.,similarity:Contains 1 Ig-like (immunoglobulin-like) domain.,subunit:Interacts with TYROBP/DAP12.,tissue specificity:Selectively expressed by activated NK cells and by in vitro cultured (i.e. activated) TCRg/d lymphoid cells.,
matters needing attention	Avoid repeated freezing and thawing!
Usage suggestions	This product can be used in immunological reaction related experiments. For more information, please consult technical personnel.



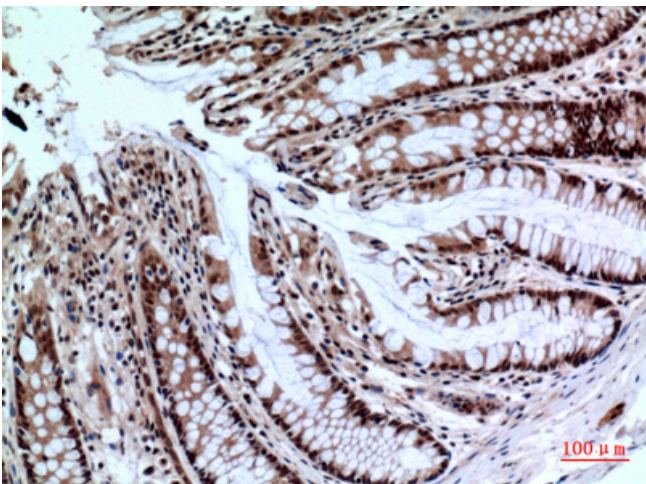
## Products Images



Western Blot analysis of PC-12 cells using NKp44 Polyclonal Antibody. Secondary antibody(catalog#:RS0002) was diluted at 1:20000



Immunohistochemical analysis of paraffin-embedded human-Lymph-nodes, antibody was diluted at 1:100



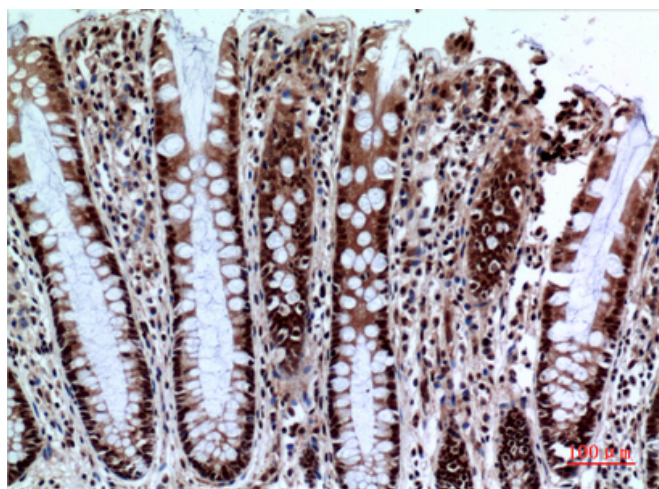
Immunohistochemical analysis of paraffin-embedded human-colon, antibody was diluted at 1:100

**Nanjing BYabs science technology Co.,Ltd**

网址: [www.njbybio.com](http://www.njbybio.com)

官方热线: 025-5229-8998

监督电话: 15950492658



Immunohistochemical analysis of paraffin-embedded human-colon, antibody was diluted at 1:100