



SLAM Polyclonal Antibody

Catalog No	BYab-14008
Isotype	IgG
Reactivity	Human;Rat;Mouse;
Applications	WB;IHC;IF;ELISA
Gene Name	SLAMF1
Protein Name	Signaling lymphocytic activation molecule
Immunogen	The antiserum was produced against synthesized peptide derived from the Internal region of human SLAMF1. AA range:81-130
Specificity	SLAM Polyclonal Antibody detects endogenous levels of SLAM protein.
Formulation	Liquid in PBS containing 50% glycerol, 0.5% BSA and 0.02% sodium azide.
Source	Polyclonal, Rabbit,IgG
Purification	The antibody was affinity-purified from rabbit antiserum by affinity-chromatography using epitope-specific immunogen.
Dilution	WB: 1/500 - 1/2000. IHC-p: 1:100-300 ELISA: 1/20000.. IF 1:50-200
Concentration	1 mg/ml
Purity	≥90%
Storage Stability	-20°C/1 year
Synonyms	SLAMF1; SLAM; Signaling lymphocytic activation molecule; CDw150; IPO-3; CD150
Observed Band	37kD
Cell Pathway	Cell membrane ; Single-pass type I membrane protein. Present on the surface of B-cells and T-cells. Located at the plasma membrane contacts between neighboring T-cells (PubMed:11806999). ; [Isoform 3]: Secreted .; [Isoform 4]: Cell membrane . Overexpressed isoform 4 is detected on the cell surface. In glioma cell lines endogenous isoform 4 is detected predominantly in the cytoplasm and colocalized with endoplasmic reticulum and Golgi markers. .
Tissue Specificity	Constitutively expressed on peripheral blood memory T-cells, T-cell clones, immature thymocytes and a proportion of B-cells, and is rapidly induced on naive T-cells after activation (PubMed:7617038). Activated B-cells express isoform 1, isoform 3 and a cytoplasmic isoform (PubMed:9091591). Isoform 4 is expressed in B-cells, primary T-cells, dendritic cells and macrophages. Isoform 4 is expressed in tumors of the central nervous system (PubMed:25710480).
Function	domain:The most membrane-proximal SH2-binding motif interacts with SH2 domain of SH2D1A and does not need to be phosphorylated on tyrosine

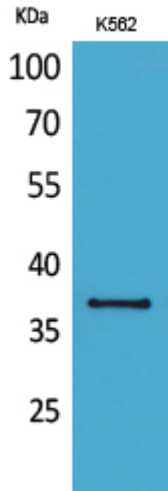
Nanjing BYabscience technology Co.,Ltd



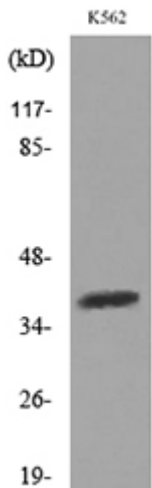
	<p>residues.,function:High-affinity self-ligand important in bidirectional T-cell to B-cell stimulation. SLAM-induced signal-transduction events in T-lymphocytes are different from those in B-cells. Two modes of SLAM signaling are likely to exist: one in which the inhibitor SH2D1A acts as a negative regulator and another in which protein-tyrosine phosphatase 2C (PTPN11)-dependent signal transduction operates.,PTM:Phosphorylated by FYN.,similarity:Contains 1 Ig-like C2-type (immunoglobulin-like) domain.,similarity:Contains 1 Ig-like V-type (immunoglobulin-like) domain.,subcellular location:Present on the surface of B-cells and T-cells.,subunit:Its cytoplasmic domain interacts with SH2 domain protein 1A (SH2D1A), and with PTPN11. Interacts with INPP5D/SHIP</p>
Background	<p>domain:The most membrane-proximal SH2-binding motif interacts with SH2 domain of SH2D1A and does not need to be phosphorylated on tyrosine residues.,function:High-affinity self-ligand important in bidirectional T-cell to B-cell stimulation. SLAM-induced signal-transduction events in T-lymphocytes are different from those in B-cells. Two modes of SLAM signaling are likely to exist: one in which the inhibitor SH2D1A acts as a negative regulator and another in which protein-tyrosine phosphatase 2C (PTPN11)-dependent signal transduction operates.,PTM:Phosphorylated by FYN.,similarity:Contains 1 Ig-like C2-type (immunoglobulin-like) domain.,similarity:Contains 1 Ig-like V-type (immunoglobulin-like) domain.,subcellular location:Present on the surface of B-cells and T-cells.,subunit:Its cytoplasmic domain interacts with SH2 domain protein 1A (SH2D1A), and with PTPN11. Interacts with INPP5D/SHIP1. Binds to Measles virus HN protein and acts as a receptor for this virus.,tissue specificity:Constitutively expressed on peripheral blood memory T-cells, T-cell clones, immature thymocytes, and a proportion of B-cells, and is rapidly induced on naive T-cells after activation.,</p>
matters needing attention	<p>Avoid repeated freezing and thawing!</p>
Usage suggestions	<p>This product can be used in immunological reaction related experiments. For more information, please consult technical personnel.</p>



Products Images



Western Blot analysis of K562 cells using SLAM Polyclonal Antibody. Secondary antibody(catalog#:RS0002) was diluted at 1:20000



Western blot analysis of lysate from K562 cells, using SLAMF1 Antibody.