



CD207 Polyclonal Antibody

Catalog No	BYab-14005
Isotype	IgG
Reactivity	Human;Rat;Mouse;
Applications	WB;ELISA
Gene Name	CD207
Protein Name	C-type lectin domain family 4 member K
Immunogen	The antiserum was produced against synthesized peptide derived from the Internal region of human CD207. AA range:61-110
Specificity	CD207 Polyclonal Antibody detects endogenous levels of CD207 protein.
Formulation	Liquid in PBS containing 50% glycerol, 0.5% BSA and 0.02% sodium azide.
Source	Polyclonal, Rabbit,IgG
Purification	The antibody was affinity-purified from rabbit antiserum by affinity-chromatography using epitope-specific immunogen.
Dilution	Western Blot: 1/500 - 1/2000. ELISA: 1/20000. Not yet tested in other applications.
Concentration	1 mg/ml
Purity	≥90%
Storage Stability	-20°C/1 year
Synonyms	CD207; CLEC4K; C-type lectin domain family 4 member K; Langerin; CD207
Observed Band	38kD
Cell Pathway	Membrane ; Single-pass type II membrane protein . Found in Birbeck granules (BGs), which are organelles consisting of superimposed and zippered membranes.
Tissue Specificity	Exclusively expressed by Langerhans cells. Expressed in astrocytoma and malignant ependymoma, but not in normal brain tissues.
Function	function:Calcium-dependent lectin displaying mannose-binding specificity, Induces the formation of Birbeck granules (BGs); is a potent regulator of membrane superimposition and zippering.,online information:Langerin,similarity:Contains 1 C-type lectin domain.,subcellular location:Found in Birbeck granules (BGs), which are organelles consisting of superimposed and zippered membranes.,tissue specificity:Exclusively expressed by Langerhans cells.,
Background	The protein encoded by this gene is expressed only in Langerhans cells which are immature dendritic cells of the epidermis and mucosa. It is localized in the

Nanjing BYabscience technology Co.,Ltd



Birbeck granules, organelles present in the cytoplasm of Langerhans cells and consisting of superimposed and zippered membranes. It is a C-type lectin with mannose binding specificity, and it has been proposed that mannose binding by this protein leads to internalization of antigen into Birbeck granules and providing access to a nonclassical antigen-processing pathway. Mutations in this gene result in Birbeck granules deficiency or loss of sugar binding activity. [provided by RefSeq, Aug 2010],

matters needing attention

Avoid repeated freezing and thawing!

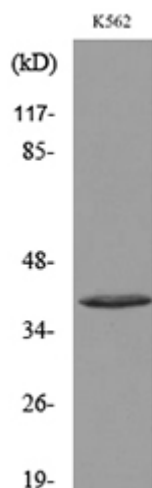
Usage suggestions

This product can be used in immunological reaction related experiments. For more information, please consult technical personnel.

Products Images



Western Blot analysis of K562 cells using CD207 Polyclonal Antibody. Secondary antibody(catalog#:RS0002) was diluted at 1:20000



Western blot analysis of lysate from K562 cells, using CD207 Antibody.

Nanjing BYabs science technology Co.,Ltd

网址: www.njbybio.com

官方热线: 025-5229-8998

监督电话: 15950492658