



NT5C1A Polyclonal Antibody

Catalog No	BYab-13954
Isotype	IgG
Reactivity	Human;Mouse
Applications	WB;IF;ELISA
Gene Name	NT5C1A
Protein Name	Cytosolic 5'-nucleotidase 1A
Immunogen	The antiserum was produced against synthesized peptide derived from human NT5C1A. AA range:151-200
Specificity	NT5C1A Polyclonal Antibody detects endogenous levels of NT5C1A protein.
Formulation	Liquid in PBS containing 50% glycerol, 0.5% BSA and 0.02% sodium azide.
Source	Polyclonal, Rabbit,IgG
Purification	The antibody was affinity-purified from rabbit antiserum by affinity-chromatography using epitope-specific immunogen.
Dilution	Western Blot: 1/500 - 1/2000. Immunofluorescence: 1/200 - 1/1000. ELISA: 1/20000. Not yet tested in other applications.
Concentration	1 mg/ml
Purity	≥90%
Storage Stability	-20°C/1 year
Synonyms	NT5C1A; Cytosolic 5'-nucleotidase 1A; cN1A; Cytosolic 5'-nucleotidase 1A; cN-1; cN-1A
Observed Band	41kD
Cell Pathway	Cytoplasm.
Tissue Specificity	Highly expressed in skeletal muscle. Detected at intermediate levels in heart, brain, kidney and pancreas.
Function	catalytic activity:A 5'-ribonucleotide + H ₂ O = a ribonucleoside + phosphate.,cofactor:Magnesium.,enzyme regulation:Activated by ADP.,function:Dephosphorylates the 5' and 2'(3')-phosphates of deoxyribonucleotides and has a broad substrate specificity. Helps to regulate adenosine levels in heart during ischemia and hypoxia.,similarity:Belongs to the 5'-nucleotidase type 3 family.,tissue specificity:Highly expressed in skeletal muscle. Detected at intermediate levels in heart, brain, kidney and pancreas.,
Background	Cytosolic nucleotidases, such as NT5C1A, dephosphorylate nucleoside monophosphates (Hunsucker et al., 2001 [PubMed 11133996]).[supplied by

Nanjing BYabscience technology Co.,Ltd



OMIM, Mar 2008],

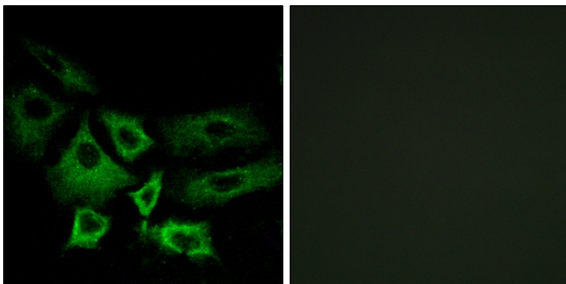
matters needing attention

Avoid repeated freezing and thawing!

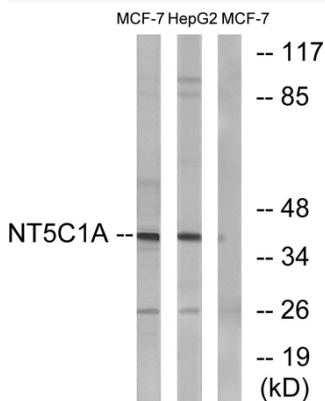
Usage suggestions

This product can be used in immunological reaction related experiments. For more information, please consult technical personnel.

Products Images



Immunofluorescence analysis of A549 cells, using NT5C1A Antibody. The picture on the right is blocked with the synthesized peptide.



Western blot analysis of lysates from MCF-7 and HepG2 cells, using NT5C1A Antibody. The lane on the right is blocked with the synthesized peptide.

Nanjing BYabscience technology Co.,Ltd

网址: www.njbybio.com

官方热线: 025-5229-8998

监督电话: 15950492658