



MASP-2 Polyclonal Antibody

Catalog No	BYab-13944
Isotype	IgG
Reactivity	Human;Rat;Mouse;
Applications	WB;ELISA
Gene Name	MASP2
Protein Name	Mannan-binding lectin serine protease 2
Immunogen	The antiserum was produced against synthesized peptide derived from human MASP2. AA range:227-276
Specificity	MASP-2 Polyclonal Antibody detects endogenous levels of MASP-2 protein.
Formulation	Liquid in PBS containing 50% glycerol, 0.5% BSA and 0.02% sodium azide.
Source	Polyclonal, Rabbit,IgG
Purification	The antibody was affinity-purified from rabbit antiserum by affinity-chromatography using epitope-specific immunogen.
Dilution	Western Blot: 1/500 - 1/2000. ELISA: 1/20000. Not yet tested in other applications.
Concentration	1 mg/ml
Purity	≥90%
Storage Stability	-20°C/1 year
Synonyms	MASP2; Mannan-binding lectin serine protease 2; MBL-associated serine protease 2; Mannose-binding protein-associated serine protease 2; MASP-2
Observed Band	75kD
Cell Pathway	Secreted.
Tissue Specificity	Plasma.
Function	catalytic activity:Selective cleavage after Arg-223 in complement component C2 (-Ser-Leu-Gly-Arg- -Lys-Ile-Gln-Ile) and after Arg-76 in complement component C4 (-Gly-Leu-Gln-Arg- -Ala-Leu-Glu-Ile).,disease:Genetic variation in MASP2 is the cause of MASP2 deficiency [MIM:605102]. It is associated with susceptibility to infections and with the development of immunologic disease.,function:Serum protease that plays an important role in the activation of the complement system via mannose-binding lectin. After activation by auto-catalytic cleavage it cleaves C2 and C4, leading to their activation and to the formation of C3 convertase.,miscellaneous:Dimerization and MBL2 binding requires calcium ions.,online information:MASP2 mutation db,PTM:Activated by cleavage after

Nanjing BYabscience technology Co.,Ltd



Arg-444. The uncleaved zymogen is inactive towards synthetic substrates, but has sufficient activity to effect autocatalytic cl

Background

mannan binding lectin serine peptidase 2(MASP2) Homo sapiens This gene encodes a member of the peptidase S1 family of serine proteases. The encoded preproprotein is proteolytically processed to generate A and B chains that heterodimerize to form the mature protease. This protease cleaves complement components C2 and C4 in order to generate C3 convertase in the lectin pathway of the complement system. The encoded protease also plays a role in the coagulation cascade through cleavage of prothrombin to form thrombin. Myocardial infarction and acute stroke patients exhibit reduced serum concentrations of the encoded protein. Alternative splicing results in multiple transcript variants, at least one of which encodes an isoform that is proteolytically processed. [provided by RefSeq, Feb 2016],

matters needing attention

Avoid repeated freezing and thawing!

Usage suggestions

This product can be used in immunological reaction related experiments. For more information, please consult technical personnel.

Nanjing BYabscience technology Co.,Ltd

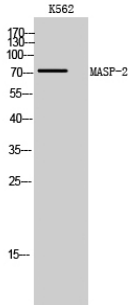
网址: www.njbybio.com

官方热线: 025-5229-8998

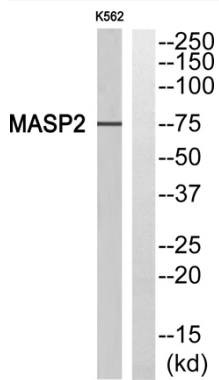
监督电话: 15950492658



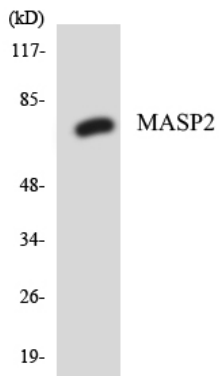
Products Images



Western Blot analysis of K562 cells using MASP-2 Polyclonal Antibody



Western blot analysis of MASP2 Antibody. The lane on the right is blocked with the MASP2 peptide.



Western blot analysis of the lysates from HT-29 cells using MASP2 antibody.