



# EMR1 Polyclonal Antibody

Catalog No	BYab-13920
Isotype	IgG
Reactivity	Human;Rat;Mouse;
Applications	WB;ELISA
Gene Name	EMR1
Protein Name	EGF-like module-containing mucin-like hormone receptor-like 1
Immunogen	The antiserum was produced against synthesized peptide derived from human EMR1. AA range:818-867
Specificity	EMR1 Polyclonal Antibody detects endogenous levels of EMR1 protein.
Formulation	Liquid in PBS containing 50% glycerol, 0.5% BSA and 0.02% sodium azide.
Source	Polyclonal, Rabbit,IgG
Purification	The antibody was affinity-purified from rabbit antiserum by affinity-chromatography using epitope-specific immunogen.
Dilution	Western Blot: 1/500 - 1/2000. ELISA: 1/5000. Not yet tested in other applications.
Concentration	1 mg/ml
Purity	≥90%
Storage Stability	-20°C/1 year
Synonyms	EMR1; TM7LN3; EGF-like module-containing mucin-like hormone receptor-like 1; EGF-like module receptor 1; EMR1 hormone receptor
Observed Band	98kD
Cell Pathway	Cell membrane ; Multi-pass membrane protein .
Tissue Specificity	Expression is restricted to eosinophils.
Function	alternative products:Comment=Additional isoforms seem to exist,function:Could be involved in cell-cell interactions.,similarity:Belongs to the G-protein coupled receptor 2 family. LN-TM7 subfamily.,similarity:Contains 1 GPS domain.,similarity:Contains 6 EGF-like domains.,tissue specificity:Wide expression; increased levels in peripheral blood mononuclear cells.,
Background	This gene encodes a protein that has a domain resembling seven transmembrane G protein-coupled hormone receptors (7TM receptors) at its C-terminus. The N-terminus of the encoded protein has six EGF-like modules, separated from the transmembrane segments by a serine/threonine-rich domain, a feature reminiscent of mucin-like, single-span, integral membrane glycoproteins

Nanjing BYabscience technology Co.,Ltd



with adhesive properties. Multiple alternatively spliced transcript variants encoding different isoforms have been found for this gene. [provided by RefSeq, Jan 2012],

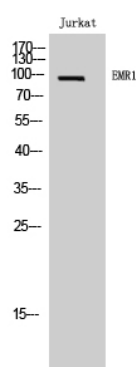
#### matters needing attention

Avoid repeated freezing and thawing!

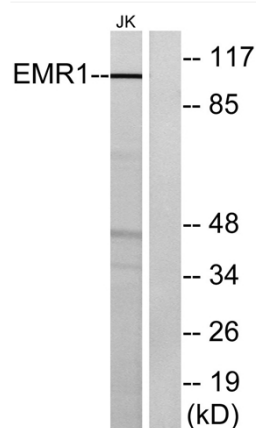
#### Usage suggestions

This product can be used in immunological reaction related experiments. For more information, please consult technical personnel.

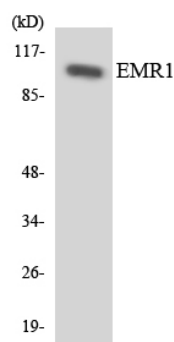
## Products Images



Western Blot analysis of Jurkat cells using EMR1 Polyclonal Antibody



Western blot analysis of lysates from Jurkat cells, using EMR1 Antibody. The lane on the right is blocked with the synthesized peptide.



Western blot analysis of the lysates from HUVEC cells using EMR1 antibody.

**Nanjing BYabscience technology Co.,Ltd**

网址: [www.njbybio.com](http://www.njbybio.com)

官方热线: 025-5229-8998

监督电话: 15950492658