



CD88 Polyclonal Antibody

Catalog No	BYab-13915
Isotype	IgG
Reactivity	Human;Rat;Mouse;
Applications	WB;IHC;IF;ELISA
Gene Name	C5AR1
Protein Name	C5a anaphylatoxin chemotactic receptor
Immunogen	The antiserum was produced against synthesized peptide derived from human N ternal CD88/C5aR. AA range:301-350
Specificity	CD88 Polyclonal Antibody detects endogenous levels of CD88 protein.
Formulation	Liquid in PBS containing 50% glycerol, 0.5% BSA and 0.02% sodium azide.
Source	Polyclonal, Rabbit,IgG
Purification	The antibody was affinity-purified from rabbit antiserum by affinity-chromatography using epitope-specific immunogen.
Dilution	Western Blot: 1/500 - 1/2000. Immunohistochemistry: 1/100 - 1/300. Immunofluorescence: 1/200 - 1/1000. ELISA: 1/5000. Not yet tested in other applications.
Concentration	1 mg/ml
Purity	≥90%
Storage Stability	-20°C/1 year
Synonyms	C5AR1; C5AR; C5R1; C5a anaphylatoxin chemotactic receptor; C5a-R; C5aR; CD antigen CD88
Observed Band	45kD
Cell Pathway	Cell membrane ; Multi-pass membrane protein . Cytoplasmic vesicle . Phosphorylated C5aR colocalizes with ARRB1 and ARRB2 in cytoplasmic vesicles. .
Tissue Specificity	Brain,
Function	function:Receptor for the chemotactic and inflammatory peptide anaphylatoxin C5a. This receptor stimulates chemotaxis, granule enzyme release and superoxide anion production.,PTM:Sulfation plays a critical role in the association of the receptor with C5a, but no significant role in the ability of the receptor to transduce a signal and mobilize calcium in response to a small peptide agonist.,similarity:Belongs to the G-protein coupled receptor 1 family.,

Nanjing BYabscience technology Co.,Ltd

网址: www.njbybio.com

官方热线: 025-5229-8998

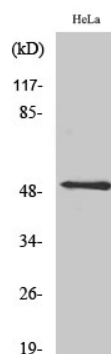
监督电话: 15950492658



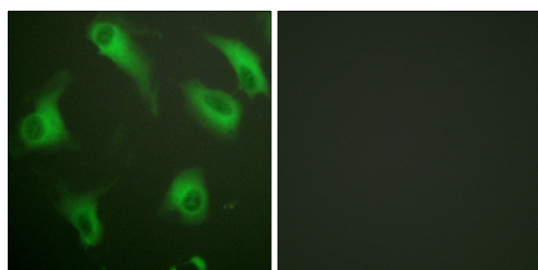
Background	function:Receptor for the chemotactic and inflammatory peptide anaphylatoxin C5a. This receptor stimulates chemotaxis, granule enzyme release and superoxide anion production.,PTM:Sulfation plays a critical role in the association of the receptor with C5a, but no significant role in the ability of the receptor to transduce a signal and mobilize calcium in response to a small peptide agonist.,similarity:Belongs to the G-protein coupled receptor 1 family.,
matters needing attention	Avoid repeated freezing and thawing!
Usage suggestions	This product can be used in immunological reaction related experiments. For more information, please consult technical personnel.



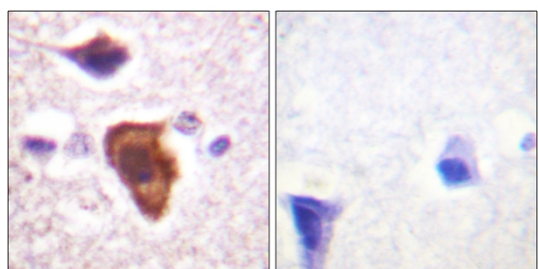
Products Images



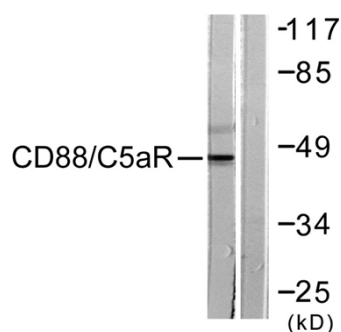
Western Blot analysis of various cells using CD88 Polyclonal Antibody



Immunofluorescence analysis of HeLa cells, using CD88/C5aR Antibody. The picture on the right is blocked with the synthesized peptide.



Immunohistochemistry analysis of paraffin-embedded human brain tissue, using CD88/C5aR Antibody. The picture on the right is blocked with the synthesized peptide.



Western blot analysis of lysates from HeLa cells, treated with PMA 125ng/ml 30', using CD88/C5aR Antibody. The lane on the right is blocked with the synthesized peptide.