



AVP Receptor V2 Polyclonal Antibody

Catalog No	BYab-13766
Isotype	IgG
Reactivity	Human;Mouse
Applications	WB;ELISA
Gene Name	AVPR2
Protein Name	AVP Receptor V2
Immunogen	Synthesized peptide derived from human AVP Receptor V2. at AA range: 1-50
Specificity	AVP Receptor V2 Polyclonal Antibody detects endogenous levels of AVP Receptor V2
Formulation	Liquid in PBS containing 50% glycerol, 0.5% BSA and 0.02% sodium azide.
Source	Polyclonal, Rabbit,IgG
Purification	The antibody was affinity-purified from rabbit antiserum by affinity-chromatography using epitope-specific immunogen.
Dilution	WB 1:500-2000, ELISA 1:10000-20000
Concentration	1 mg/ml
Purity	≥90%
Storage Stability	-20°C/1 year
Synonyms	Vasopressin V2 receptor (V2R) (AVPR V2) (Antidiuretic hormone receptor) (Renal-type arginine vasopressin receptor)
Observed Band	57kD
Cell Pathway	Cell membrane ; Multi-pass membrane protein .
Tissue Specificity	Kidney.
Function	disease:Defects in AVPR2 are the cause of diabetes insipidus nephrogenic X-linked (XNDI) [MIM:304800]; also known as diabetes insipidus nephrogenic type 1. XNDI is caused by the inability of the renal collecting ducts to absorb water in response to arginine vasopressin. It is characterized by excessive water drinking (polydypsia), excessive urine excretion (polyuria), persistent hypotonic urine, and hypokalemia.,disease:Defects in AVPR2 are the cause of nephrogenic syndrome of inappropriate antidiuresis (NSIAD) [MIM:300539]. This disorder is characterized by an inability to excrete a free water load, with inappropriately concentrated urine and resultant hyponatremia, hypoosmolarity, and natriuresis.,function:Receptor for arginine vasopressin. The activity of this receptor is mediated by G proteins which activate adenylate cyclase.,online

Nanjing BYabscience technology Co.,Ltd



information:AVPR2 pages,similarity:Belongs to the

Background

This gene encodes the vasopressin receptor, type 2, also known as the V2 receptor, which belongs to the seven-transmembrane-domain G protein-coupled receptor (GPCR) superfamily, and couples to Gs thus stimulating adenylate cyclase. The subfamily that includes the V2 receptor, the V1a and V1b vasopressin receptors, the oxytocin receptor, and isotocin and mesotocin receptors in non-mammals, is well conserved, though several members signal via other G proteins. All bind similar cyclic nonapeptide hormones. The V2 receptor is expressed in the kidney tubule, predominantly in the distal convoluted tubule and collecting ducts, where its primary property is to respond to the pituitary hormone arginine vasopressin (AVP) by stimulating mechanisms that concentrate the urine and maintain water homeostasis in the organism. When the function of this gene is lost, the disease Nephrogenic Diabetes Insipidus

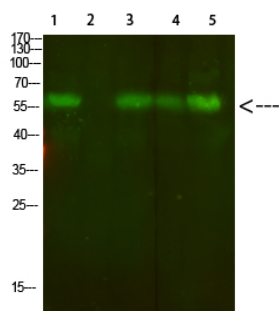
matters needing attention

Avoid repeated freezing and thawing!

Usage suggestions

This product can be used in immunological reaction related experiments. For more information, please consult technical personnel.

Products Images



Western Blot analysis of 1,mouse-lung 2,mouse-spleen 3,mouse-kidney 4,mouse-heart 5,293 cells using primary antibody diluted at 1:500(4°C overnight). Secondary antibody:Goat Anti-rabbit IgG IRDye 800(diluted at 1:5000, 25°C, 1 hour)

Nanjing BYabscience technology Co.,Ltd

网址: www.njbybio.com

官方热线: 025-5229-8998

监督电话: 15950492658