



IL-28R α Polyclonal Antibody

Catalog No	BYab-13715
Isotype	IgG
Reactivity	Human;Rat;Mouse;
Applications	WB;ELISA
Gene Name	IL28RA
Protein Name	Interleukin-28 receptor subunit alpha
Immunogen	Synthesized peptide derived from the Internal region of human IL-28R α .
Specificity	IL-28R α Polyclonal Antibody detects endogenous levels of IL-28R α protein.
Formulation	Liquid in PBS containing 50% glycerol, 0.5% BSA and 0.02% sodium azide.
Source	Polyclonal, Rabbit,IgG
Purification	The antibody was affinity-purified from rabbit antiserum by affinity-chromatography using epitope-specific immunogen.
Dilution	Western Blot: 1/500 - 1/2000. ELISA: 1/40000. Not yet tested in other applications.
Concentration	1 mg/ml
Purity	$\geq 90\%$
Storage Stability	-20°C/1 year
Synonyms	IL28RA; IFNLR1; LICR2; Interleukin-28 receptor subunit alpha; IL-28 receptor subunit alpha; IL-28R-alpha; IL-28RA; Cytokine receptor class-II member 12; Cytokine receptor family 2 member 12;CRF2-12; Interferon lambda receptor 1; IFN-lambda receptor 1; IFN-lambda-R1; Likely interleukin or cytokine receptor 2; LICR2
Observed Band	57kD
Cell Pathway	Membrane ; Single-pass type I membrane protein .
Tissue Specificity	Widely expressed.
Function	function:The IL28RA/IL10RB dimer is a receptor for IL28A, IL28B and IL29. The ligand/receptor complex seems to signal through the Jak-STAT pathway.,similarity:Belongs to the type II cytokine receptor family.,similarity:Contains 1 fibronectin type-III domain.,subunit:Heterodimer with IL10RB.,tissue specificity:Widely expressed.,

Nanjing BYabscience technology Co.,Ltd

**Background**

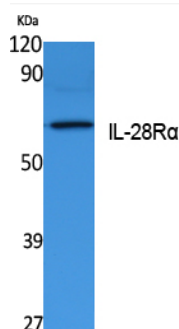
The protein encoded by this gene belongs to the class II cytokine receptor family. This protein forms a receptor complex with interleukine 10 receptor, beta (IL10RB). The receptor complex has been shown to interact with three closely related cytokines, including interleukin 28A (IL28A), interleukin 28B (IL28B), and interleukin 29 (IL29). The expression of all three cytokines can be induced by viral infection. The cells overexpressing this protein have been found to have enhanced responses to IL28A and IL29, but decreased response to IL28B. Three alternatively spliced transcript variants encoding distinct isoforms have been reported. [provided by RefSeq, Jul 2008],

matters needing attention

Avoid repeated freezing and thawing!

Usage suggestions

This product can be used in immunological reaction related experiments. For more information, please consult technical personnel.

Products Images

Western Blot analysis of extracts from K562 cells, using IL-28R α Polyclonal Antibody. Secondary antibody(catalog#:RS0002) was diluted at 1:20000