



# T2R49 Polyclonal Antibody

Catalog No	BYab-13687
Isotype	IgG
Reactivity	Human;Rat;Mouse;
Applications	WB;IF;ELISA
Gene Name	TAS2R20
Protein Name	Taste receptor type 2 member 20
Immunogen	The antiserum was produced against synthesized peptide derived from human TAS2R49. AA range:94-143
Specificity	T2R49 Polyclonal Antibody detects endogenous levels of T2R49 protein.
Formulation	Liquid in PBS containing 50% glycerol, 0.5% BSA and 0.02% sodium azide.
Source	Polyclonal, Rabbit,IgG
Purification	The antibody was affinity-purified from rabbit antiserum by affinity-chromatography using epitope-specific immunogen.
Dilution	Western Blot: 1/500 - 1/2000. Immunofluorescence: 1/200 - 1/1000. ELISA: 1/20000. Not yet tested in other applications.
Concentration	1 mg/ml
Purity	≥90%
Storage Stability	-20°C/1 year
Synonyms	TAS2R20; TAS2R49; Taste receptor type 2 member 20; Taste receptor type 2 member 49; T2R49; Taste receptor type 2 member 56; T2R56
Observed Band	38kD
Cell Pathway	Membrane; Multi-pass membrane protein.
Tissue Specificity	Expressed in subsets of taste receptor cells of the tongue and exclusively in gustducin-positive cells.
Function	function:Receptor that may play a role in the perception of bitterness and is gustducin-linked. May play a role in sensing the chemical composition of the gastrointestinal content. The activity of this receptor may stimulate alpha gustducin, mediate PLC-beta-2 activation and lead to the gating of TRPM5.,miscellaneous:Most taste cells may be activated by a limited number of bitter compounds; individual taste cells can discriminate among bitter stimuli.,similarity:Belongs to the G-protein coupled receptor T2R family.,tissue specificity:Expressed in subsets of taste receptor cells of the tongue and exclusively in gustducin-positive cells.,

Nanjing BYabscience technology Co.,Ltd



## Background

This gene encodes a member of the taste receptor two family of class C G-protein coupled receptors. Receptors of this family have a short extracellular N-terminus, seven transmembrane helices, three extracellular loops and three intracellular loops, and an intracellular C-terminus. Members of this family are expressed in a subset of taste receptor cells, where they function in bitter taste reception, as well as in non-gustatory cells including those of the brain, reproductive organs, respiratory system, and gastrointestinal system. This gene maps to the taste receptor gene cluster on chromosome 12p13. [provided by RefSeq, Jul 2016],

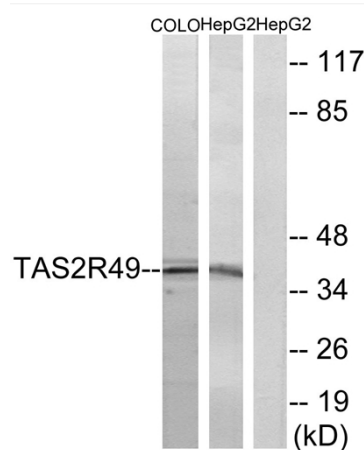
## matters needing attention

Avoid repeated freezing and thawing!

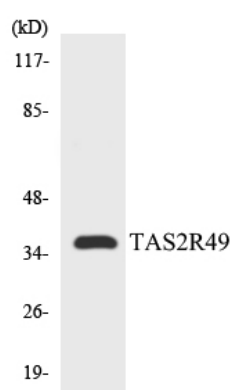
## Usage suggestions

This product can be used in immunological reaction related experiments. For more information, please consult technical personnel.

## Products Images



Western blot analysis of lysates from COLO and HepG2 cells, using TAS2R49 Antibody. The lane on the right is blocked with the synthesized peptide.



Western blot analysis of the lysates from COLO205 cells using TAS2R49 antibody.

**Nanjing BYabscience technology Co.,Ltd**