



Relaxin Receptor 3 Polyclonal Antibody

Catalog No	BYab-13668
Isotype	IgG
Reactivity	Human;Mouse;Rat
Applications	WB;IHC
Gene Name	RXFP3
Protein Name	Relaxin-3 receptor 1
Immunogen	The antiserum was produced against synthesized peptide derived from human RXFP3. AA range:161-210
Specificity	Relaxin Receptor 3 Polyclonal Antibody detects endogenous levels of Relaxin Receptor 3 protein.
Formulation	Liquid in PBS containing 50% glycerol, 0.5% BSA and 0.02% sodium azide.
Source	Polyclonal, Rabbit,IgG
Purification	The antibody was affinity-purified from rabbit antiserum by affinity-chromatography using epitope-specific immunogen.
Dilution	WB 1:500-2000;IHC-p 1:50-300
Concentration	1 mg/ml
Purity	≥90%
Storage Stability	-20°C/1 year
Synonyms	RXFP3; RLN3R1; SALPR; Relaxin-3 receptor 1; RLN3 receptor 1; G protein-coupled receptor SALPR; G-protein coupled receptor GPCR135; Relaxin family peptide receptor 3; Somatostatin- and angiotensin-like peptide receptor
Observed Band	51kD
Cell Pathway	Cell membrane; Multi-pass membrane protein.
Tissue Specificity	Expressed predominantly in brain regions. Highest expression in substantia nigra and pituitary, followed by hippocampus, spinal cord, amygdala, caudate nucleus and corpus callosum, quite low level in cerebellum. In peripheral tissues, relatively high levels in adrenal glands, low levels in pancreas, salivary gland, placenta, mammary gland and testis.
Function	function:Receptor for relaxin-3. Binding of the ligand inhibit cAMP accumulation.,similarity:Belongs to the G-protein coupled receptor 1 family.,tissue specificity:Expressed predominantly in brain regions. Highest expression in substantia nigra and pituitary, followed by hippocampus, spinal cord, amygdala, caudate nucleus and corpus callosum, quite low level in cerebellum. In peripheral

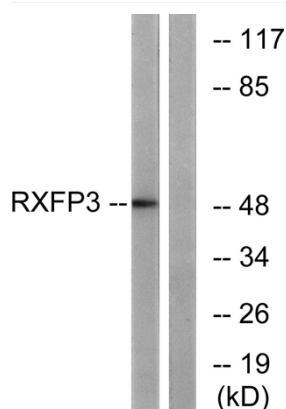
Nanjing BYabscience technology Co.,Ltd



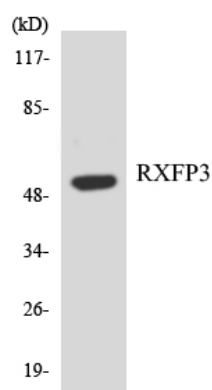
	tissues, relatively high levels in adrenal glands, low levels in pancreas, salivary gland, placenta, mammary gland and testis.,
Background	function:Receptor for relaxin-3. Binding of the ligand inhibit cAMP accumulation.,similarity:Belongs to the G-protein coupled receptor 1 family.,tissue specificity:Expressed predominantly in brain regions. Highest expression in substantia nigra and pituitary, followed by hippocampus, spinal cord, amygdala, caudate nucleus and corpus callosum, quite low level in cerebellum. In peripheral tissues, relatively high levels in adrenal glands, low levels in pancreas, salivary gland, placenta, mammary gland and testis.,
matters needing attention	Avoid repeated freezing and thawing!
Usage suggestions	This product can be used in immunological reaction related experiments. For more information, please consult technical personnel.



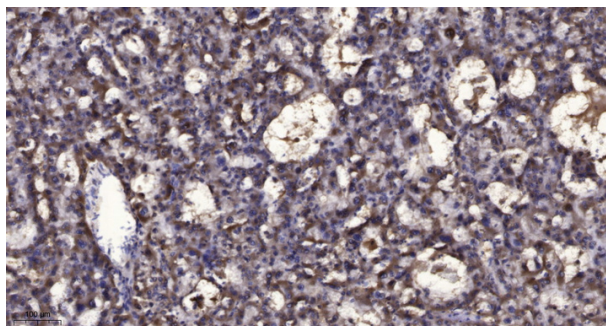
Products Images



Western blot analysis of lysates from K562 cells, using RXFP3 Antibody. The lane on the right is blocked with the synthesized peptide.



Western blot analysis of the lysates from Jurkat cells using RXFP3 antibody.



Immunohistochemical analysis of paraffin-embedded human liver cancer. 1, Antibody was diluted at 1:200(4° overnight). 2, Tris-EDTA,pH9.0 was used for antigen retrieval. 3,Secondary antibody was diluted at 1:200(room temperature, 45min).