



P2RY8 Polyclonal Antibody

Catalog No	BYab-13651
Isotype	IgG
Reactivity	Human;Rat;Mouse;
Applications	WB;IF;ELISA
Gene Name	P2RY8
Protein Name	P2Y purinoceptor 8
Immunogen	The antiserum was produced against synthesized peptide derived from human P2RY8. AA range:192-241
Specificity	P2RY8 Polyclonal Antibody detects endogenous levels of P2RY8 protein.
Formulation	Liquid in PBS containing 50% glycerol, 0.5% BSA and 0.02% sodium azide.
Source	Polyclonal, Rabbit,IgG
Purification	The antibody was affinity-purified from rabbit antiserum by affinity-chromatography using epitope-specific immunogen.
Dilution	Western Blot: 1/500 - 1/2000. Immunofluorescence: 1/200 - 1/1000. ELISA: 1/20000. Not yet tested in other applications.
Concentration	1 mg/ml
Purity	≥90%
Storage Stability	-20°C/1 year
Synonyms	P2RY8; P2Y purinoceptor 8; P2Y8
Observed Band	41kD
Cell Pathway	Cell membrane; Multi-pass membrane protein.
Tissue Specificity	Barely detectable in normal blood leukocytes. Weaker expression was seen in heart, kidney and lung. Not detected in brain.
Function	function:Probable receptor for purines coupled to G-proteins.,induction:Down-regulated during granulocytic regulation.,miscellaneous:The gene encoding for this protein is located in the pseudoautosomal region 1 (PAR1) of X and Y chromosomes.,similarity:Belongs to the G-protein coupled receptor 1 family.,tissue specificity:Barely detectable in normal blood leukocytes. Weaker expression was seen in heart, kidney and lung. Not detected in brain.,
Background	purinergic receptor P2Y8(P2RY8) Homo sapiens The protein encoded by this gene belongs to the family of G-protein coupled receptors, that are preferentially activated by adenosine and uridine nucleotides. This gene is moderately

Nanjing BYabscience technology Co.,Ltd



expressed in undifferentiated HL60 cells, and is located on both chromosomes X and Y. [provided by RefSeq, Jul 2008],

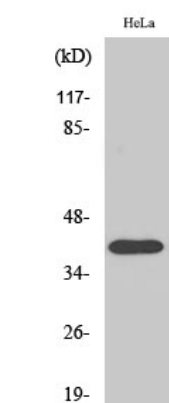
matters needing attention

Avoid repeated freezing and thawing!

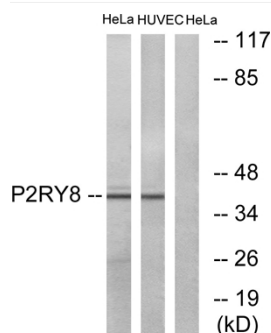
Usage suggestions

This product can be used in immunological reaction related experiments. For more information, please consult technical personnel.

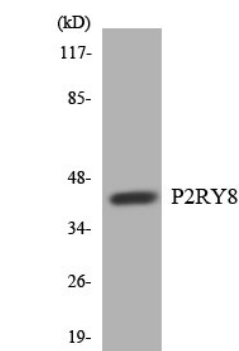
Products Images



Western Blot analysis of various cells using P2RY8 Polyclonal Antibody diluted at 1:2000



Western blot analysis of lysates from HeLa and HUVEC cells, using P2RY8 Antibody. The lane on the right is blocked with the synthesized peptide.



Western blot analysis of the lysates from COLO205 cells using P2RY8 antibody.

Nanjing BYabscience technology Co.,Ltd

网址: www.njbybio.com

官方热线: 025-5229-8998

监督电话: 15950492658