



Nesprin-3 Polyclonal Antibody

Catalog No	BYab-13428
Isotype	IgG
Reactivity	Human;Mouse
Applications	WB;IF;ELISA
Gene Name	SYNE3
Protein Name	Nesprin-3
Immunogen	The antiserum was produced against synthesized peptide derived from human C14orf49. AA range:169-218
Specificity	Nesprin-3 Polyclonal Antibody detects endogenous levels of Nesprin-3 protein.
Formulation	Liquid in PBS containing 50% glycerol, 0.5% BSA and 0.02% sodium azide.
Source	Polyclonal, Rabbit,IgG
Purification	The antibody was affinity-purified from rabbit antiserum by affinity-chromatography using epitope-specific immunogen.
Dilution	Western Blot: 1/500 - 1/2000. Immunofluorescence: 1/200 - 1/1000. ELISA: 1/40000. Not yet tested in other applications.
Concentration	1 mg/ml
Purity	≥90%
Storage Stability	-20°C/1 year
Synonyms	SYNE3; C14orf49; Nesprin-3; Nuclear envelope spectrin repeat protein 3
Observed Band	115kD
Cell Pathway	Nucleus outer membrane ; Single-pass type IV membrane protein . Nucleus envelope . Rough endoplasmic reticulum .
Tissue Specificity	Expressed in aortic endothelial cells (at protein level).
Function	function:Involved in the maintenance of nuclear organization and structural integrity. Probable anchoring protein which theters the nucleus to the cytoskeleton by binding PLEC1/Plectin which can associate with the intermediate filament system.,similarity:Belongs to the nesprin family.,similarity:Contains 1 KASH domain.,similarity:Contains 2 spectrin repeats.,subcellular location:Located at the rough reticulum endoplasmic (RER) in some cells.,subunit:Interacts with actin-binding domain of PLEC1/plectin.,
Background	function:Involved in the maintenance of nuclear organization and structural integrity. Probable anchoring protein which theters the nucleus to the cytoskeleton by binding PLEC1/Plectin which can associate with the intermediate filament

Nanjing BYabscience technology Co.,Ltd



system.,similarity:Belongs to the nesprin family.,similarity:Contains 1 KASH domain.,similarity:Contains 2 spectrin repeats.,subcellular location:Located at the rough reticulum endoplasmic (RER) in some cells.,subunit:Interacts with actin-binding domain of PLEC1/plectin.,

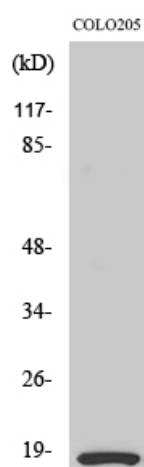
matters needing attention

Avoid repeated freezing and thawing!

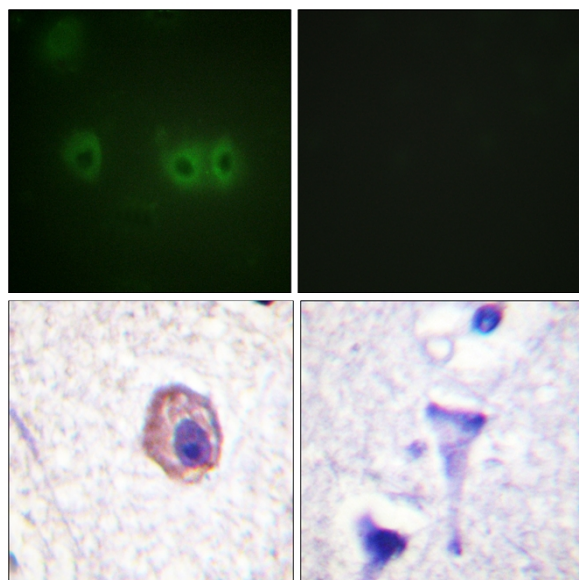
Usage suggestions

This product can be used in immunological reaction related experiments. For more information, please consult technical personnel.

Products Images



Western Blot analysis of Jurkat cells using Nesprin-3 Polyclonal Antibody cells nucleus extracted by Minute TM Cytoplasmic and Nuclear Fractionation kit (SC-003, Invent biotech, MN, USA).



Western blot analysis of lysates from Jurkat cells, using C14orf49 Antibody. The lane on the right is blocked with the synthesized peptide.

Nanjing BYabscience technology Co.,Ltd

网址: www.njbybio.com

官方热线: 025-5229-8998

监督电话: 15950492658