



# MerTK/Tyro3 Polyclonal Antibody

<b>Catalog No</b>	BYab-13415
<b>Isotype</b>	IgG
<b>Reactivity</b>	Human;Mouse;Rat
<b>Applications</b>	WB;IHC;IF;ELISA
<b>Gene Name</b>	MERTK/TYRO3
<b>Protein Name</b>	Tyrosine-protein kinase Mer/Tyrosine-protein kinase receptor TYRO3
<b>Immunogen</b>	The antiserum was produced against synthesized peptide derived from human MER/SKY. AA range:716-765
<b>Specificity</b>	MerTK/Tyro3 Polyclonal Antibody detects endogenous levels of MerTK/Tyro3 protein.
<b>Formulation</b>	Liquid in PBS containing 50% glycerol, 0.5% BSA and 0.02% sodium azide.
<b>Source</b>	Polyclonal, Rabbit,IgG
<b>Purification</b>	The antibody was affinity-purified from rabbit antiserum by affinity-chromatography using epitope-specific immunogen.
<b>Dilution</b>	WB: 1/500 - 1/2000. IHC: 1/100 - 1/300. ELISA: 1/20000.. IF 1:50-200
<b>Concentration</b>	1 mg/ml
<b>Purity</b>	≥90%
<b>Storage Stability</b>	-20°C/1 year
<b>Synonyms</b>	MERTK; MER; Tyrosine-protein kinase Mer; Proto-oncogene c-Mer; Receptor tyrosine kinase MerTK; TYRO3; BYK; DTK; RSE; SKY; Tyrosine-protein kinase receptor TYRO3; Tyrosine-protein kinase DTK; Tyrosine-protein kinase RSE; Tyrosine-protein kin
<b>Observed Band</b>	97kD
<b>Cell Pathway</b>	Cell membrane ; Single-pass type I membrane protein .
<b>Tissue Specificity</b>	Not expressed in normal B- and T-lymphocytes but is expressed in numerous neoplastic B- and T-cell lines. Highly expressed in testis, ovary, prostate, lung, and kidney, with lower expression in spleen, small intestine, colon, and liver.
<b>Function</b>	catalytic activity:ATP + a [protein]-L-tyrosine = ADP + a [protein]-L-tyrosine phosphate.;disease:Defects in MERTK are a cause of retinitis pigmentosa (RP) [MIM:268000]. RP that leads to degeneration of retinal photoreceptor cells. Patients typically have night vision blindness and loss of midperipheral visual field. As their condition progresses, they lose their far peripheral visual field and eventually central vision as well.;function:In case of filovirus infection, seems to

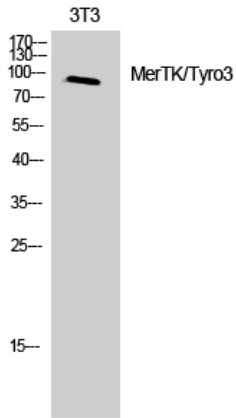
**Nanjing BYabscience technology Co.,Ltd**



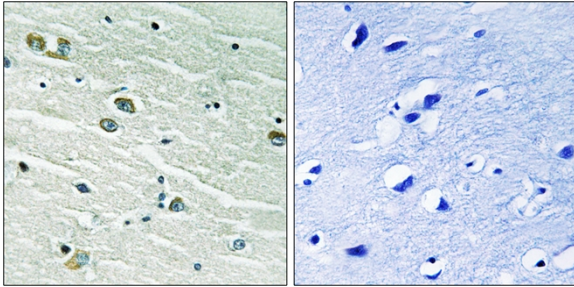
	function as a cell entry factor.,online information:Retina International's Scientific Newsletter,similarity:Belongs to the protein kinase superfamily. Tyr protein kinase family.,similarity:Belongs to the protein kinase superfamily. Tyr protein kinase family. AXL/UFO subfamily.,similarity:Contains 1 protein kinase domain.,similarity:Contains 2 fibronectin type-III domains.,similarity:Contains 2 Ig-like C2-type (imm
<b>Background</b>	This gene is a member of the MER/AXL/TYRO3 receptor kinase family and encodes a transmembrane protein with two fibronectin type-III domains, two Ig-like C2-type (immunoglobulin-like) domains, and one tyrosine kinase domain. Mutations in this gene have been associated with disruption of the retinal pigment epithelium (RPE) phagocytosis pathway and onset of autosomal recessive retinitis pigmentosa (RP). [provided by RefSeq, Jul 2008],
<b>matters needing attention</b>	Avoid repeated freezing and thawing!
<b>Usage suggestions</b>	This product can be used in immunological reaction related experiments. For more information, please consult technical personnel.



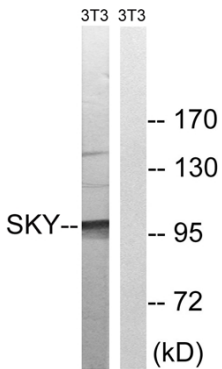
## Products Images



Western Blot analysis of 3T3 cells using MerTK/Tyro3 Polyclonal Antibody



Immunohistochemistry analysis of paraffin-embedded human brain tissue, using MER/SKY Antibody. The picture on the right is blocked with the synthesized peptide.



Western blot analysis of lysates from NIH/3T3 cells, treated with EGF 200ng/ml 5', using MER/SKY Antibody. The lane on the right is blocked with the synthesized peptide.