



Lfc (phospho Ser886) Polyclonal Antibody

Catalog No	BYab-17648
Isotype	IgG
Reactivity	Human;Mouse;Rat
Applications	WB;IHC;IF;ELISA
Gene Name	ARHGEF2
Protein Name	Rho guanine nucleotide exchange factor 2
Immunogen	The antiserum was produced against synthesized peptide derived from human Rho/Rac Guanine Nucleotide Exchange Factor 2 around the phosphorylation site of Ser885. AA range:851-900
Specificity	Phospho-Lfc (S885) Polyclonal Antibody detects endogenous levels of Lfc protein only when phosphorylated at S885.
Formulation	Liquid in PBS containing 50% glycerol, 0.5% BSA and 0.02% sodium azide.
Source	Polyclonal, Rabbit,IgG
Purification	The antibody was affinity-purified from rabbit antiserum by affinity-chromatography using epitope-specific immunogen.
Dilution	WB: 1/500 - 1/2000. IHC: 1/100 - 1/300. ELISA: 1/5000.. IF 1:50-200
Concentration	1 mg/ml
Purity	≥90%
Storage Stability	-20°C/1 year
Synonyms	ARHGEF2; KIAA0651; LFP40; Rho guanine nucleotide exchange factor 2; Guanine nucleotide exchange factor H1; GEF-H1; Microtubule-regulated Rho-GEF; Proliferating cell nucleolar antigen p40
Observed Band	111kD
Cell Pathway	Cytoplasm, cytoskeleton . Cytoplasm . Cell junction, tight junction . Golgi apparatus . Cytoplasm, cytoskeleton, spindle . Cell projection, ruffle membrane . Cytoplasmic vesicle . Localizes to the tips of cortical microtubules of the mitotic spindle during cell division, and is further released upon microtubule depolymerization (PubMed:15827085). Recruited into membrane ruffles induced by S.flexneri at tight junctions of polarized epithelial cells (PubMed:19043560). Colocalized with NOD2 and RIPK2 in vesicles and with the cytoskeleton (PubMed:21887730). .
Tissue Specificity	Brain,Cervix carcinoma,Epithelium,Platelet,

Nanjing BYabs science technology Co.,Ltd

网址: www.njbybio.com

官方热线: 025-5229-8998

监督电话: 15950492658



Function	domain:The DH (DBL-homology) domain interacts with and promotes loading of GTP on RhoA.,domain:The PH (pleckstrin-homology) domain is involved in microtubule binding and targeting to tight junctions.,function:Activates Rho-GTPases by promoting the exchange of GDP for GTP. May be involved in epithelial barrier permeability, cell motility and polarization, dendritic spine morphology, antigen presentation, leukemic cell differentiation, cell cycle regulation, and cancer. Binds Rac-GTPases, but does not seem to promote nucleotide exchange activity toward Rac-GTPases, which was uniquely reported in PubMed:9857026. May stimulate instead the cortical activity of Rac. Inactive toward CDC42, TC10, or Ras-GTPases.,online information:ARHGEF2 entry,PTM:Phosphorylation of Ser-886 by PAK1 induces binding to protein 14-3-3 zeta, promoting its relocation to microtubules and the inhibition of its activit
Background	Rho GTPases play a fundamental role in numerous cellular processes that are initiated by extracellular stimuli that work through G protein coupled receptors. The encoded protein may form complex with G proteins and stimulate rho-dependent signals. Alternatively spliced transcript variants encoding different isoforms have been identified.[provided by RefSeq, Jun 2009],
matters needing attention	Avoid repeated freezing and thawing!
Usage suggestions	This product can be used in immunological reaction related experiments. For more information, please consult technical personnel.

Nanjing BYabscience technology Co.,Ltd

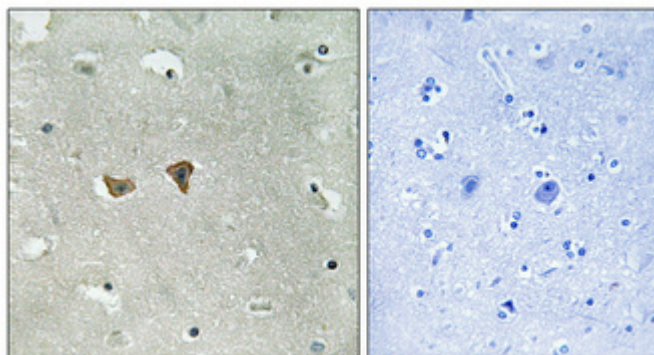
网址: www.njbybio.com

官方热线: 025-5229-8998

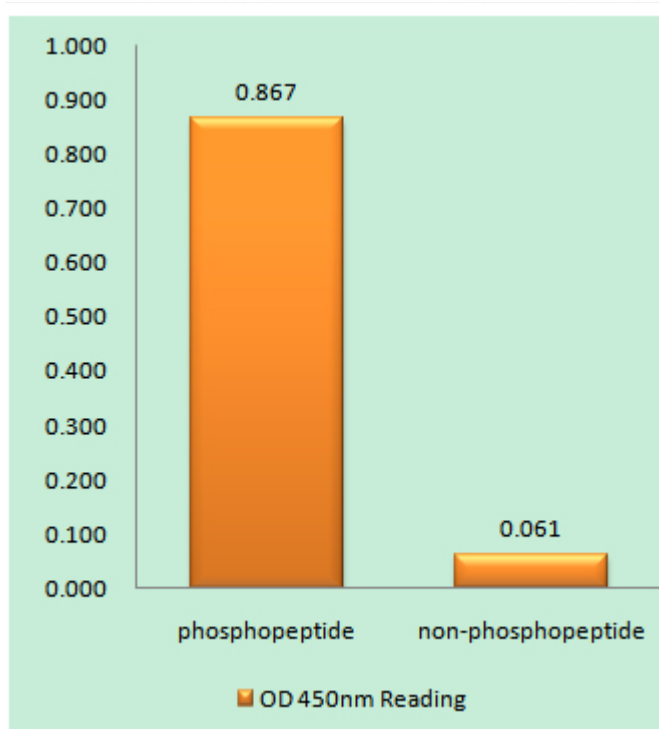
监督电话: 15950492658



Products Images



Immunohistochemical analysis of paraffin-embedded Human brain. Antibody was diluted at 1:100(4° overnight). High-pressure and temperature Tris-EDTA,pH8.0 was used for antigen retrieval. Negative contrl (right) obtained from antibody was pre-absorbed by immunogen peptide.



Enzyme-Linked Immunosorbent Assay (Phospho-ELISA) for Immunogen Phosphopeptide (Phospho-left) and Non-Phosphopeptide (Phospho-right), using Rho/Rac Guanine Nucleotide Exchange Factor 2 (Phospho-Ser885) Antibody

Nanjing BYabscience technology Co.,Ltd

网址: www.njbybio.com

官方热线: 025-5229-8998

监督电话: 15950492658



Rho/Rac nucleotide

Western blot analysis of lysates from HeLa cells treated with TSA 400nM 24H and Jurkat cells treated with forskolin 40nM 30', using Rho/Rac Guanine Nucleotide Exchange Factor 2 (Phospho-Ser885) Antibody. The lane on the right is blocked with the phospho peptide.



Western Blot analysis of 1 A431 treated with LPS, 2 A431, using primary antibody at 1:1000 dilution. Secondary antibody (catalog#:RS23920) was diluted at 1:10000

