



# Tenascin-C Polyclonal Antibody

|                           |  |
|---------------------------|--|
| <b>Catalog No</b>         | BYab-17094   |
| <b>Isotype</b>            | IgG  |
| <b>Reactivity</b>         | Human;Mouse;Rat  |
| <b>Applications</b>       | WB;IHC;IF;ELISA  |
| <b>Gene Name</b>          | TNC  |
| <b>Protein Name</b>       | Tenascin   |
| <b>Immunogen</b>          | The antiserum was produced against synthesized peptide derived from the C-terminal region of human TNC. AA range:2151-2200   |
| <b>Specificity</b>        | Tenascin-C Polyclonal Antibody detects endogenous levels of Tenascin-C protein.  |
| <b>Formulation</b>        | Liquid in PBS containing 50% glycerol, 0.5% BSA and 0.02% sodium azide.  |
| <b>Source</b>             | Polyclonal, Rabbit,IgG   |
| <b>Purification</b>       | The antibody was affinity-purified from rabbit antiserum by affinity-chromatography using epitope-specific immunogen.  |
| <b>Dilution</b>           | WB: 1/500 - 1/2000. IHC-p: 1:100-1:300. ELISA: 1/10000.. IF 1:50-200   |
| <b>Concentration</b>      | 1 mg/ml  |
| <b>Purity</b>             | ≥90%   |
| <b>Storage Stability</b>  | -20°C/1 year   |
| <b>Synonyms</b>           | TNC; HXB; Tenascin; TN; Cytotactin; GMEM; GP 150-225; Glioma-associated-extracellular matrix antigen; Hexabrachion; JI; Myotendinous antigen; Neuronectin; Tenascin-C; TN-C  |
| <b>Observed Band</b>      | 240kD  |
| <b>Cell Pathway</b>       | Secreted, extracellular space, extracellular matrix.   |
| <b>Tissue Specificity</b> | Brain,Fetal brain,Fetal cartilage,Glioblastoma,Human fetal kidney,Liver,Melanoma,Milk,Plasma,  |
| <b>Function</b>           | alternative products:Isoforms are produced in a tissue- and time-specific manner during development,function:Extracellular matrix protein implicated in guidance of migrating neurons as well as axons during development, synaptic plasticity as well as neuronal regeneration. Promotes neurite outgrowth from cortical neurons grown on a monolayer of astrocytes. Ligand for integrins alpha-8/beta-1, alpha-9/beta-1, alpha-V/beta-3 and alpha-V/beta-6.,induction:By TGF-beta.,PTM:N-glycosylated.,similarity:Belongs to the tenascin family.,similarity:Contains 1 fibrinogen C-terminal domain.,similarity:Contains 15 |

**Nanjing BYabscience technology Co.,Ltd**



|                           |  |
|---------------------------|--|
|                           | EGF-like domains.,similarity:Contains 15 fibronectin type-III domains.,subunit:Homohexamer; disulfide-linked. A homotrimer may be formed in the triple coiled-coil region and may be stabilized by disulfide rings at both ends. Two of such half-hexabrachions may be disulfide linked within the ce  |
| Background                | tenascin C(TNC) Homo sapiens This gene encodes an extracellular matrix protein with a spatially and temporally restricted tissue distribution. This protein is homohexameric with disulfide-linked subunits, and contains multiple EGF-like and fibronectin type-III domains. It is implicated in guidance of migrating neurons as well as axons during development, synaptic plasticity, and neuronal regeneration. [provided by RefSeq, Jul 2011], |
| matters needing attention | Avoid repeated freezing and thawing!   |
| Usage suggestions         | This product can be used in immunological reaction related experiments. For more information, please consult technical personnel.  |

Nanjing BYabscience technology Co.,Ltd

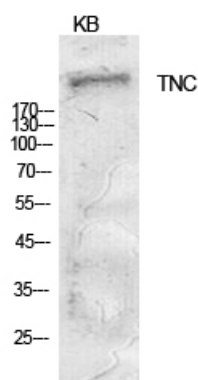
网址: [www.njbybio.com](http://www.njbybio.com)

官方热线: 025-5229-8998

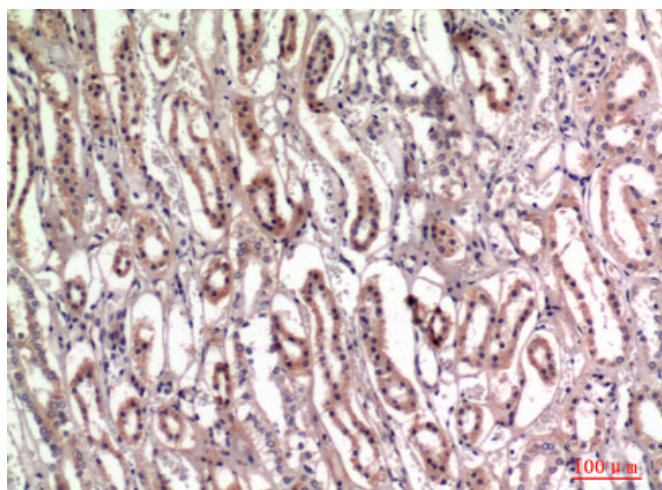
监督电话: 15950492658



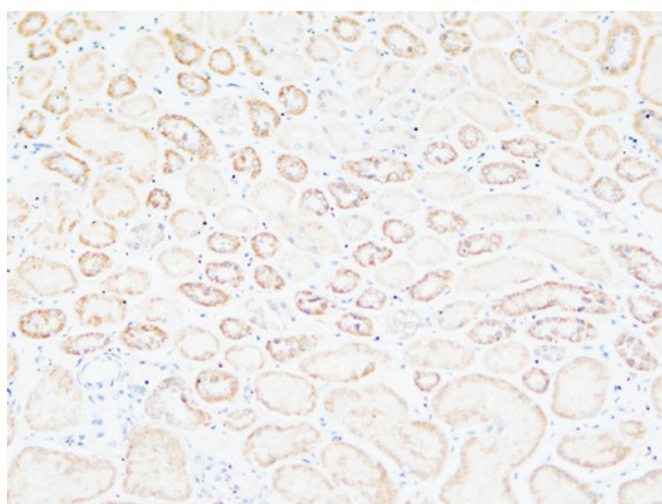
## Products Images



Western Blot analysis of KB cells using Tenascin-C Polyclonal Antibody. Antibody was diluted at 1:1000. Secondary antibody(catalog#:RS0002) was diluted at 1:20000



Immunohistochemical analysis of paraffin-embedded human-kidney, antibody was diluted at 1:100



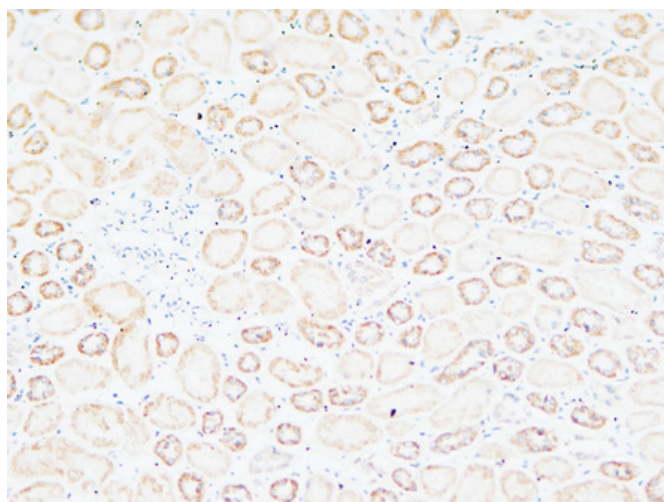
Immunohistochemical analysis of paraffin-embedded Human kidney. 1, Antibody was diluted at 1:200(4° overnight). 2, High-pressure and temperature EDTA, pH8.0 was used for antigen retrieval. 3, Secondary antibody was diluted at 1:200(room temperature, 30min).

**Nanjing BYabs science technology Co.,Ltd**

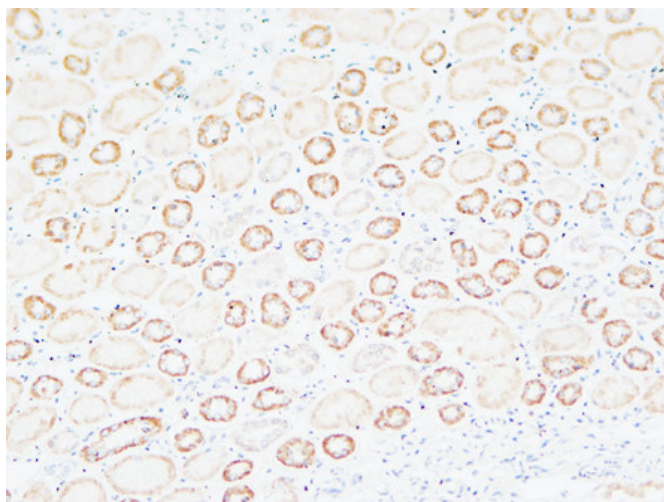
网址: [www.njbybio.com](http://www.njbybio.com)

官方热线: 025-5229-8998

监督电话: 15950492658



Immunohistochemical analysis of paraffin-embedded Human kidney. 1, Antibody was diluted at 1:200(4° overnight). 2, High-pressure and temperature EDTA, pH8.0 was used for antigen retrieval. 3, Secondary antibody was diluted at 1:200(room temperature, 30min).



Immunohistochemical analysis of paraffin-embedded Human kidney. 1, Antibody was diluted at 1:200(4° overnight). 2, High-pressure and temperature EDTA, pH8.0 was used for antigen retrieval. 3, Secondary antibody was diluted at 1:200(room temperature, 30min).