



# L-Selectin Polyclonal Antibody

Catalog No	BYab-17086
Isotype	IgG
Reactivity	Human;Mouse;Rat
Applications	WB;ELISA;IHC
Gene Name	SELL
Protein Name	L-selectin
Immunogen	The antiserum was produced against synthesized peptide derived from the Internal region of human SELL. AA range:91-140
Specificity	L-Selectin Polyclonal Antibody detects endogenous levels of L-Selectin protein.
Formulation	Liquid in PBS containing 50% glycerol, 0.5% BSA and 0.02% sodium azide.
Source	Polyclonal, Rabbit,IgG
Purification	The antibody was affinity-purified from rabbit antiserum by affinity-chromatography using epitope-specific immunogen.
Dilution	WB 1:500-2000;IHC-p 1:50-300; ELISA 2000-20000
Concentration	1 mg/ml
Purity	≥90%
Storage Stability	-20°C/1 year
Synonyms	SELL; LNHR; LYAM1; L-selectin; CD62 antigen-like family member L; Leukocyte adhesion molecule 1; LAM-1; Leukocyte surface antigen Leu-8; Leukocyte-endothelial cell adhesion molecule 1; LECAM1; Lymph node homing receptor; TQ1; gp90-MEL; CD62L
Observed Band	42kD
Cell Pathway	Cell membrane ; Single-pass type I membrane protein .
Tissue Specificity	Expressed in B-cell lines and T-lymphocytes.
Function	function:Cell surface adhesion protein. Mediates the adherence of lymphocytes to endothelial cells of high endothelial venules in peripheral lymph nodes. Promotes initial tethering and rolling of leukocytes in endothelia.,online information:L-selectin,similarity:Belongs to the selectin/LECAM family.,similarity:Contains 1 C-type lectin domain.,similarity:Contains 1 EGF-like domain.,similarity:Contains 2 Sushi (CCP/SCR) domains.,subunit:Interaction with PSGL1/SELPLG is required for promoting recruitment and rolling of leukocytes.

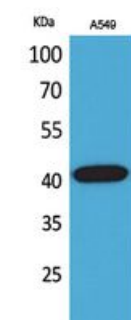
Nanjing BYabscience technology Co.,Ltd



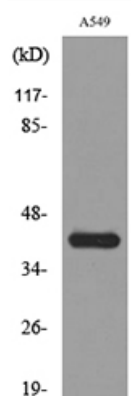
	<p>This interaction is dependent on the sialyl Lewis X glycan and tyrosine sulfation modifications of PSGL1. Sulfation on Y-51 of PSGL1 is important for L-selectin binding.,tissue specificity:Expressed in B cell lines and T lymphocytes.,</p>
<b>Background</b>	<p>This gene encodes a cell surface adhesion molecule that belongs to a family of adhesion/homing receptors. The encoded protein contains a C-type lectin-like domain, a calcium-binding epidermal growth factor-like domain, and two short complement-like repeats. The gene product is required for binding and subsequent rolling of leucocytes on endothelial cells, facilitating their migration into secondary lymphoid organs and inflammation sites. Single-nucleotide polymorphisms in this gene have been associated with various diseases including immunoglobulin A nephropathy. Alternatively spliced transcript variants have been found for this gene. [provided by RefSeq, Oct 2009],</p>
<b>matters needing attention</b>	<p>Avoid repeated freezing and thawing!</p>
<b>Usage suggestions</b>	<p>This product can be used in immunological reaction related experiments. For more information, please consult technical personnel.</p>



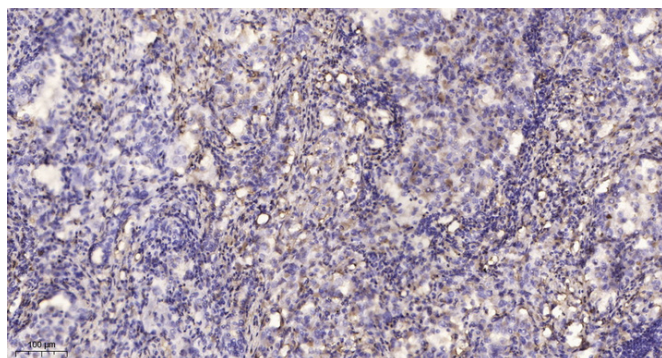
## Products Images



Western Blot analysis of A549 cells using L-Selectin Polyclonal Antibody. Secondary antibody(catalog#:RS0002) was diluted at 1:20000



Western blot analysis of lysate from A549 cells, using SELL Antibody.



Immunohistochemical analysis of paraffin-embedded human lung cancer. 1, Antibody was diluted at 1:200(4° overnight). 2, Tris-EDTA,pH9.0 was used for antigen retrieval. 3,Secondary antibody was diluted at 1:200(room temperature, 45min).