



Neurotrimin Polyclonal Antibody

Catalog No	BYab-17058
Isotype	IgG
Reactivity	Human;Rat;Mouse;
Applications	WB;IHC;IF;ELISA
Gene Name	NTM
Protein Name	Neurotrimin
Immunogen	The antiserum was produced against synthesized peptide derived from human NT. AA range:235-284
Specificity	Neurotrimin Polyclonal Antibody detects endogenous levels of Neurotrimin protein.
Formulation	Liquid in PBS containing 50% glycerol, 0.5% BSA and 0.02% sodium azide.
Source	Polyclonal, Rabbit,IgG
Purification	The antibody was affinity-purified from rabbit antiserum by affinity-chromatography using epitope-specific immunogen.
Dilution	WB: 1/500 - 1/2000. IHC: 1/100 - 1/300. ELISA: 1/20000.. IF 1:50-200
Concentration	1 mg/ml
Purity	≥90%
Storage Stability	-20°C/1 year
Synonyms	NTM; IGLON2; NT; Neurotrimin; hNT; IgLON family member 2
Observed Band	42kD
Cell Pathway	Cell membrane; Lipid-anchor, GPI-anchor.
Tissue Specificity	Skin,
Function	function:Neural cell adhesion molecule.,similarity:Belongs to the immunoglobulin superfamily. IgLON family.,similarity:Contains 3 Ig-like C2-type (immunoglobulin-like) domains.,
Background	This gene encodes a member of the IgLON (LAMP, OBCAM, Ntm) family of immunoglobulin (Ig) domain-containing glycosylphosphatidylinositol (GPI)-anchored cell adhesion molecules. The encoded protein may promote neurite outgrowth and adhesion via a homophilic mechanism. This gene is closely linked to a related family member, opioid binding protein/cell adhesion molecule-like (OPCML), on chromosome 11. Multiple transcript variants encoding different isoforms have been found for this gene. [provided by RefSeq, Jan 2009],

Nanjing BYabscience technology Co.,Ltd



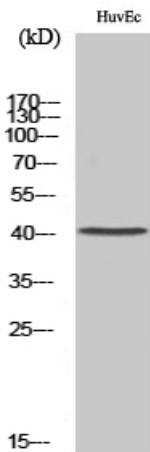
matters needing attention

Avoid repeated freezing and thawing!

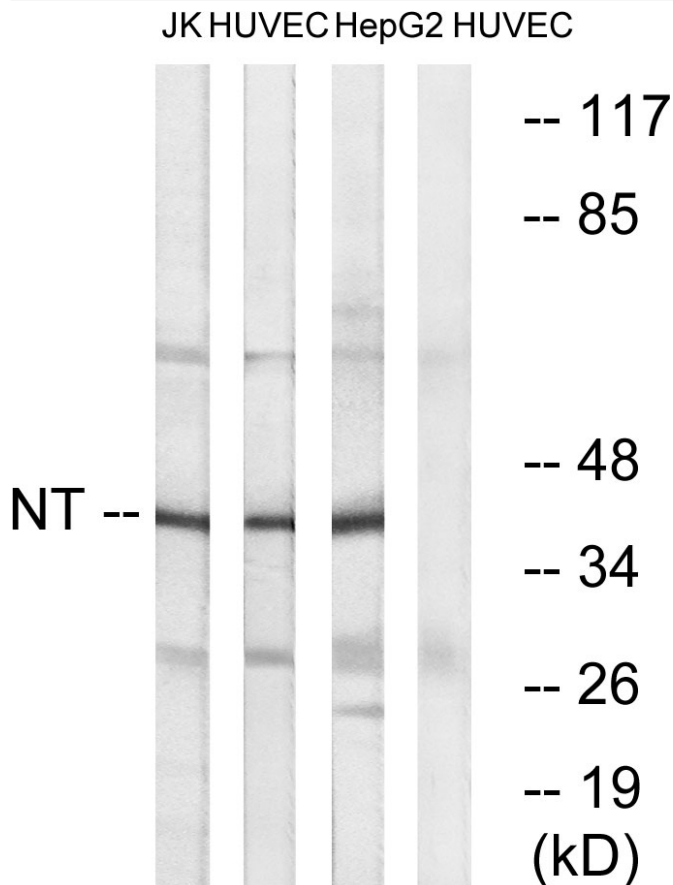
Usage suggestions

This product can be used in immunological reaction related experiments. For more information, please consult technical personnel.

Products Images

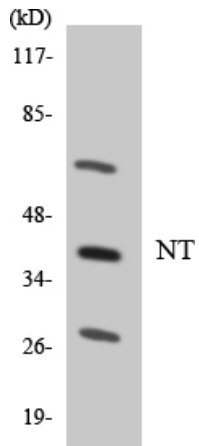


Western Blot analysis of various cells using Neurotrimin Polyclonal Antibody



Western blot analysis of lysates from HUVEC, HepG2, and Jurkat cells, using NT Antibody. The lane on the right is blocked with the synthesized peptide.

Nanjing BYabs science technology Co.,Ltd



Western blot analysis of the lysates from HepG2 cells using NT antibody.