



# KALIG-1 Polyclonal Antibody

Catalog No	BYab-17036
Isotype	IgG
Reactivity	Human;Rat;Mouse;
Applications	WB;IHC
Gene Name	KAL1
Protein Name	Anosmin-1
Immunogen	The antiserum was produced against synthesized peptide derived from human KAL1. AA range:151-200
Specificity	KALIG-1 Polyclonal Antibody detects endogenous levels of KALIG-1 protein.
Formulation	Liquid in PBS containing 50% glycerol, 0.5% BSA and 0.02% sodium azide.
Source	Polyclonal, Rabbit,IgG
Purification	The antibody was affinity-purified from rabbit antiserum by affinity-chromatography using epitope-specific immunogen.
Dilution	WB 1:500-2000;IHC-p 1:50-300
Concentration	1 mg/ml
Purity	≥90%
Storage Stability	-20°C/1 year
Synonyms	KAL1; ADMLX; KAL; KALIG1; Anosmin-1; Adhesion molecule-like X-linked; Kallmann syndrome protein
Observed Band	76kD
Cell Pathway	Cell membrane ; Peripheral membrane protein . Secreted . Proteolytic cleavage may release it from the cell surface into the extracellular space.
Tissue Specificity	Expressed in the cerebellum (at protein level).
Function	disease:Defects in KAL1 are the cause of Kallmann syndrome type 1 (KAL1) [MIM:308700]; also known as hypogonadotropic hypogonadism and anosmia. Anosmia or hyposmia is related to the absence or hypoplasia of the olfactory bulbs and tracts. Hypogonadism is due to deficiency in gonadotropin-releasing hormone and probably results from a failure of embryonic migration of gonadotropin-releasing hormone-synthesizing neurons. In some patients other developmental anomalies can be present, which include renal agenesis, cleft lip and/or palate, selective tooth agenesis, and bimanual synkinesis. In some cases anosmia may be absent or inconspicuous.,function:May be an adhesion-like molecule with anti-protease activity.,PTM:N-glycosylated.,similarity:Contains 1

Nanjing BYabscience technology Co.,Ltd



WAP domain.,similarity:Contains 4 fibronectin type-III domains.,

<b>Background</b>	Mutations in this gene cause the X-linked Kallmann syndrome. The encoded protein is similar in sequence to proteins known to function in neural cell adhesion and axonal migration. In addition, this cell surface protein is N-glycosylated and may have anti-protease activity. [provided by RefSeq, Jul 2008],
<b>matters needing attention</b>	Avoid repeated freezing and thawing!
<b>Usage suggestions</b>	This product can be used in immunological reaction related experiments. For more information, please consult technical personnel.

Nanjing BYabscience technology Co.,Ltd

网址: [www.njbybio.com](http://www.njbybio.com)

官方热线: 025-5229-8998

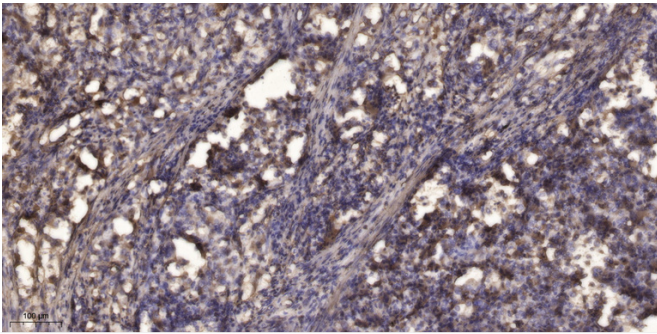
监督电话: 15950492658



## Products Images



Western Blot analysis of various cells using KALIG-1 Polyclonal Antibody



Immunohistochemical analysis of paraffin-embedded human Squamous cell carcinoma of lung. 1, Antibody was diluted at 1:200(4° overnight). 2, Tris-EDTA,pH9.0 was used for antigen retrieval. 3,Secondary antibody was diluted at 1:200(room temperature, 45min).

Nanjing BYabs science technology Co.,Ltd

网址: [www.njbybio.com](http://www.njbybio.com)

官方热线: 025-5229-8998

监督电话: 15950492658