



# Connexin-45 Polyclonal Antibody

<b>Catalog No</b>	BYab-17009
<b>Isotype</b>	IgG
<b>Reactivity</b>	Human;Mouse;Rat
<b>Applications</b>	WB;IHC;IF;ELISA
<b>Gene Name</b>	GJC1
<b>Protein Name</b>	Gap junction gamma-1 protein
<b>Immunogen</b>	The antiserum was produced against synthesized peptide derived from human Connexin-45. AA range:312-361
<b>Specificity</b>	Connexin-45 Polyclonal Antibody detects endogenous levels of Connexin-45 protein.
<b>Formulation</b>	Liquid in PBS containing 50% glycerol, 0.5% BSA and 0.02% sodium azide.
<b>Source</b>	Polyclonal, Rabbit,IgG
<b>Purification</b>	The antibody was affinity-purified from rabbit antiserum by affinity-chromatography using epitope-specific immunogen.
<b>Dilution</b>	WB: 1/500 - 1/2000. IHC: 1/100 - 1/300. ELISA: 1/40000.. IF 1:50-200
<b>Concentration</b>	1 mg/ml
<b>Purity</b>	≥90%
<b>Storage Stability</b>	-20°C/1 year
<b>Synonyms</b>	GJC1; GJA7; Gap junction gamma-1 protein; Connexin-45; Cx45; Gap junction alpha-7 protein
<b>Observed Band</b>	45kD
<b>Cell Pathway</b>	Cell membrane; Multi-pass membrane protein. Cell junction, gap junction.
<b>Tissue Specificity</b>	Testis,Uterus,
<b>Function</b>	function:One gap junction consists of a cluster of closely packed pairs of transmembrane channels, the connexons, through which materials of low MW diffuse from one cell to a neighboring cell.,similarity:Belongs to the connexin family. Gamma-type subfamily.,subunit:A connexon is composed of a hexamer of connexins.,
<b>Background</b>	This gene is a member of the connexin gene family. The encoded protein is a component of gap junctions, which are composed of arrays of intercellular channels that provide a route for the diffusion of low molecular weight materials from cell to cell. Alternatively spliced transcript variants encoding the same

**Nanjing BYabscience technology Co.,Ltd**



isoform have been described. [provided by RefSeq, Jul 2008],

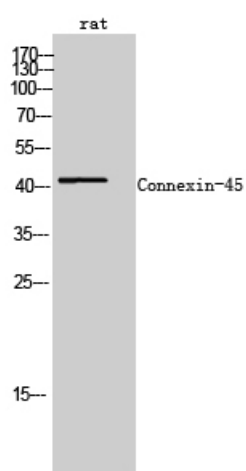
**matters needing attention**

Avoid repeated freezing and thawing!

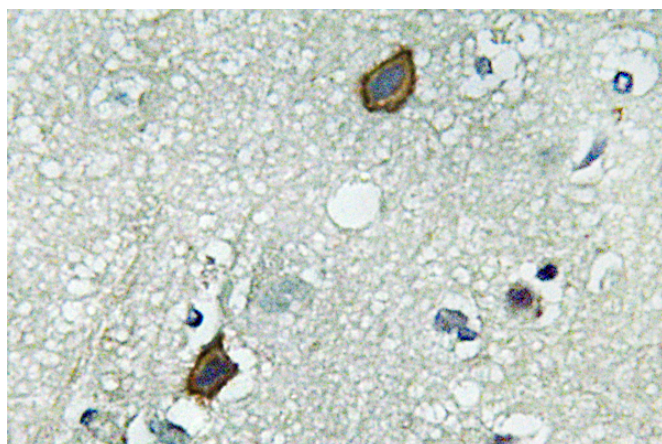
**Usage suggestions**

This product can be used in immunological reaction related experiments. For more information, please consult technical personnel.

## Products Images



Western Blot analysis of rat cells using Connexin-45 Polyclonal Antibody



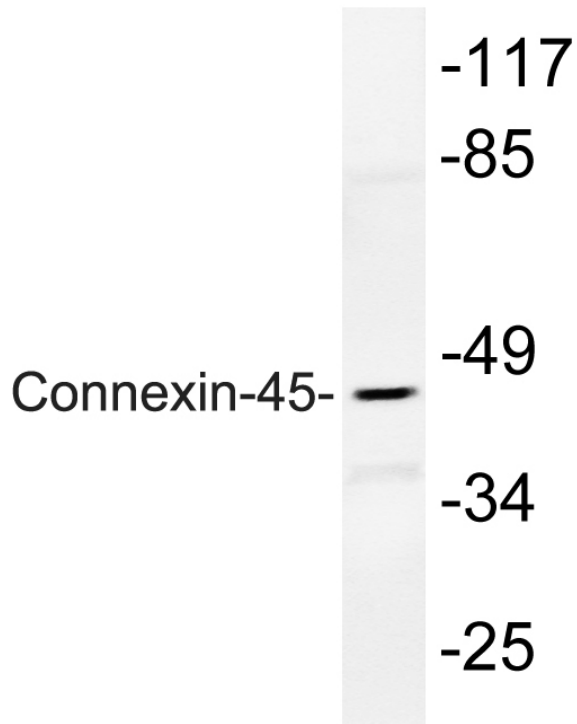
Immunohistochemistry analysis of Connexin-45 antibody in paraffin-embedded human brain tissue.

**Nanjing BYabscience technology Co.,Ltd**

网址: [www.njbybio.com](http://www.njbybio.com)

官方热线: 025-5229-8998

监督电话: 15950492658



Western blot analysis of lysate from rat heart, using Connexin-45 antibody.