



Connexin 45 Polyclonal Antibody

Catalog No	BYab-17004
Isotype	IgG
Reactivity	Human;Mouse;Rat
Applications	WB;ELISA
Gene Name	GJC1
Protein Name	Gap junction gamma-1 protein
Immunogen	The antiserum was produced against synthesized peptide derived from human GJC1. AA range:231-280
Specificity	Connexin 45 Polyclonal Antibody detects endogenous levels of Connexin 45 protein.
Formulation	Liquid in PBS containing 50% glycerol, 0.5% BSA and 0.02% sodium azide.
Source	Polyclonal, Rabbit,IgG
Purification	The antibody was affinity-purified from rabbit antiserum by affinity-chromatography using epitope-specific immunogen.
Dilution	Western Blot: 1/500 - 1/2000. ELISA: 1/40000. Not yet tested in other applications.
Concentration	1 mg/ml
Purity	≥90%
Storage Stability	-20°C/1 year
Synonyms	GJC1; GJA7; Gap junction gamma-1 protein; Connexin-45; Cx45; Gap junction alpha-7 protein
Observed Band	45kD
Cell Pathway	Cell membrane; Multi-pass membrane protein. Cell junction, gap junction.
Tissue Specificity	Testis,Uterus,
Function	function:One gap junction consists of a cluster of closely packed pairs of transmembrane channels, the connexons, through which materials of low MW diffuse from one cell to a neighboring cell.,similarity:Belongs to the connexin family. Gamma-type subfamily.,subunit:A connexon is composed of a hexamer of connexins.,
Background	This gene is a member of the connexin gene family. The encoded protein is a component of gap junctions, which are composed of arrays of intercellular channels that provide a route for the diffusion of low molecular weight materials from cell to cell. Alternatively spliced transcript variants encoding the same

Nanjing BYabscience technology Co.,Ltd



isoform have been described. [provided by RefSeq, Jul 2008],

matters needing attention

Avoid repeated freezing and thawing!

Usage suggestions

This product can be used in immunological reaction related experiments. For more information, please consult technical personnel.

Nanjing BYabscience technology Co.,Ltd

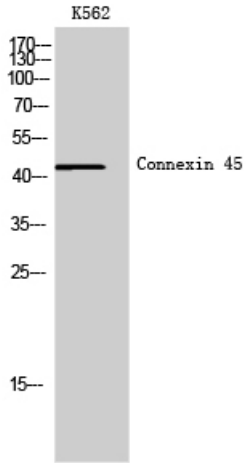
网址: www.njbybio.com

官方热线: 025-5229-8998

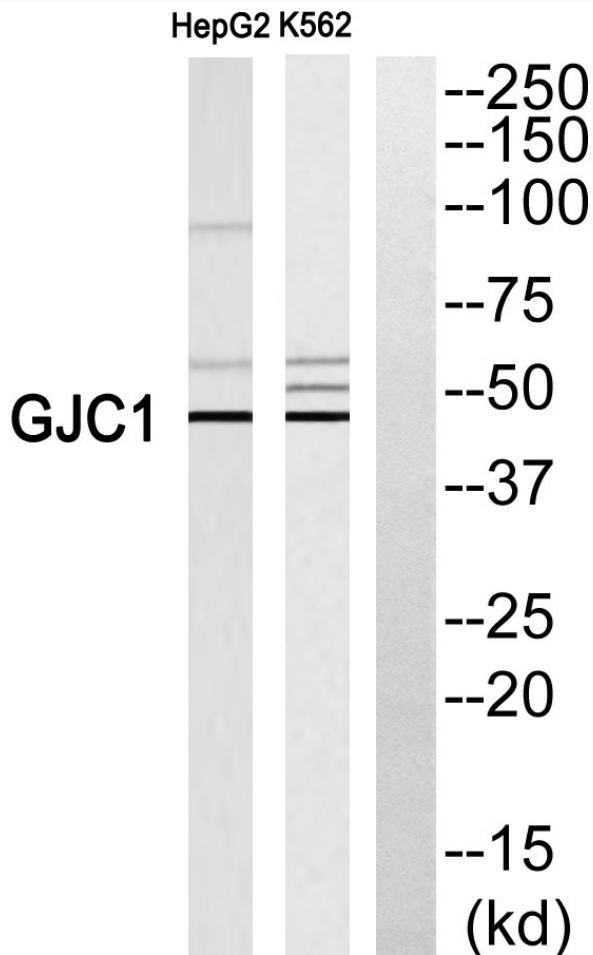
监督电话: 15950492658



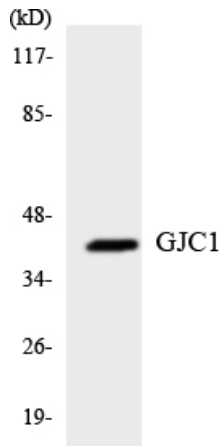
Products Images



Western Blot analysis of K562 cells using Connexin 45 Polyclonal Antibody



Western blot analysis of GJC1 Antibody. The lane on the right is blocked with the GJC1 peptide.



Western blot analysis of the lysates from K562 cells using GJC1 antibody.