



COL9A3 Polyclonal Antibody

Catalog No	BYab-16998
Isotype	IgG
Reactivity	Human;Rat;Mouse;
Applications	IHC;IF;ELISA
Gene Name	COL9A3
Protein Name	Collagen alpha-3(IX) chain
Immunogen	The antiserum was produced against synthesized peptide derived from human Collagen IX alpha3. AA range:321-370
Specificity	COL9A3 Polyclonal Antibody detects endogenous levels of COL9A3 protein.
Formulation	Liquid in PBS containing 50% glycerol, 0.5% BSA and 0.02% sodium azide.
Source	Polyclonal, Rabbit,IgG
Purification	The antibody was affinity-purified from rabbit antiserum by affinity-chromatography using epitope-specific immunogen.
Dilution	Immunohistochemistry: 1/100 - 1/300. Immunofluorescence: 1/200 - 1/1000. ELISA: 1/10000. Not yet tested in other applications.
Concentration	1 mg/ml
Purity	≥90%
Storage Stability	-20°C/1 year
Synonyms	COL9A3; Collagen alpha-3(IX) chain
Observed Band	
Cell Pathway	Secreted, extracellular space, extracellular matrix .
Tissue Specificity	Cartilage,Pancreas,Placenta,Skin,
Function	disease:Defects in COL9A3 are the cause of multiple epiphyseal dysplasia type 3 (EDM3) [MIM:600969]; also known as multiple epiphyseal dysplasia with myopathy. EDM is a generalized skeletal dysplasia associated with significant morbidity. Joint pain, joint deformity, waddling gait, and short stature are the main clinical signs and symptoms. EDM is broadly categorized into the more severe Fairbank and the milder Ribbing types.,function:Structural component of hyaline cartilage and vitreous of the eye.,PTM:Covalently linked to the telopeptides of type II collagen by lysine-derived cross-links.,PTM:Prolines at the third position of the tripeptide repeating unit (G-X-Y) are hydroxylated in some or all of the chains.,similarity:Belongs to the fibril-associated collagens with interrupted helices (FACIT) family.,subunit:Heterotrimer of an alpha 1(IX), an alpha 2(IX) and

Nanjing BYabscience technology Co.,Ltd



an alpha 3(IX) chain.,

Background

This gene encodes one of the three alpha chains of type IX collagen, the major collagen component of hyaline cartilage. Type IX collagen, a heterotrimeric molecule, is usually found in tissues containing type II collagen, a fibrillar collagen. Mutations in this gene are associated with multiple epiphyseal dysplasia type 3. [provided by RefSeq, Jan 2010],

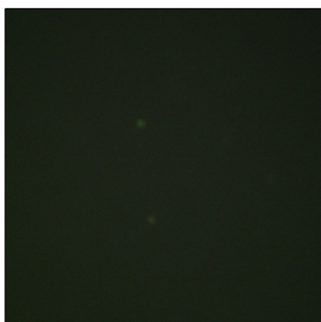
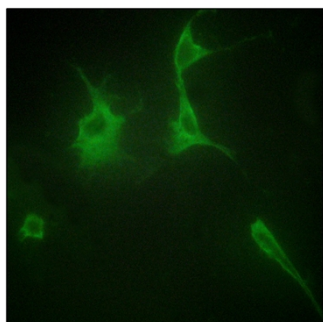
matters needing attention

Avoid repeated freezing and thawing!

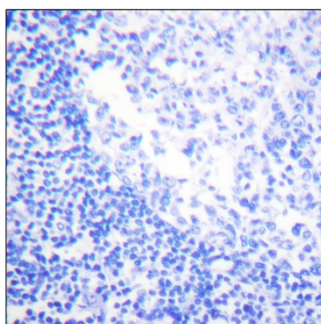
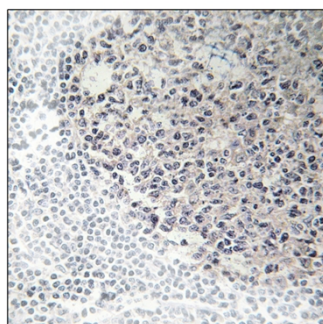
Usage suggestions

This product can be used in immunological reaction related experiments. For more information, please consult technical personnel.

Products Images



Immunofluorescence analysis of NIH/3T3 cells, using Collagen IX alpha3 Antibody. The picture on the right is blocked with the synthesized peptide.



Immunohistochemistry analysis of paraffin-embedded human tonsil tissue, using Collagen IX alpha3 Antibody. The picture on the right is blocked with the synthesized peptide.

Nanjing BYabscience technology Co.,Ltd

网址: www.njbybio.com

官方热线: 025-5229-8998

监督电话: 15950492658