



COL4A2 Polyclonal Antibody

Catalog No	BYab-16984
Isotype	IgG
Reactivity	Human;Mouse
Applications	WB;IHC;IF;ELISA
Gene Name	COL4A2
Protein Name	Collagen alpha-2(IV) chain
Immunogen	The antiserum was produced against synthesized peptide derived from human Collagen IV alpha2. AA range:151-200
Specificity	COL4A2 Polyclonal Antibody detects endogenous levels of COL4A2 protein.
Formulation	Liquid in PBS containing 50% glycerol, 0.5% BSA and 0.02% sodium azide.
Source	Polyclonal, Rabbit,IgG
Purification	The antibody was affinity-purified from rabbit antiserum by affinity-chromatography using epitope-specific immunogen.
Dilution	Western Blot: 1/500 - 1/2000. Immunohistochemistry: 1/100 - 1/300. Immunofluorescence: 1/200 - 1/1000. ELISA: 1/20000. Not yet tested in other applications.
Concentration	1 mg/ml
Purity	≥90%
Storage Stability	-20°C/1 year
Synonyms	COL4A2; Collagen alpha-2(IV) chain
Observed Band	150kD
Cell Pathway	Secreted, extracellular space, extracellular matrix, basement membrane.
Tissue Specificity	Eye,Hepatocyte,Placenta,Skin,
Function	domain:Alpha chains of type IV collagen have a non-collagenous domain (NC1) at their C-terminus, frequent interruptions of the G-X-Y repeats in the long central triple-helical domain (which may cause flexibility in the triple helix), and a short N-terminal triple-helical 7S domain.,function:Type IV collagen is the major structural component of glomerular basement membranes (GBM), forming a 'chicken-wire' meshwork together with laminins, proteoglycans and entactin/nidogen. Potently inhibits angiogenesis and tumor growth.,PTM:Prolines at the third position of the tripeptide repeating unit (G-X-Y) are hydroxylated in some or all of the chains.,PTM:The trimeric structure of the NC1 domains may be stabilized by covalent bonds between Lys and Met residues.,PTM:Type IV

Nanjing BYabs science technology Co.,Ltd



collagens contain numerous cysteine residues which are involved in inter- and intramolecular disulfide bonding. 12 of these, lo

Background

This gene encodes one of the six subunits of type IV collagen, the major structural component of basement membranes. The C-terminal portion of the protein, known as canstatin, is an inhibitor of angiogenesis and tumor growth. Like the other members of the type IV collagen gene family, this gene is organized in a head-to-head conformation with another type IV collagen gene so that each gene pair shares a common promoter. [provided by RefSeq, Jul 2008],

matters needing attention

Avoid repeated freezing and thawing!

Usage suggestions

This product can be used in immunological reaction related experiments. For more information, please consult technical personnel.

Nanjing BYabscience technology Co.,Ltd

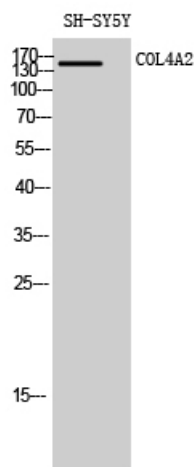
网址: www.njbybio.com

官方热线: 025-5229-8998

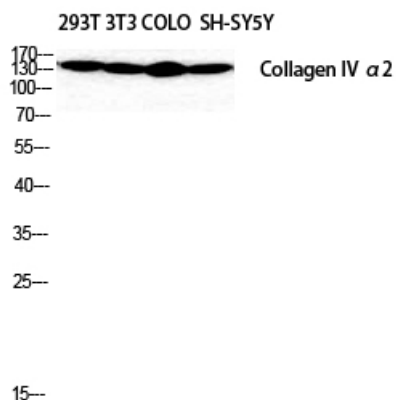
监督电话: 15950492658



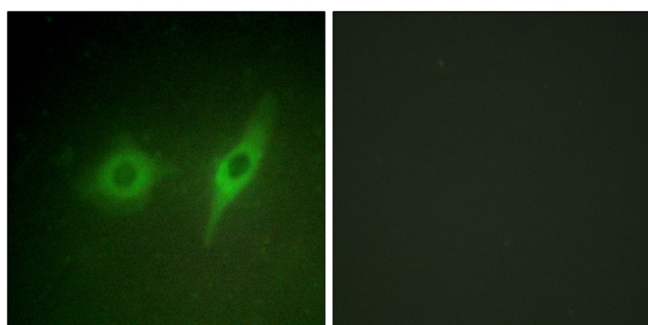
Products Images



Western Blot analysis of SH-SY5Y cells using COL4A2 Polyclonal Antibody diluted at 1:2000



Western Blot analysis of SH-SY5Y 293T NIH-3T3 COLO cells using COL4A2 Polyclonal Antibody diluted at 1:2000



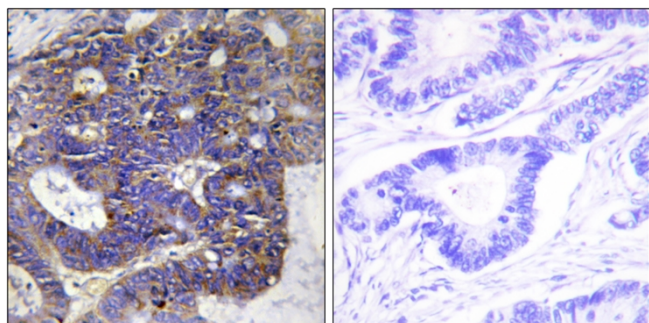
Immunofluorescence analysis of HeLa cells, using Collagen IV alpha2 Antibody. The picture on the right is blocked with the synthesized peptide.

Nanjing BYabs science technology Co.,Ltd

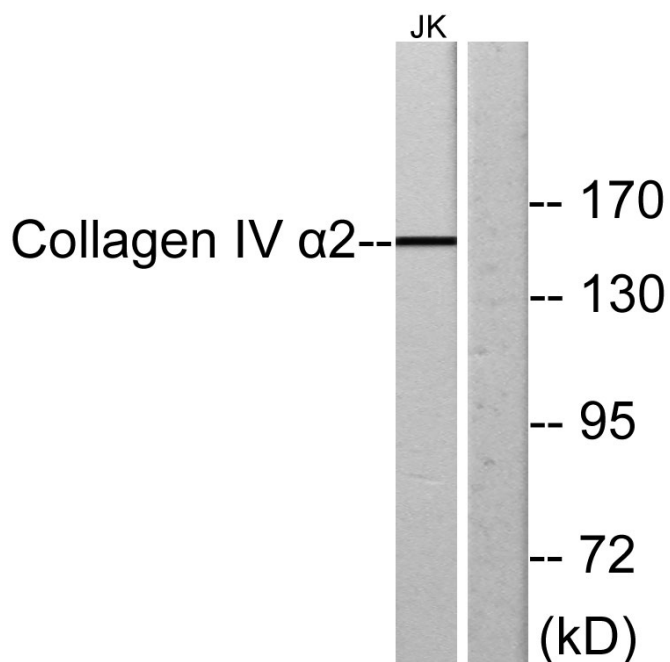
网址: www.njbybio.com

官方热线: 025-5229-8998

监督电话: 15950492658



Immunohistochemistry analysis of paraffin-embedded human colon carcinoma tissue, using Collagen IV alpha2 Antibody. The picture on the right is blocked with the synthesized peptide.



Western blot analysis of lysates from Jurkat cells, using Collagen IV alpha2 Antibody. The lane on the right is blocked with the synthesized peptide.